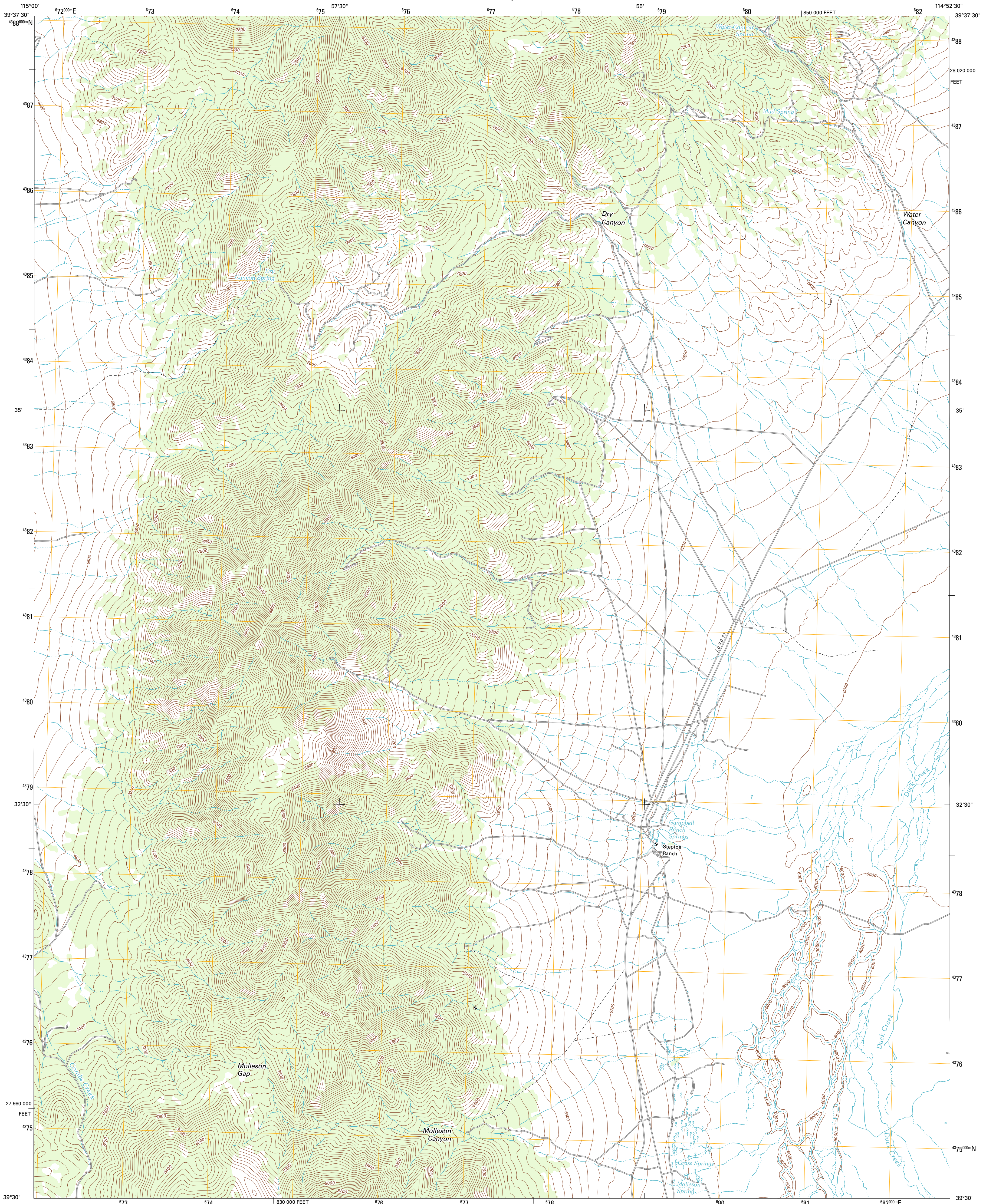




U.S. DEPARTMENT OF THE INTERIOR
U. S. GEOLOGICAL SURVEY

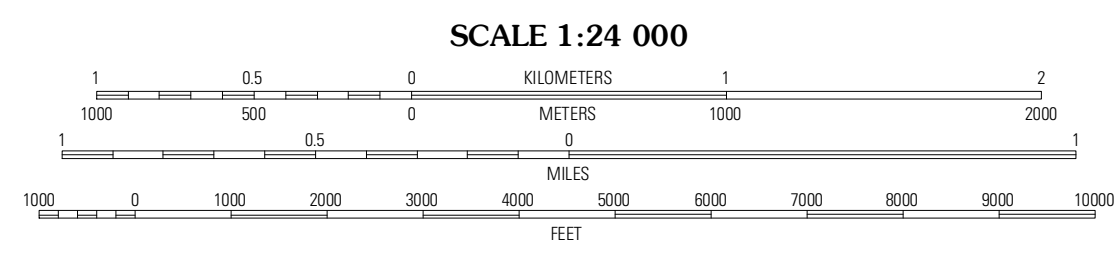
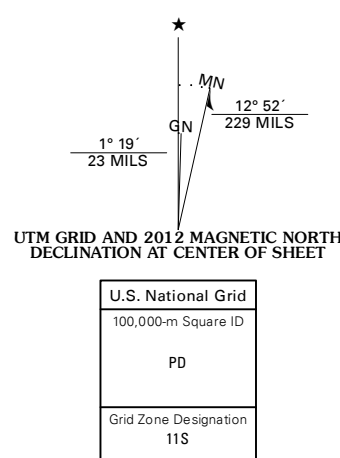


STEPTOE RANCH QUADRANGLE
NEVADA-WHITE PINE CO.
7.5-MINUTE SERIES



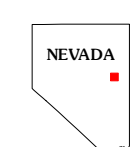
Produced by the United States Geological Survey
North American Datum of 1983 (NAD83)
World Geodetic System of 1984 (WGS84). Projection and
1 000-meter grid: Universal Transverse Mercator, Zone 11 S
10 000-foot ticks: Nevada Coordinate System of 1983 (east zone)

Imagery.....N.A.P., June 2010 - July 2010
Roads.....©2006-2011 TomTom
Names.....G.N.S., 2011
Hydrography.....National Hydrography Dataset, 2010
Contours.....National Elevation Dataset, 2004
Boundaries.....Census, IBWC, IBC, USGS, 1972 - 2010



CONTOUR INTERVAL 40 FEET
NORTH AMERICAN VERTICAL DATUM OF 1988

This map was produced to conform with the National Geospatial Program US Topo Product Standard, 2011. A metadata file associated with this product is draft version 0.6.1



ROAD CLASSIFICATION

Interstate Route
US Route
Ramp
State Road
Local Road
4WD

QUADRANGLE LOCATION

Hunter Point	Telegraph Peak	Monte Neva Hot Springs
Combs Creek	Steptoe Ranch	Steptoe
Robinson Summit	Lanetti Canyon	McGill

STEPTOE RANCH, NV
2012

ADJOINING 7.5' QUADRANGLES