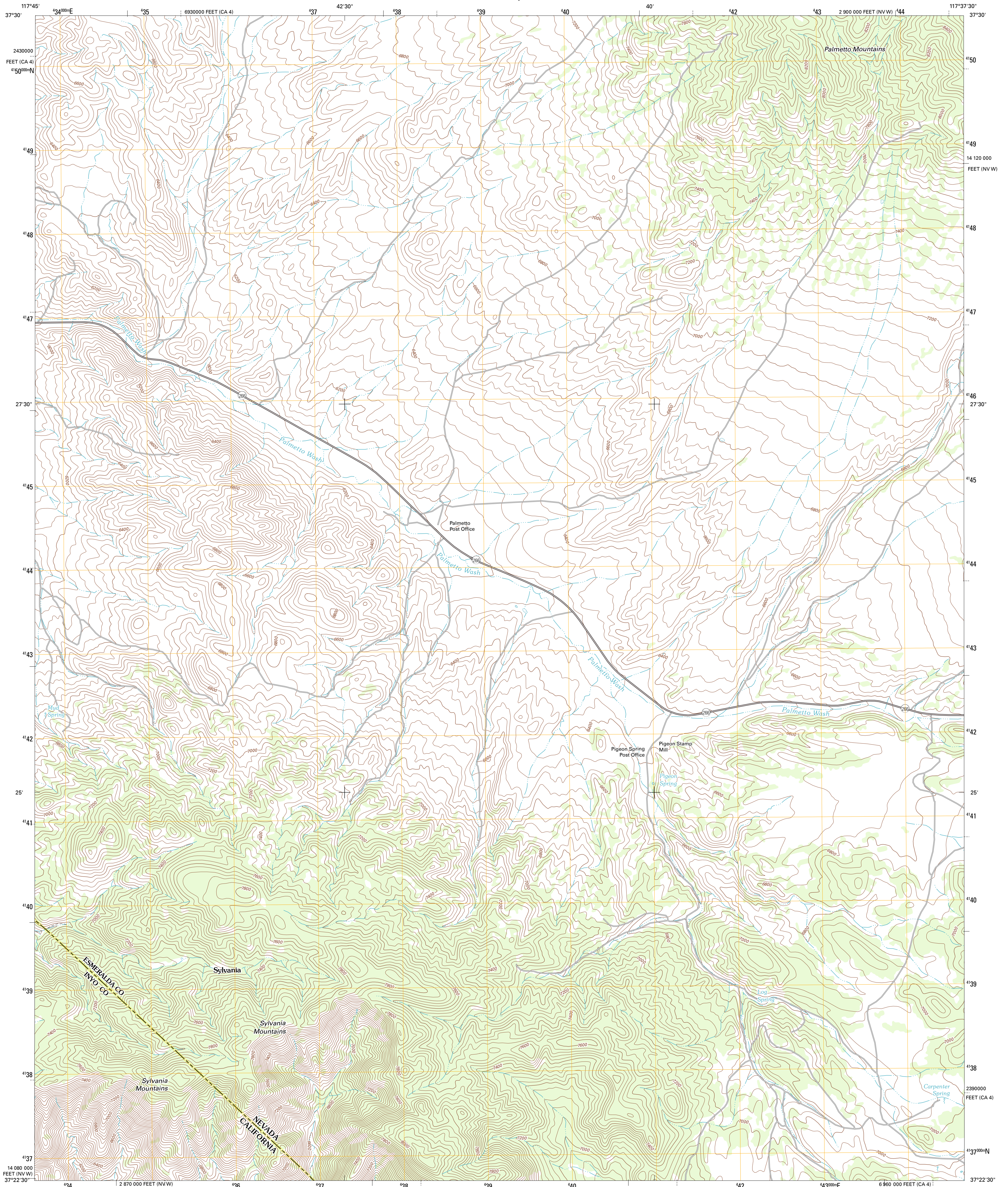




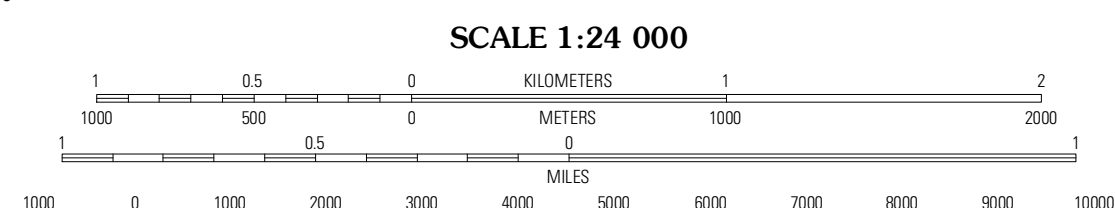
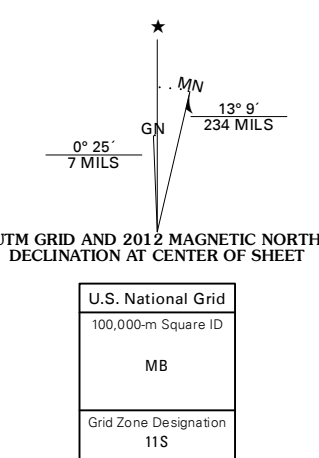
U.S. DEPARTMENT OF THE INTERIOR
U. S. GEOLOGICAL SURVEY



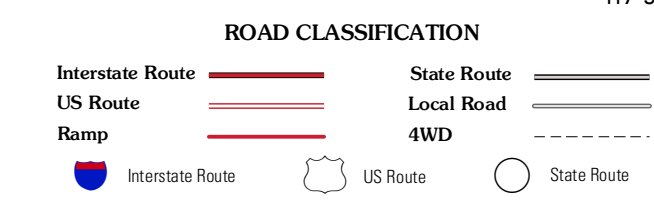
SYLVANIA MOUNTAINS QUADRANGLE
NEVADA-CALIFORNIA
7.5-MINUTE SERIES



Produced by the United States Geological Survey
North American Datum of 1983 (NAD83)
World Geodetic System of 1984 (WGS84). Projection and
1 000-meter grid: Universal Transverse Mercator, Zone 11S
10 000-foot ticks: Nevada Coordinate System of 1983 (west
zone), California Coordinate System of 1983 (4 zone)



CONTOUR INTERVAL 40 FEET
NORTH AMERICAN VERTICAL DATUM OF 1988
This map was produced to conform with the
National Geospatial Program US Topo Product Standard, 2011.
A metadata file associated with this product is draft version 0.6.1



QUADRANGLE LOCATION

Oasis Divide	Lida Wash SW	Lida Wash
Sylvania Canyon	Sylvania Mountains	Magruder Mountain
Horse Thief Canyon	Last Chance Mountain	Tule Canyon

SYLVANIA MOUNTAINS, NV-CA
2012

ADJOINING 7.5' QUADRANGLES