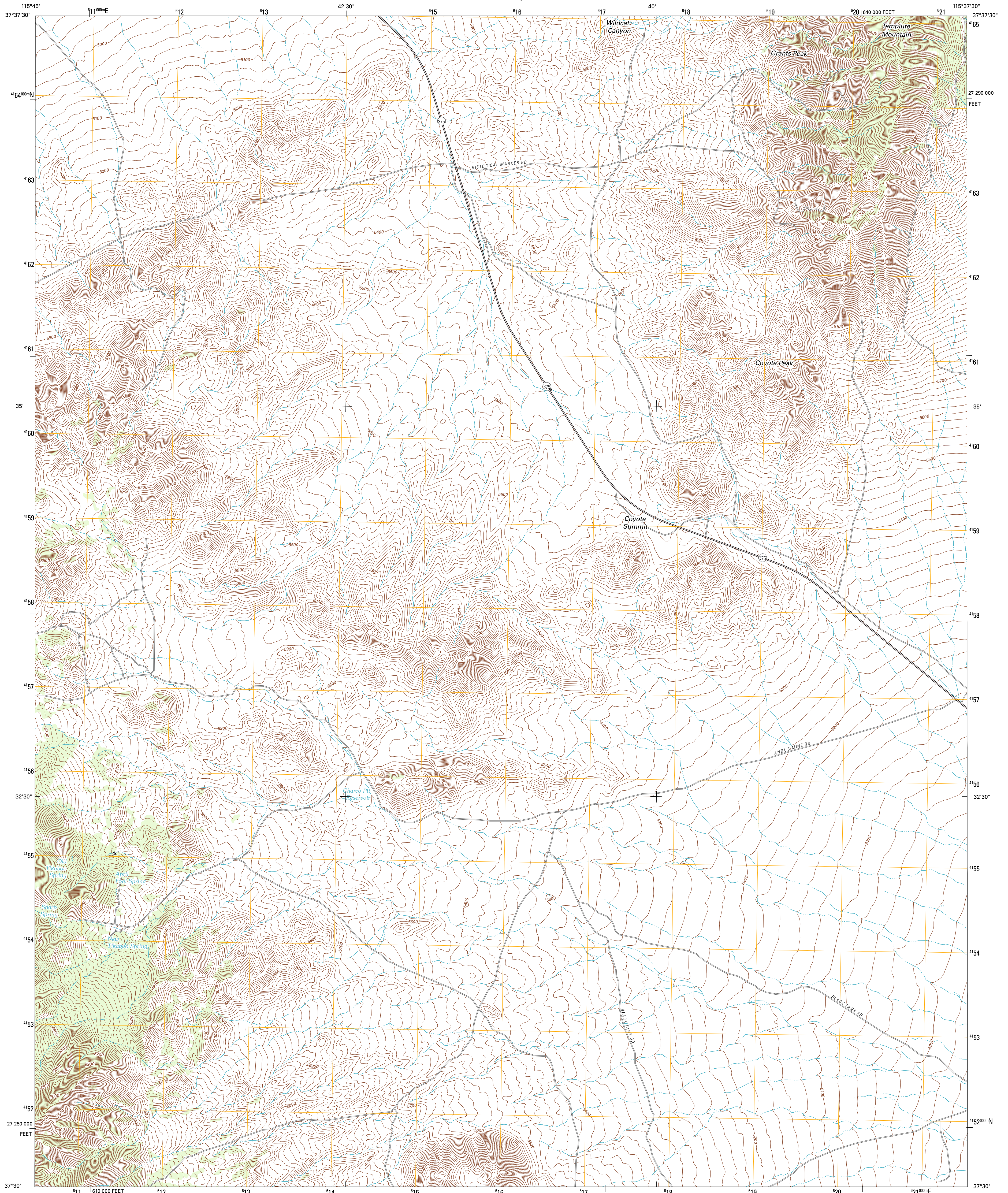




U.S. DEPARTMENT OF THE INTERIOR
U. S. GEOLOGICAL SURVEY

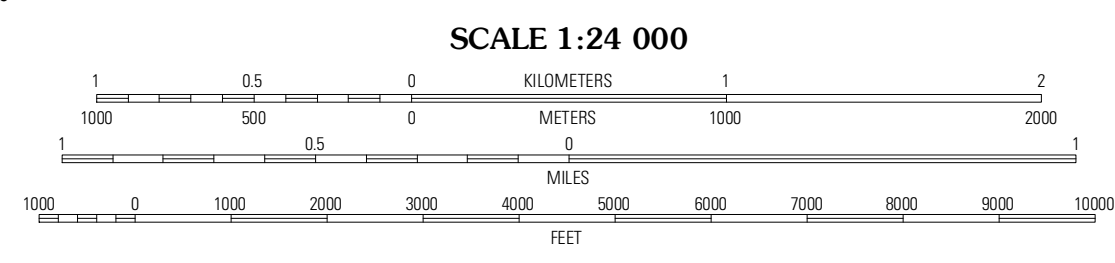
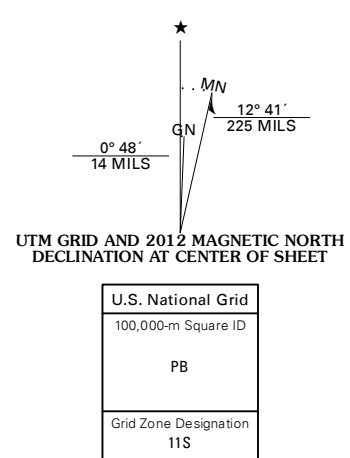


TEMPIUTE MOUNTAIN SOUTH QUADRANGLE
NEVADA-LINCOLN CO.
7.5-MINUTE SERIES



Produced by the United States Geological Survey
North American Datum of 1983 (NAD83)
World Geodetic System of 1984 (WGS84). Projection and
1 000-meter grid: Universal Transverse Mercator, Zone 11S
10 000-foot ticks: Nevada Coordinate System of 1983 (east
zone)

Imagery.....NAIP, July 2010 - November 2010
Roads.....©2006-2011 TomTom
Names.....GNIS, 2011
Hydrography.....National Hydrography Dataset, 2010
Contours.....National Elevation Dataset, 2004
Boundaries.....Census, IBWC, IBC, USGS, 1972 - 2010



CONTOUR INTERVAL 20 FEET
NORTH AMERICAN VERTICAL DATUM OF 1988

This map was produced to conform with the
National Geospatial Program US Topo Product Standard, 2011.
A metadata file associated with this product is draft version 0.6.1

NEVADA

ROAD CLASSIFICATION

Interstate Route State Route

US Route Local Road

Ramp 4WD

Interstate Route US Route State Route

QUADRANGLE LOCATION

White Blotch Springs NE	Tempiute Mountain North	Monte Mountain
White Blotch Springs SE	Tempiute Mountain South	Tempiute Mountain SE
Cattle Spring	Groom Range	Groom Range NE

ADJOINING 7.5 QUADRANGLES

TEMPIUTE MOUNTAIN SOUTH, NV
2012