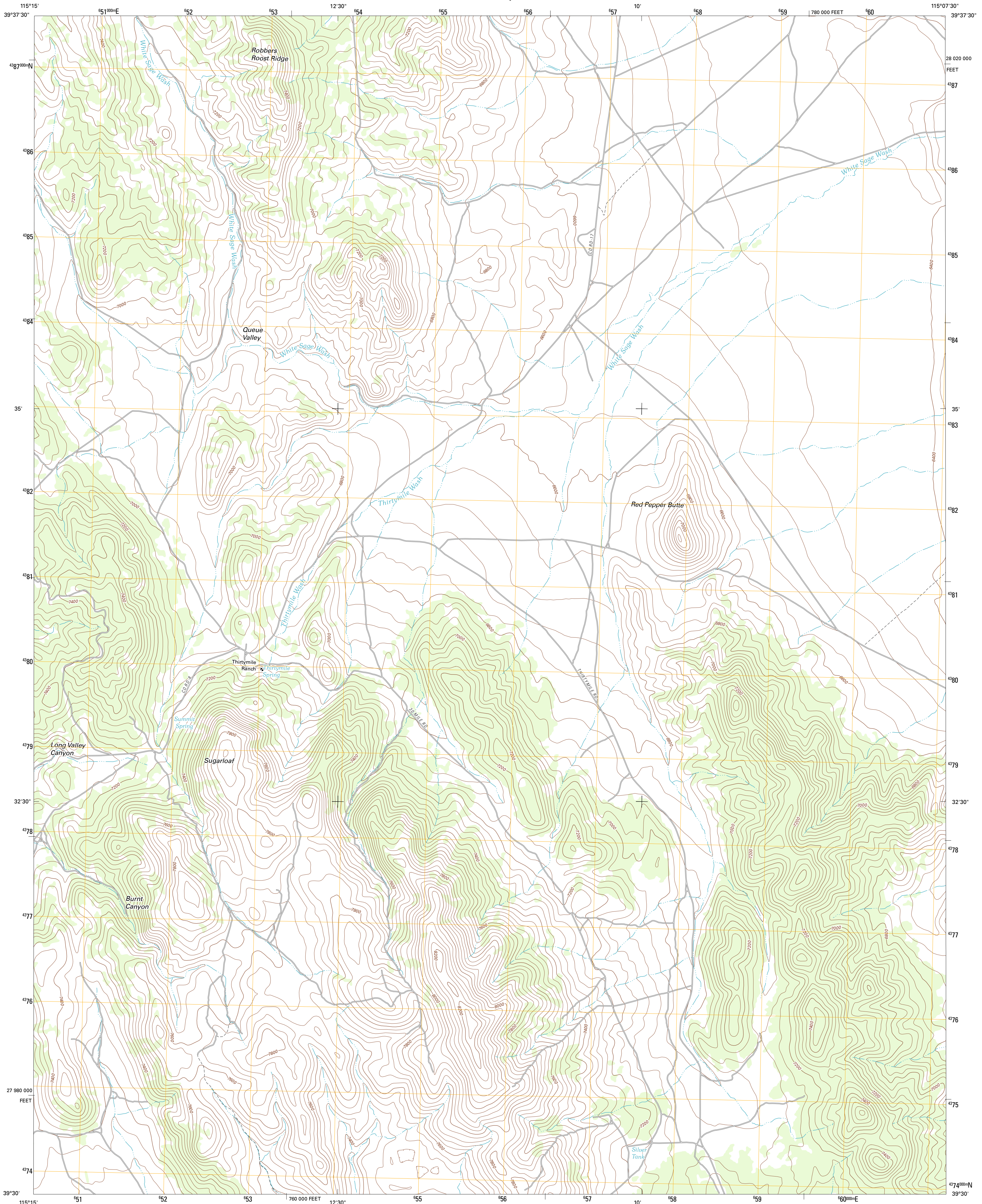




U.S. DEPARTMENT OF THE INTERIOR
U. S. GEOLOGICAL SURVEY

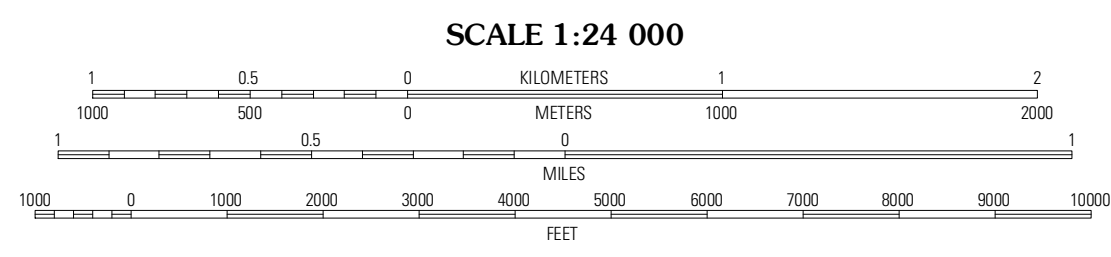
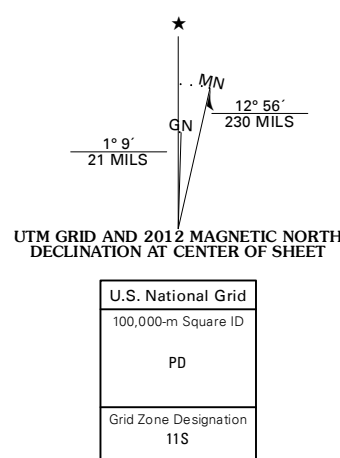


THIRTYMILE RANCH QUADRANGLE
NEVADA-WHITE PINE CO.
7.5-MINUTE SERIES



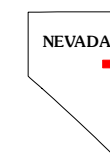
Produced by the United States Geological Survey
North American Datum of 1983 (NAD83)
World Geodetic System of 1984 (WGS84) Projection and
1 000-meter grid: Universal Transverse Mercator, Zone 11 S
10 000-foot ticks: Nevada Coordinate System of 1983 (east zone)

Imagery.....NAP, June 2010
Roads.....©2006-2011 TomTom
Names.....GNS, 2011
Hydrography.....National Hydrography Dataset, 2010
Contours.....National Elevation Dataset, 2004
Boundaries.....Census, IBWC, IBC, USGS, 1972 - 2010



CONTOUR INTERVAL 40 FEET
NORTH AMERICAN VERTICAL DATUM OF 1988

This map was produced to conform with the
National Geospatial Program US Topo Product Standard, 2011.
A metadata file associated with this product is draft version 0.6.1



QUADRANGLE LOCATION

McBrides Sheep Well	White Sage Well	Hunter Point
Dickenson Well	Thirtymile Ranch	Combs Creek
Summy Springs	Marking Canal Summit	Robbison Summit

ROAD CLASSIFICATION

Interstate Route	State Route
US Route	Local Road
Ramp	4WD

Legend for road types: Interstate Route (thick red line), US Route (red line), Ramp (red line with blue triangle), State Route (grey line), Local Road (grey line), 4WD (dashed grey line).

THIRTYMILE RANCH, NV
2012

ADJOINING 7.5' QUADRANGLES