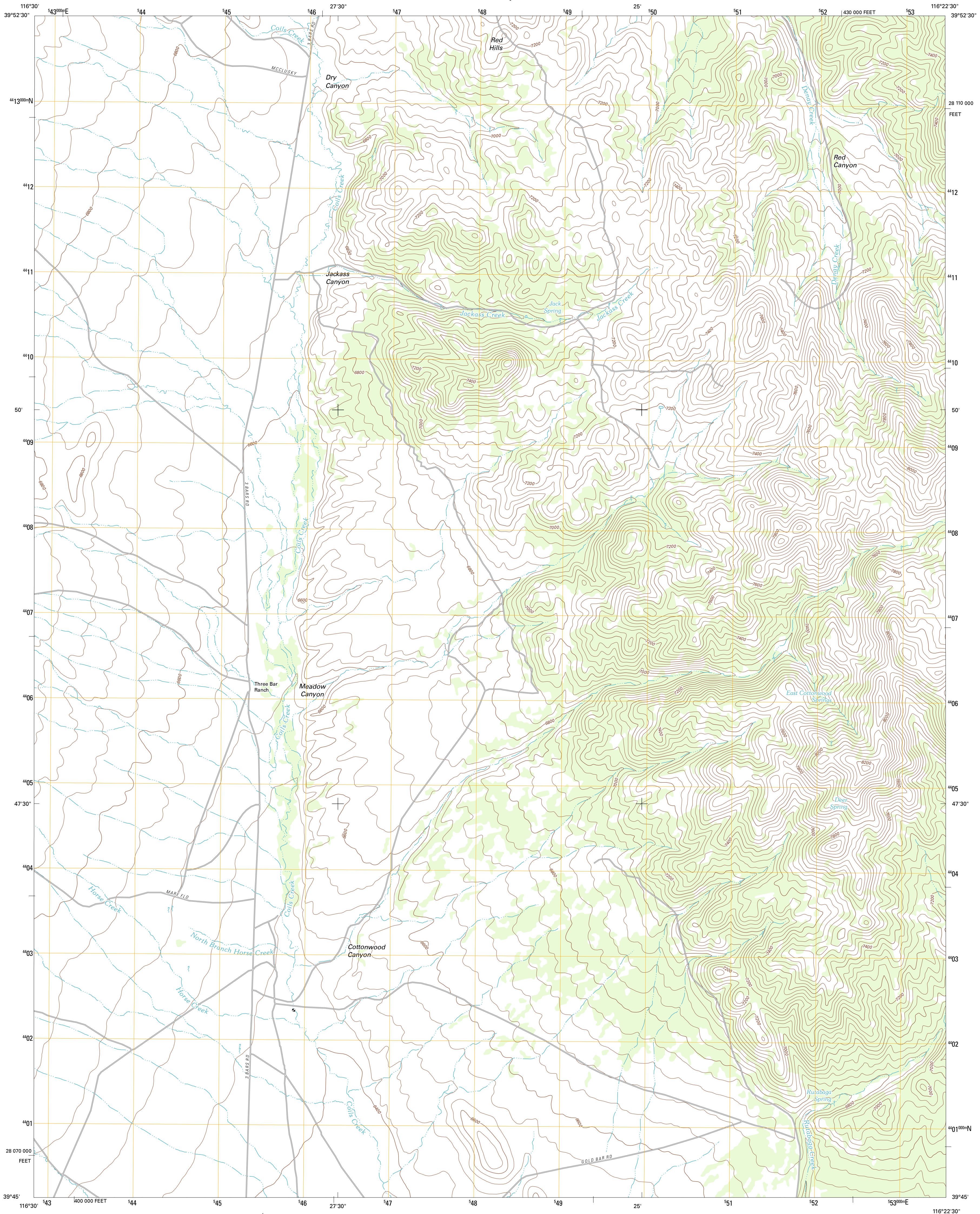




U.S. DEPARTMENT OF THE INTERIOR  
U. S. GEOLOGICAL SURVEY



THREE BAR RANCH QUADRANGLE  
NEVADA-EUREKA CO.  
7.5-MINUTE SERIES



Produced by the United States Geological Survey  
North American Datum of 1983 (NAD83)  
World Geodetic System of 1984 (WGS84). Projection and  
1 000-meter grid: Universal Transverse Mercator, Zone 11S  
10 000-foot ticks: Nevada Coordinate System of 1983 (east zone)

Imagery.....NAIP, June 2010  
Roads.....©2006-2011 TomTom  
Names.....GNIS, 2011  
Hydrography.....National Hydrography Dataset, 2010  
Contours.....National Elevation Dataset, 1999  
Boundaries.....Census, BWC, IBC, USGS, 1972 - 2010

UTM GRID AND 2012 MAGNETIC NORTH  
DECLINATION AT CENTER OF SHEET

|                       |
|-----------------------|
| U.S. National Grid    |
| 100,000m Square ID    |
| NE                    |
| Grid Zone Designation |
| 11S                   |

SCALE 1:24 000

1 000 0 500 0 500 1 000 KILOMETERS  
1 000 0 500 0 500 1 000 METERS  
1 000 0 1000 2000 3000 4000 5000 6000 7000 8000 9000 10000 FEET

CONTOUR INTERVAL 40 FEET  
NORTH AMERICAN VERTICAL DATUM OF 1988

This map was produced to conform with the  
National Geospatial Program US Topo Product Standard, 2011.  
A metadata file associated with this product is draft version 0.6.1



#### ROAD CLASSIFICATION

Interstate Route  
US Route  
Ramp  
State Route  
Local Road  
4WD

#### QUADRANGLE LOCATION

|                  |                  |                        |
|------------------|------------------|------------------------|
| Walt Hot Springs | Tonkin Summit    | Cooper Peak            |
| Fagin Mountain   | Three Bar Ranch  | Roberts Creek Mountain |
| Shagasta         | Bartine Ranch NW | Bartine Ranch NE       |

ADJOINING 7.5' QUADRANGLES

THREE BAR RANCH, NV  
2012