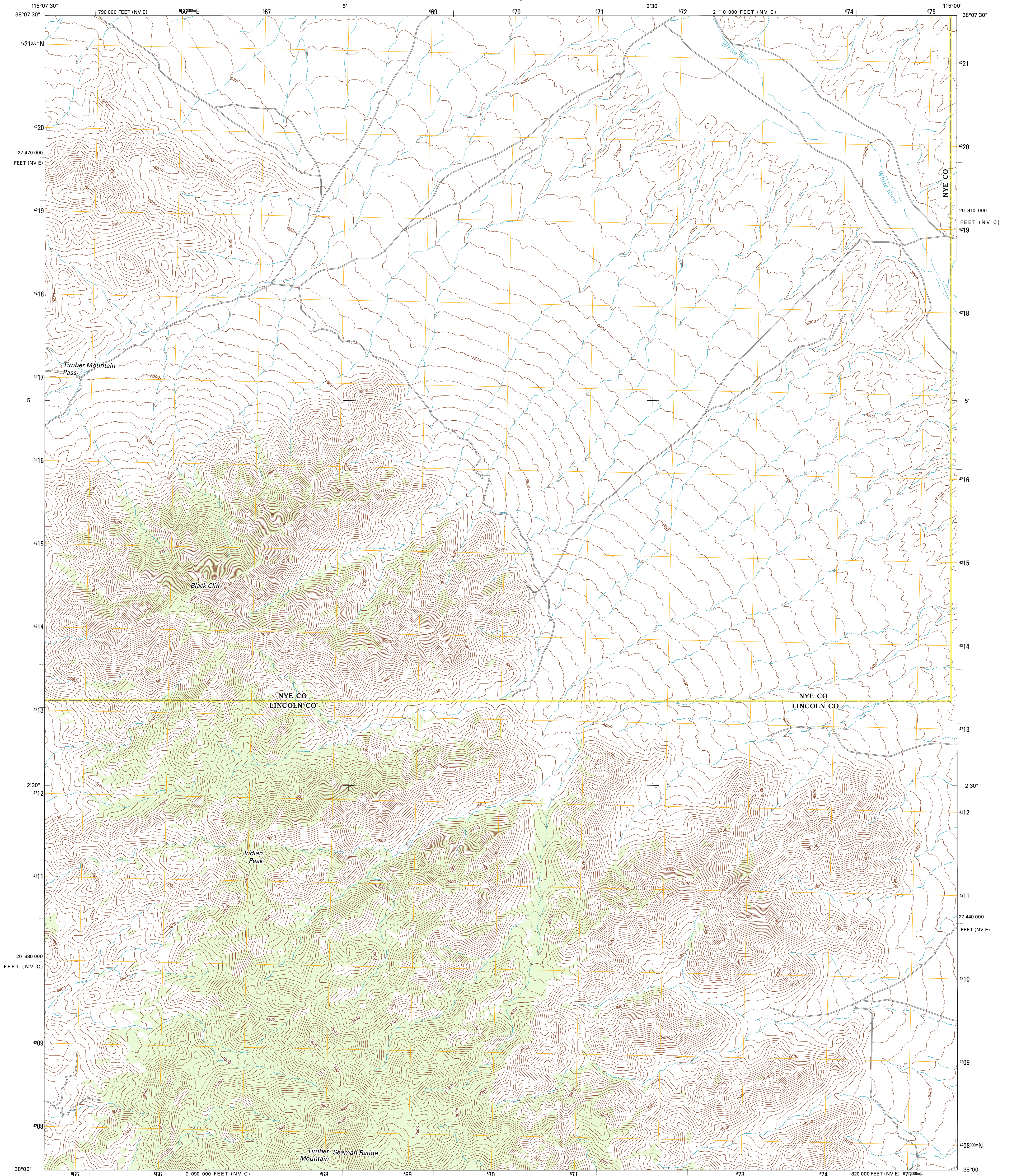




U.S. DEPARTMENT OF THE INTERIOR  
U. S. GEOLOGICAL SURVEY

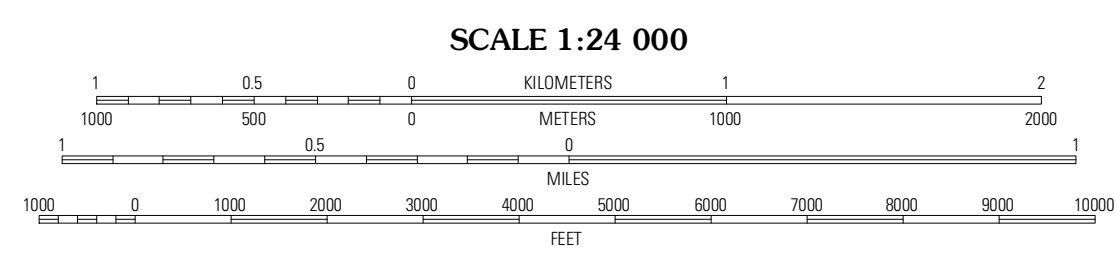
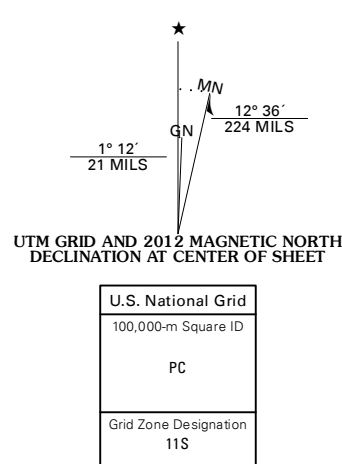


TIMBER MOUNTAIN PASS EAST QUADRANGLE  
NEVADA  
7.5-MINUTE SERIES



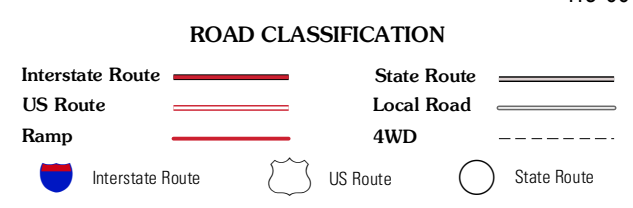
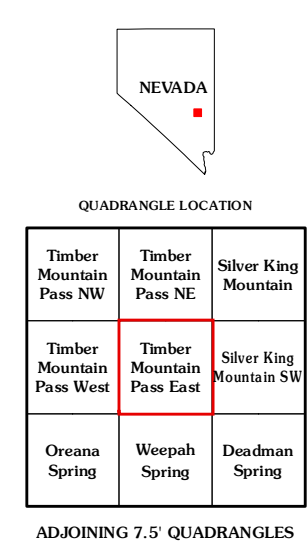
Produced by the United States Geological Survey  
North American Datum of 1983 (NAD83)  
World Geodetic System of 1984 (WGS84) Projection and  
1 000-meter grid: Universal Transverse Mercator, Zone 11S  
10 000-foot ticks: Nevada Coordinate System of 1983  
(central and east zones)

Imagery.....N.A.I.P., July 2010  
Roads.....©2006-2011 TomTom  
Names.....G.N.S., 2011  
Hydrography.....National Hydrography Dataset, 2010  
Contours.....National Elevation Dataset, 2004  
Boundaries.....Census, IBWC, IBC, USGS, 1972 - 2010



CONTOUR INTERVAL 40 FEET  
NORTH AMERICAN VERTICAL DATUM OF 1988

This map was produced to conform with the  
National Geospatial Program US Topo Product Standard, 2011.  
A metadata file associated with this product is draft version 0.6.1



TIMBER MOUNTAIN PASS EAST, NV  
2012

ADJOINING 7.5' QUADRANGLES

Timber Mountain Pass SW	Timber Mountain Pass NE	Silver King Mountain
Timber Mountain Pass West	Timber Mountain Pass East	Silver King Mountain SW
Oreana Spring	Weepah Spring	Deadman Spring