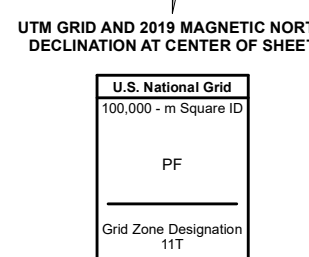
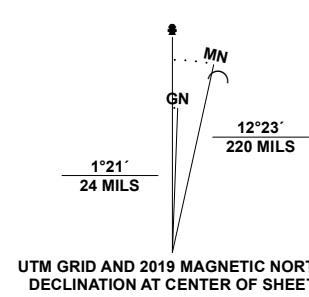


**Produced by the United States Geological Survey**

North American Datum of 1983 (NAD83)  
World Geodetic System of 1984 (WGS84), Projection and  
1 000-meter grid; Universal Transverse Mercator, Zone 11T  
This map is not a legal document. Boundaries may be  
generalized for this map scale. Private lands within government  
reservations may not be shown. Obtain permission before  
entering private lands.

Imagery.....NAIP, June 2017 - November 2017  
Roads.....U.S. Census Bureau, 2018  
Names.....GNIS, 1979 - 2021  
Hydrography.....National Hydrography Dataset, 2006 - 2020  
Contours.....National Elevation Dataset, 1999  
Boundaries.....Multiple sources: see metadata file 2019 - 2021  
Public Land Survey System.....BLM, 2020  
Wetlands.....FWS National Wetlands Inventory 1980 - 2015



CONTOUR INTERVAL 20 FEET  
NORTH AMERICAN VERTICAL DATUM OF 1988  
This map was produced to conform with the  
National Geospatial Program US Topo Product Standard.



QUADRANGLE LOCATION

1	2	3
4	5	6
7	8	

- 1 Welcome
- 2 Wells
- 3 Moor Summit
- 4 Humboldt Peak
- 5 Snow Water Lake NE
- 6 Gordon Creek
- 7 Snow Water Lake
- 8 Veressa

ROAD CLASSIFICATION	
Expressway	Local Connector
Secondary Hwy	Local Road
Ramp	4WD
Interstate Route	US Route
	State Route

**TOBAR, NV**  
2021



NSN 7 5 3 0 4 3 8 5 1 6 4  
NGA REF NO. U.S.S.S.X.2.4.K.4.5.2.7.0