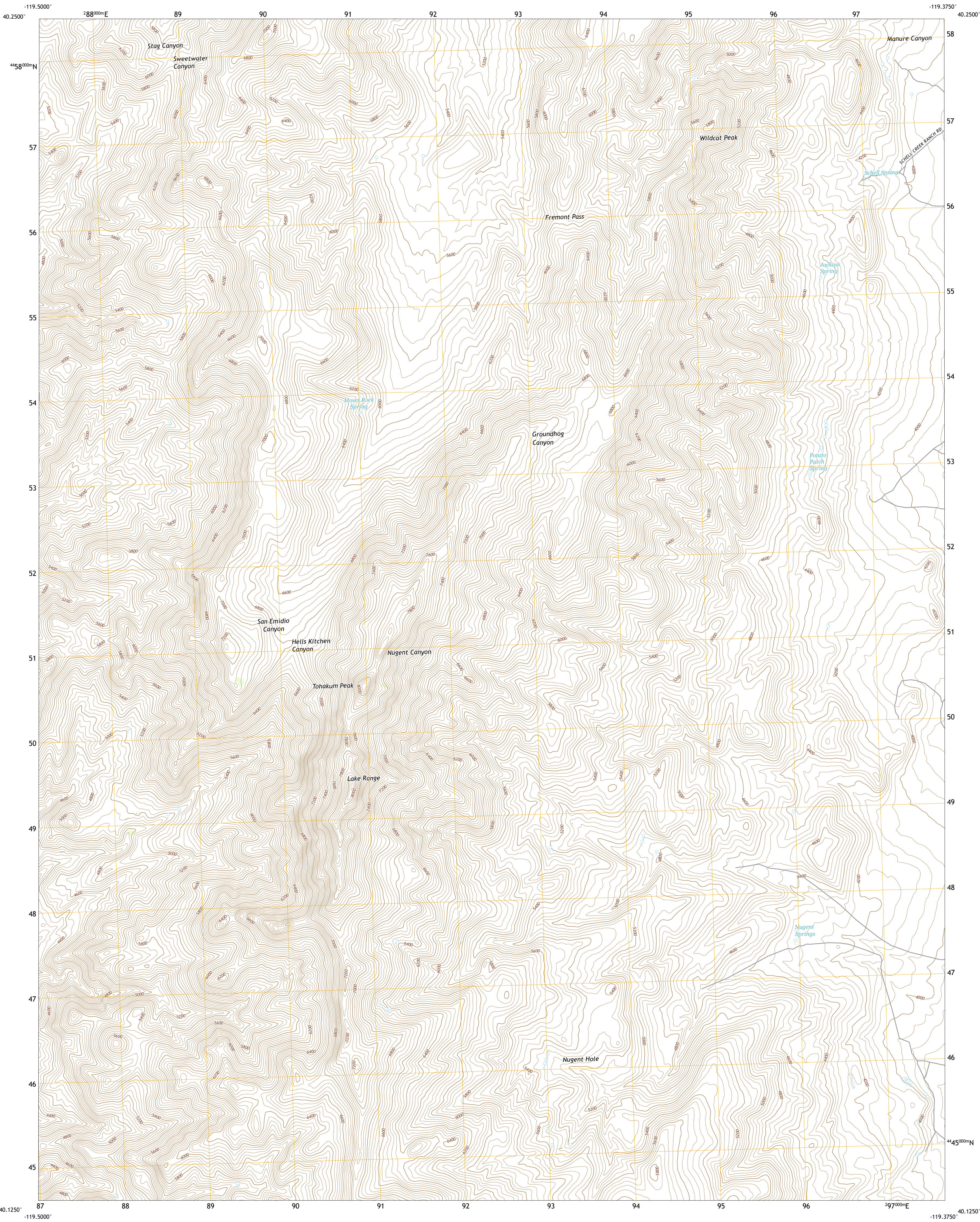




U.S. DEPARTMENT OF THE INTERIOR
U.S. GEOLOGICAL SURVEY



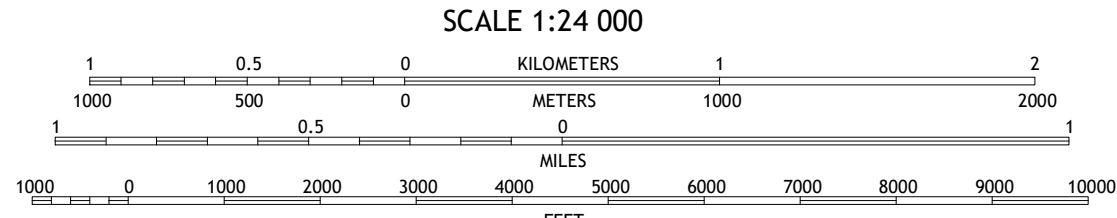
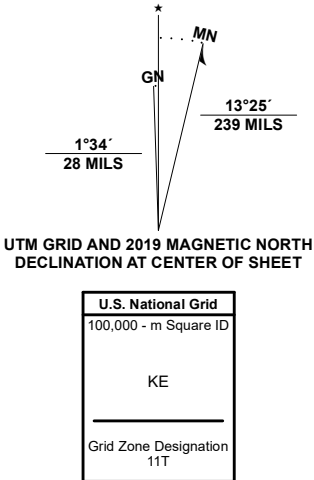
TOHAKUM PEAK NW QUADRANGLE
NEVADA - WASHOE COUNTY
7.5-MINUTE SERIES



Produced by the United States Geological Survey

North American Datum of 1983 (NAD83)
World Geodetic System of 1984 (WGS84). Projection and
1 000-meter grid/Universal Transverse Mercator, Zone 11T
This map is not a legal document. Boundaries may be
generalized for this map scale. Private lands within government
reservations may not be shown. Obtain permission before
entering private lands.

Imagery.....NAIP, July 2017 - November 2017
Roads.....U.S. Census Bureau, 2018
Names.....GNIS, 1980 - 2011
Hydrography.....National Hydrography Dataset, 2005 - 2019
Contours.....National Elevation Dataset, 2001 - 2004
Boundaries.....Multiple sources: see metadata file, 2019 - 2021
Public Land Survey System.....BLM, 2020
Wetlands.....FWS National Wetlands Inventory 1980 - 1986



CONTOUR INTERVAL 40 FEET
NORTH AMERICAN VERTICAL DATUM OF 1988
This map was produced to conform with the
National Geospatial Program US Topo Product Standard.



QUADRANGLE LOCATION

1	2	3
4	5	6
7	8	9

- 1 Fox Canyon
- 2 San Emidio Desert South
- 3 Purgatory Peak
- 4 Pyramid NE
- 5 Tohakum Peak NE
- 6 Pyramid SE
- 7 Dove Creek
- 8 Tohakum Peak SE

ROAD CLASSIFICATION	
Expressway	Local Connector
Secondary Hwy	Local Road
Ramp	4WD
Interstate Route	US Route
	State Route

TOHAKUM PEAK NW, NV

2021

