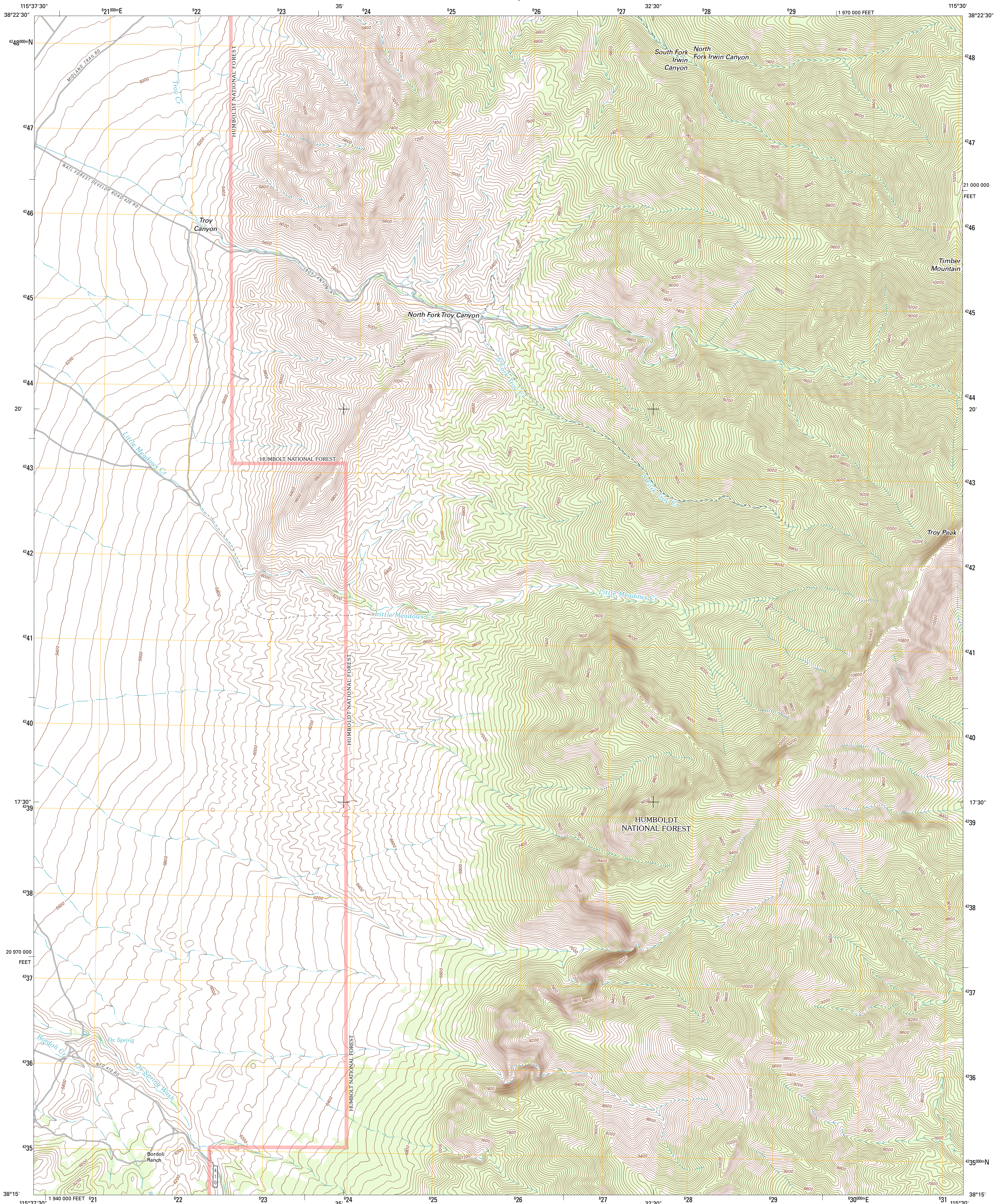




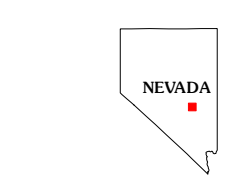
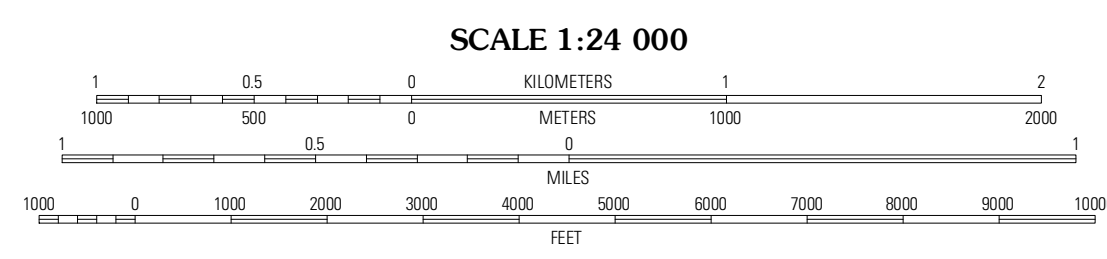
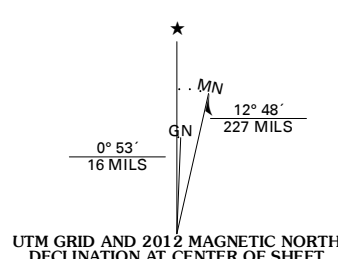
U.S. DEPARTMENT OF THE INTERIOR
U. S. GEOLOGICAL SURVEY



TROY CANYON QUADRANGLE
NEVADA-NYE CO.
7.5-MINUTE SERIES

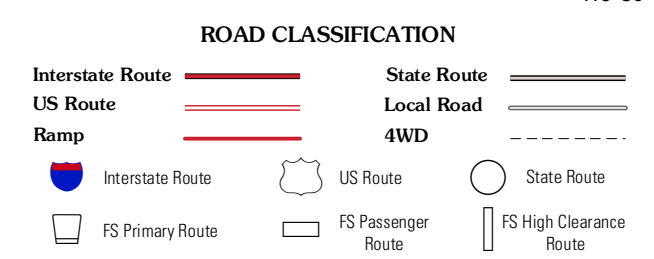


Produced by the United States Geological Survey
North American Datum of 1983 (NAD83)
World Geodetic System of 1984 (WGS84). Projection and
1,000-meter grid. Universal Transverse Mercator, Zone 11S
10,000-foot ticks: Nevada Coordinate System of 1983
(central zone)



QUADRANGLE LOCATION

Christian Spring	Bulwhacker Springs	Heath Canyon
Crows Nest	Troy Canyon	Horse Spring Hills
Niyala	Adaven	Water Gap NW



Check with local Forest Service unit for current travel conditions and restrictions.

Imagery:.....N.A.I.P., June 2010
Roads:.....©2006-2011 TomTom
Roads within US Forest Service Lands:.....FS Topo Data
with limited Forest Service updates, 2009
Names:.....GNIS, 2011
Hydrography:.....National Hydrography Dataset, 2010
Contours:.....National Elevation Dataset, 2004
Boundaries:.....Census, IBWC, IBC, USGS, 1972 - 2010

U.S. National Grid	PC
50,000-m Square ID	
Grid Zone Designation	11S

CONTOUR INTERVAL 40 FEET
NORTH AMERICAN VERTICAL DATUM OF 1988
This map was produced to conform with the
National Geospatial Program US Topo Product Standard, 2011.
A metadata file associated with this product is draft version 0.6.1

TROY CANYON, NV
2012

ADJOINING 7.5 QUADRANGLES