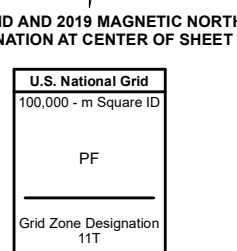
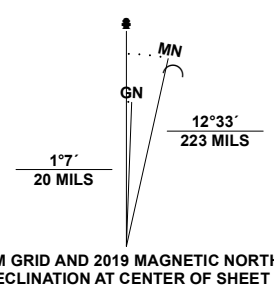


Produced by the United States Geological Survey

North American Datum of 1983 (NAD83) World Geodetic System of 1984 (WGS84) Projection and 1 000-meter grid/Universal Transverse Mercator, Zone 11T This map is not a legal document. Boundaries may be generalized for this map scale. Private lands within government reservations may not be shown. Obtain permission before entering private lands.

Table listing data sources: Imagery (NAIP, 2017), Roads (U.S. Census Bureau, 2016), Names (GNIS, 1980), Hydrography (National Hydrography Dataset, 2020), Contours (National Elevation Dataset, 2018), Boundaries (Multiple sources), Public Land Survey System (BLM, 2020), Wetlands (FWS National Wetlands Inventory, 2013).



CONTOUR INTERVAL 20 FEET NORTH AMERICAN VERTICAL DATUM OF 1988 This map was produced to conform with the National Geospatial Program US Topo Product Standard.



Table of adjoining quadrangles: 1 Hanks Creek SW, 2 Hot Springs Creek, 3 Black Butte SW, 4 Peko Peak, 5 Tabor Flats, 6 Morgan Hill, 7 Deeth, 8 Herder Creek.

Road Classification legend: Expressway, Secondary Hwy, Ramp, Interstate Route, Local Connector, Local Road, 4WD, US Route, State Route.

