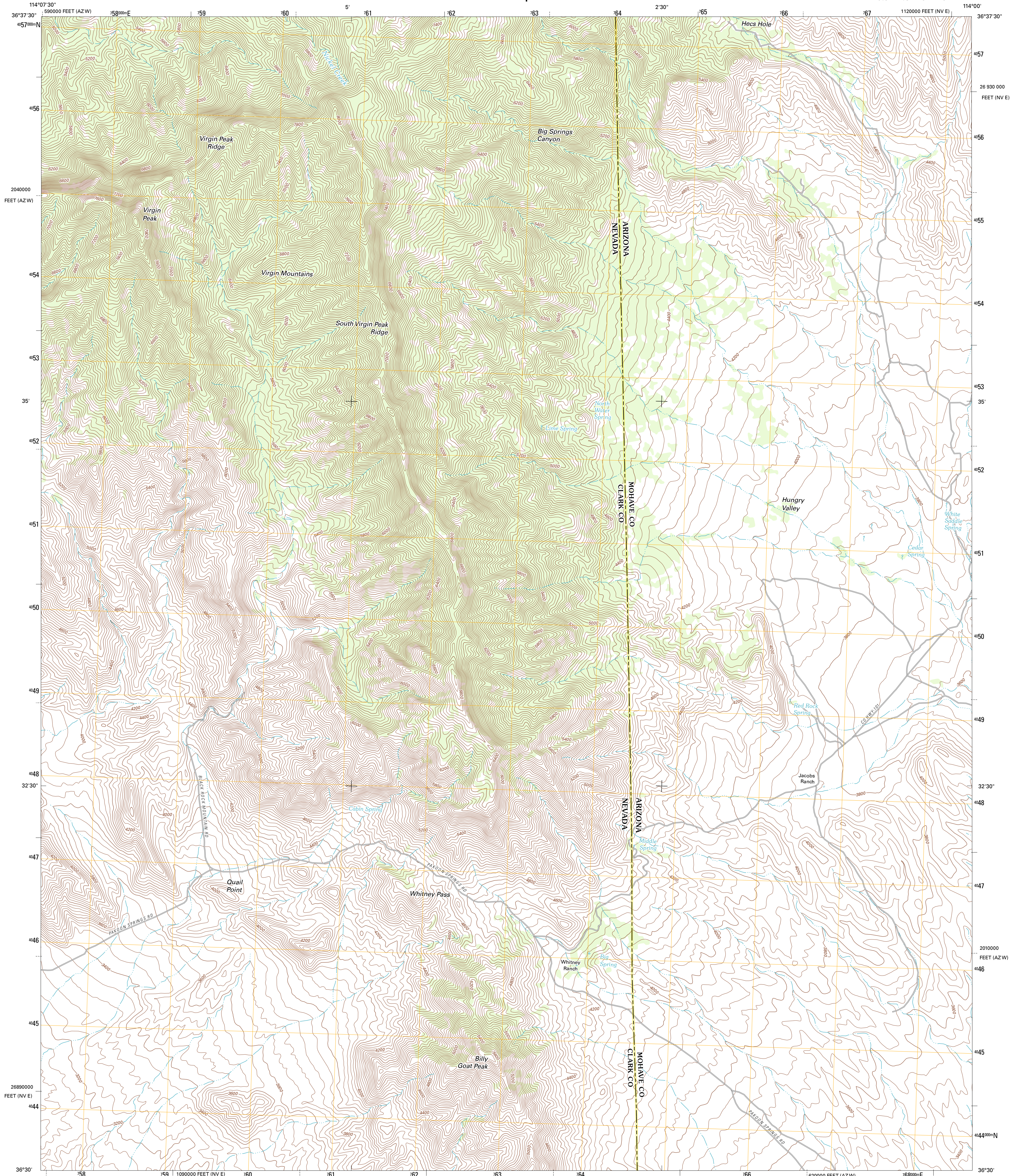




U.S. DEPARTMENT OF THE INTERIOR
U. S. GEOLOGICAL SURVEY

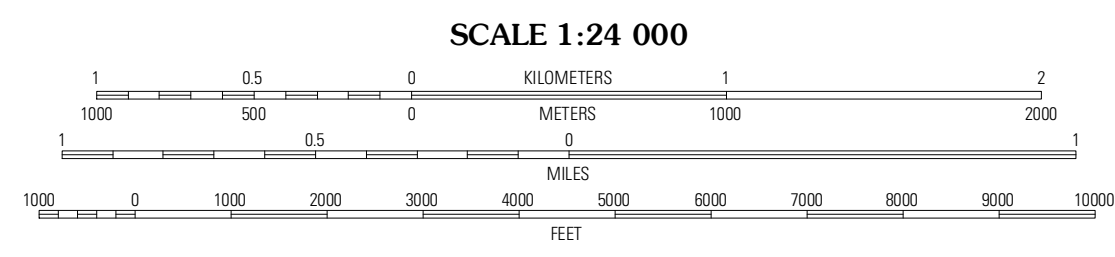
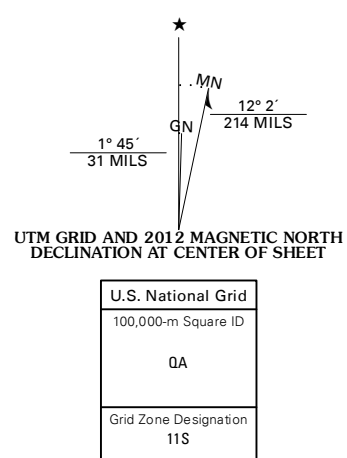


VIRGIN PEAK QUADRANGLE
NEVADA-ARIZONA
7.5-MINUTE SERIES



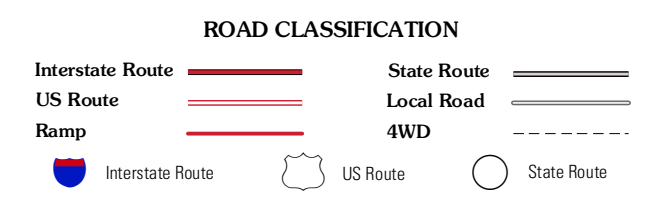
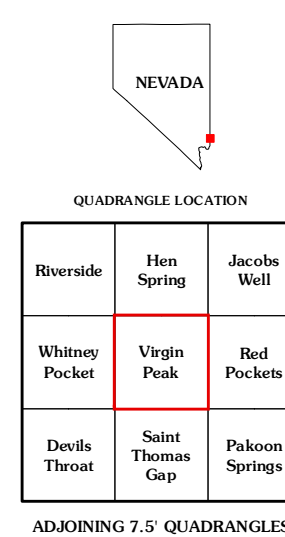
Produced by the United States Geological Survey
North American Datum of 1983 (NAD83)
World Geodetic System of 1984 (WGS84). Projection and
1 000-meter grid: Universal Transverse Mercator, Zone 11S
10 000-foot ticks: Nevada Coordinate System of 1983 (east
zone), Arizona Coordinate System of 1983 (west zone)

Imagery:.....NAIP, May 2010
Roads:.....©2006-2011 TomTom
Names:.....©2006-2011 TomTom
Hydrography:.....National Hydrography Dataset, 2010
Contours:.....National Elevation Dataset, 2002
Boundaries:.....Census, IBWC, IBC, USGS, 1972 - 2010



CONTOUR INTERVAL 40 FEET
NORTH AMERICAN VERTICAL DATUM OF 1988

This map was produced to conform with the
National Geospatial Program US Topo Product Standard, 2011.
A metadata file associated with this product is draft version 0.6.1



Riverside	Hen Spring	Jacobs Well
Whitney Pocket	Virgin Peak	Red Pockets
Devils Throat	Saint Thomas Gap	Pykoon Springs

ADJOINING 7.5' QUADRANGLES

VIRGIN PEAK, NV-AZ
2012