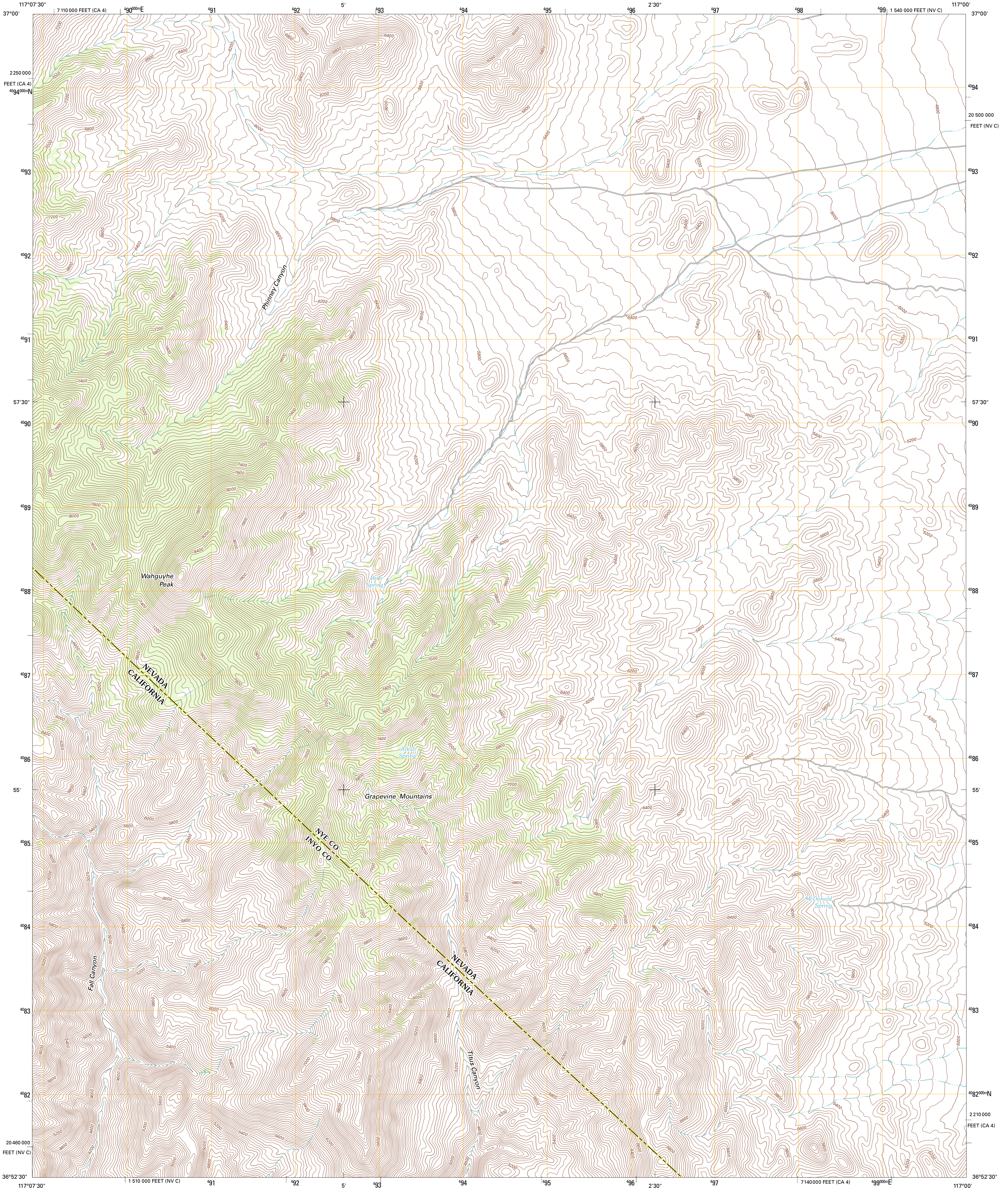




U.S. DEPARTMENT OF THE INTERIOR
U. S. GEOLOGICAL SURVEY

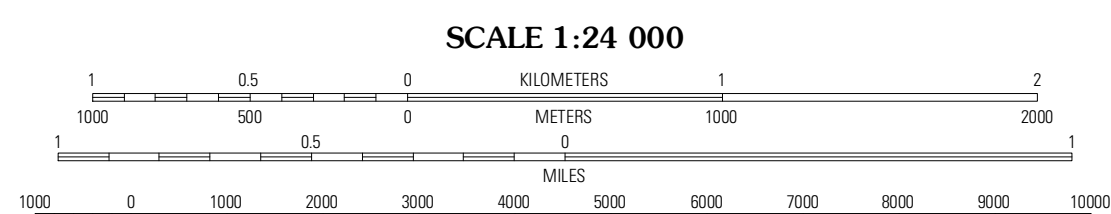
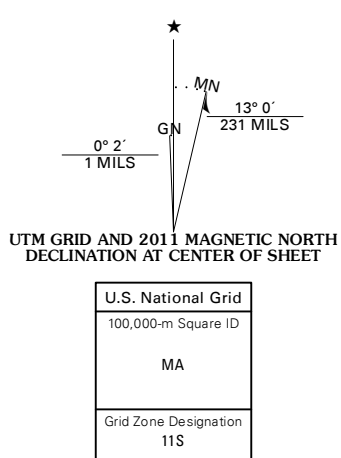


WAHGUYHE PEAK QUADRANGLE
NEVADA-CALIFORNIA
7.5-MINUTE SERIES



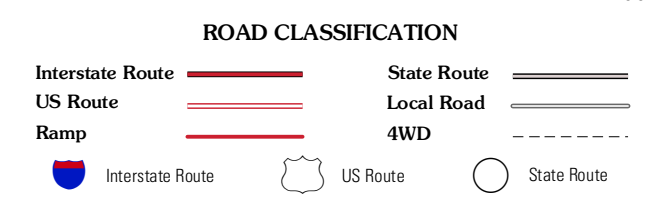
Produced by the United States Geological Survey
North American Datum of 1983 (NAD83)
©2006-2011 TomTom
World Geodetic System of 1984 (WGS84). Projection and
1 000-meter grid: Universal Transverse Mercator, Zone 11S
10 000-foot ticks: Nevada Coordinate System of 1983
(central zone), California Coordinate System of 1983 (4 zone)

Imagery.....NAIP, May 2010
Roads.....©2006-2011 TomTom
Names.....GNIS, 2011
Hydrography.....National Hydrography Dataset, 2010
Contours.....National Elevation Dataset, 2001
Boundaries.....Census, IBWC, IBC, USGS, 1972 - 2010



CONTOUR INTERVAL 40 FEET
NORTH AMERICAN VERTICAL DATUM OF 1988

This map was produced to conform with the
National Geospatial Program US Topo Product Standard, 2011.
A metadata file associated with this product is draft version 0.6.1



QUADRANGLE LOCATION

Bonnie Claire SW	Bonnie Claire SE	Springdale SW
Grapevine Peak	Wahguyhe Peak	Bullfrog Mountain
Fall Canyon	Thimble Peak	Daylight Pass

WAHGUYHE PEAK, NV-CA
2011

ADJOINING 7.5' QUADRANGLES