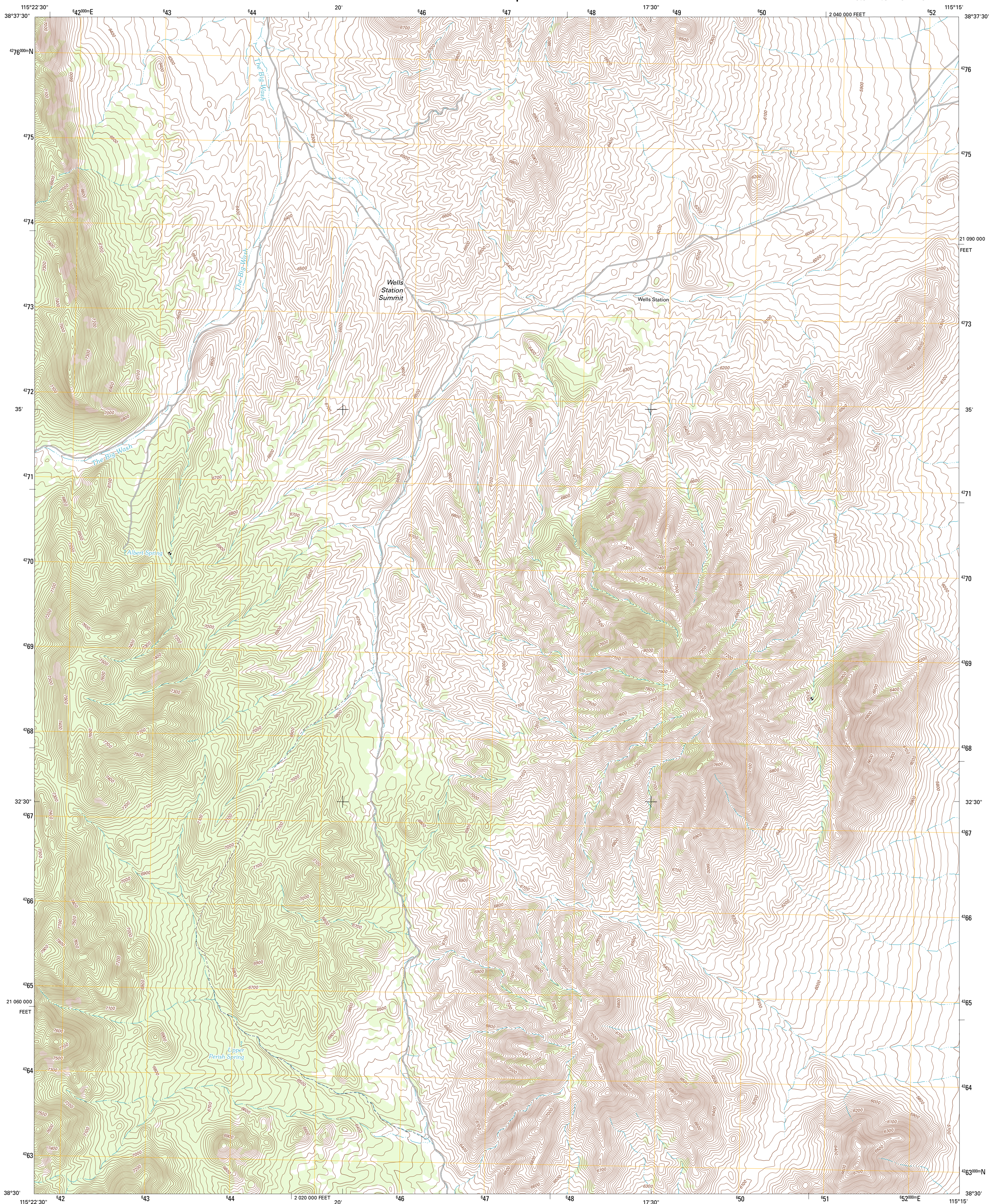




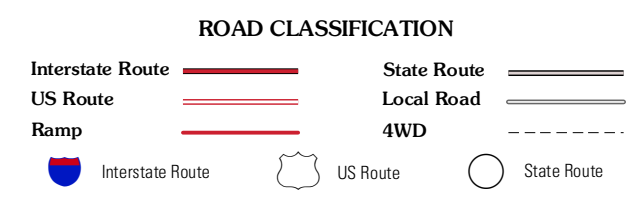
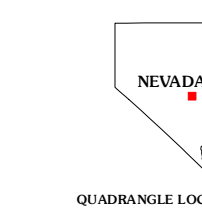
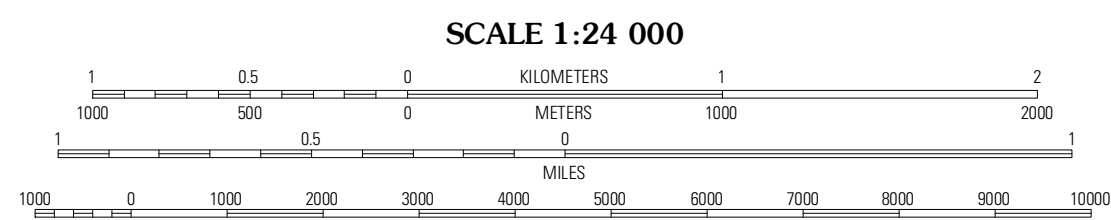
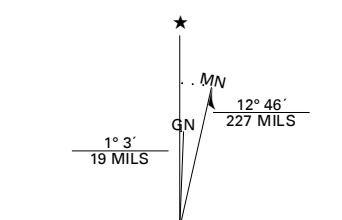
U.S. DEPARTMENT OF THE INTERIOR
U. S. GEOLOGICAL SURVEY



WELLS STATION QUADRANGLE
NEVADA-NYE CO.
7.5-MINUTE SERIES



Produced by the United States Geological Survey
North American Datum of 1983 (NAD83)
World Geodetic System of 1984 (WGS84). Projection and
1 000-meter grid: Universal Transverse Mercator, Zone 11S
10 000-foot ticks: Nevada Coordinate System of 1983
(central zone)



QUADRANGLE LOCATION

Current	Callway Well	Moorman Spring NW
Blue Eagle Mountain	Wells Station	Moorman Spring
Heath Canyon	Forest Home NE	Sunnyside NW

Imagery.....NAIP, June 2010
Roads.....©2006-2011 TomTom
Names.....GNIS, 2011
Hydrography.....National Hydrography Dataset, 2010
Contours.....National Elevation Dataset, 2004
Boundaries.....Census, BWC, IBC, USGS, 1972 - 2010

U.S. National Grid

100,000m Square ID	PC
Grid Zone Designation	11S

CONTOUR INTERVAL 20 FEET
NORTH AMERICAN VERTICAL DATUM OF 1988

This map was produced to conform with the
National Geospatial Program US Topo Product Standard, 2011.
A metadata file associated with this product is draft version 0.6.1

WELLS STATION, NV
2012

ADJOINING 7.5 QUADRANGLES