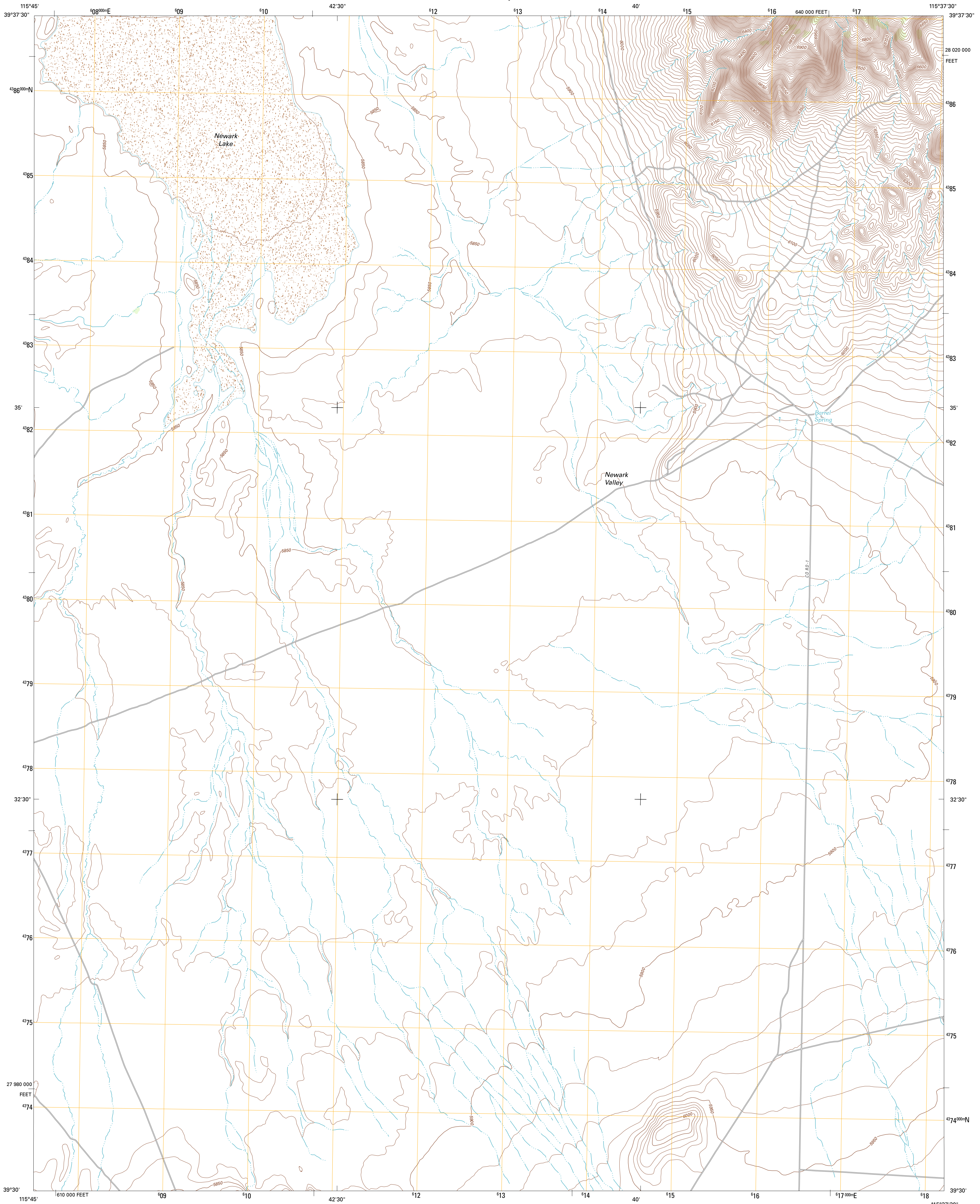




U.S. DEPARTMENT OF THE INTERIOR  
U. S. GEOLOGICAL SURVEY

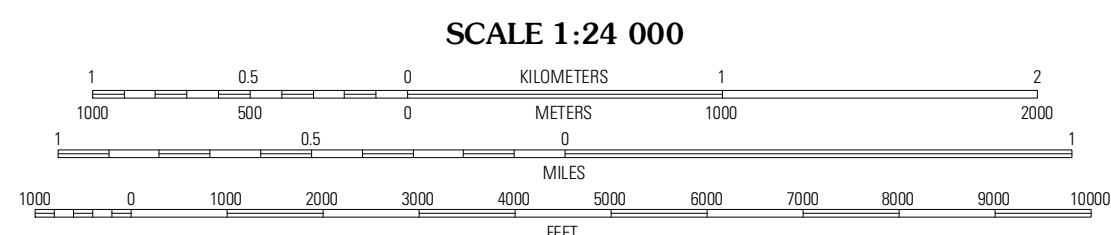
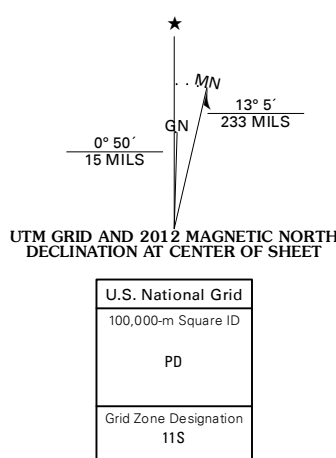


WEST OF BECK PASS QUADRANGLE  
NEVADA-WHITE PINE CO.  
7.5-MINUTE SERIES



Produced by the United States Geological Survey  
North American Datum of 1983 (NAD83)  
World Geodetic System of 1984 (WGS84) Projection and  
1 000-meter grid: Universal Transverse Mercator, Zone 11 S  
10 000-foot ticks: Nevada Coordinate System of 1983 (east zone)

Imagery.....N.A.P., June 2010  
Roads.....©2006-2011 TomTom  
Names.....GNIS, 2011  
Hydrography.....National Hydrography Dataset, 2010  
Contours.....National Elevation Dataset, 2004  
Boundaries.....Census, IBWC, IBC, USGS, 1972 - 2010



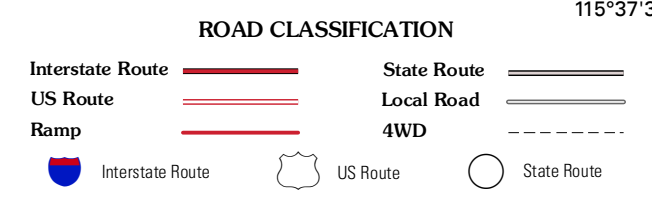
CONTOUR INTERVAL 10 FEET  
NORTH AMERICAN VERTICAL DATUM OF 1988

This map was produced to conform with the  
National Geospatial Program US Topo Product Standard, 2011.  
A metadata file associated with this product is draft version 0.6.1



QUADRANGLE LOCATION

Rattlesnake Mountain	Buck Mountain West	Buck Mountain East
Diamond Peak	West of Beck Pass	Beck Pass
Silverado Mountain	Pancake Summit	East of Pancake Summit



WEST OF BECK PASS, NV  
2012

ADJOINING 7.5' QUADRANGLES