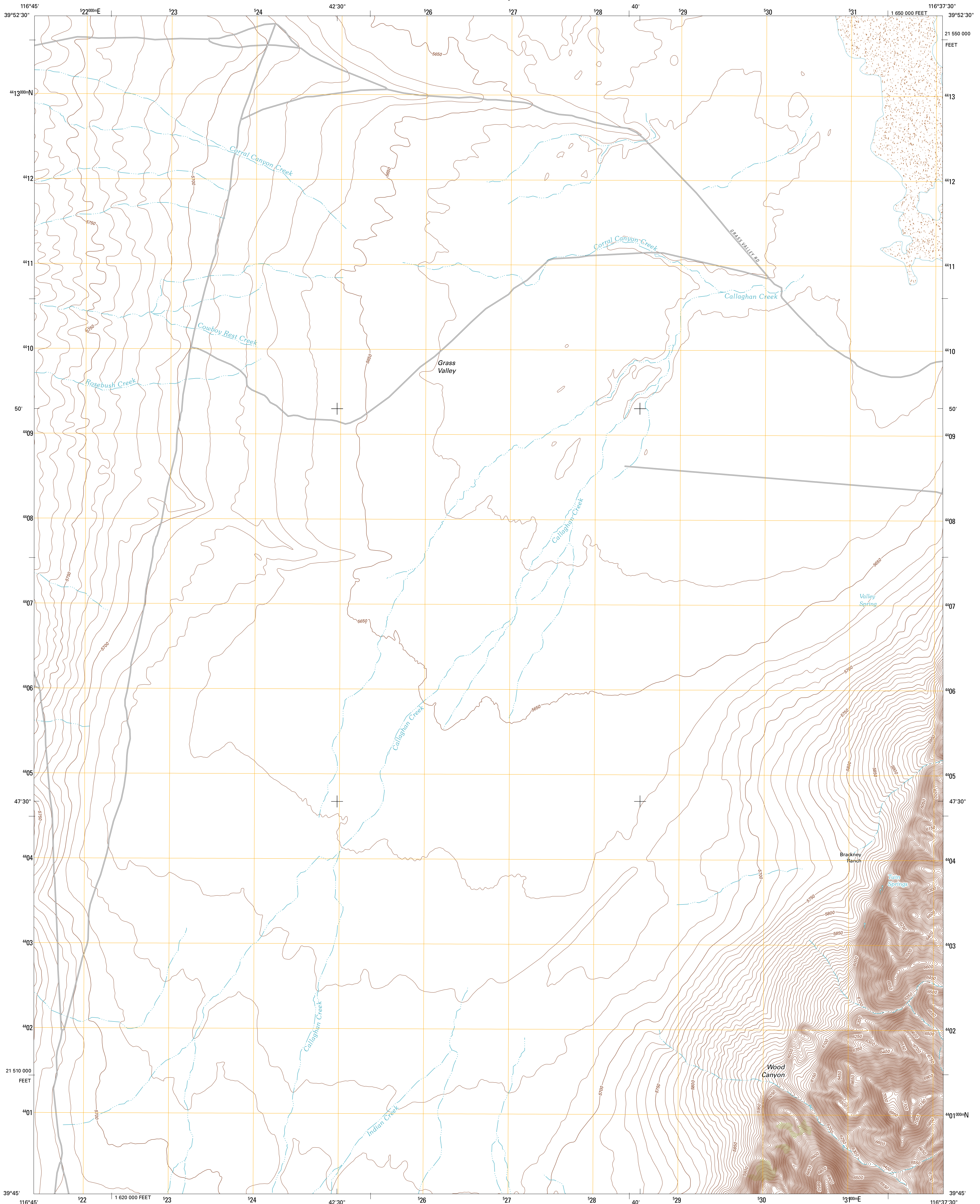




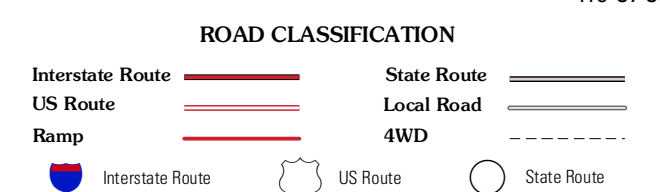
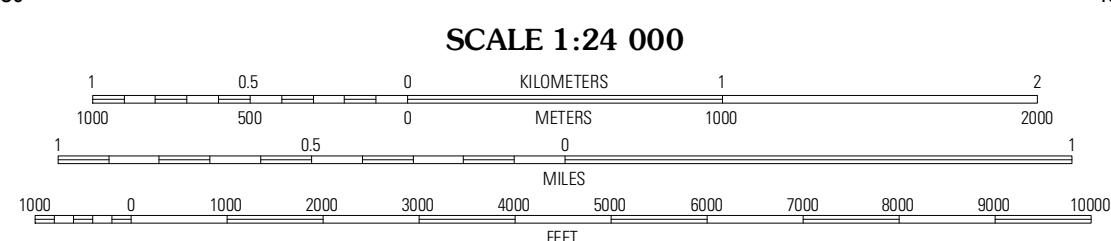
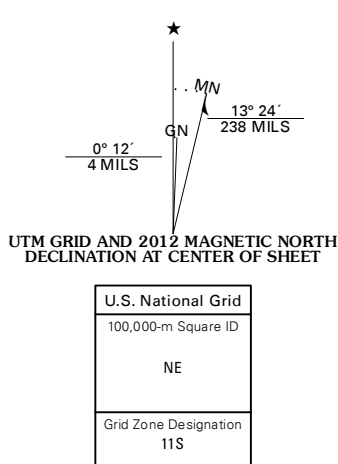
U.S. DEPARTMENT OF THE INTERIOR  
U. S. GEOLOGICAL SURVEY



WEST OF FAGIN MOUNTAIN QUADRANGLE  
NEVADA-LANDER CO.  
7.5-MINUTE SERIES



Produced by the United States Geological Survey  
North American Datum of 1983 (NAD83)  
World Geodetic System of 1984 (WGS84). Projection and  
1 000-meter grid: Universal Transverse Mercator, Zone 11S  
10 000-foot ticks: Nevada Coordinate System of 1983  
(central zone)



QUADRANGLE LOCATION

Coral Canyon	Little Hot Springs	Walt Hot Springs
Cowboy Rest Creek	West of Fagin Mountain	Fagin Mountain
Grass Valley Ranch	Salt Marsh Canyon	Shagmasty

ADJOINING 7.5 QUADRANGLES

CONTOUR INTERVAL 10 FEET  
NORTH AMERICAN VERTICAL DATUM OF 1988

This map was produced to conform with the National Geospatial Program US Topo Product Standard, 2011. A metadata file associated with this product is draft version 0.6.1

WEST OF FAGIN MOUNTAIN, NV  
2012