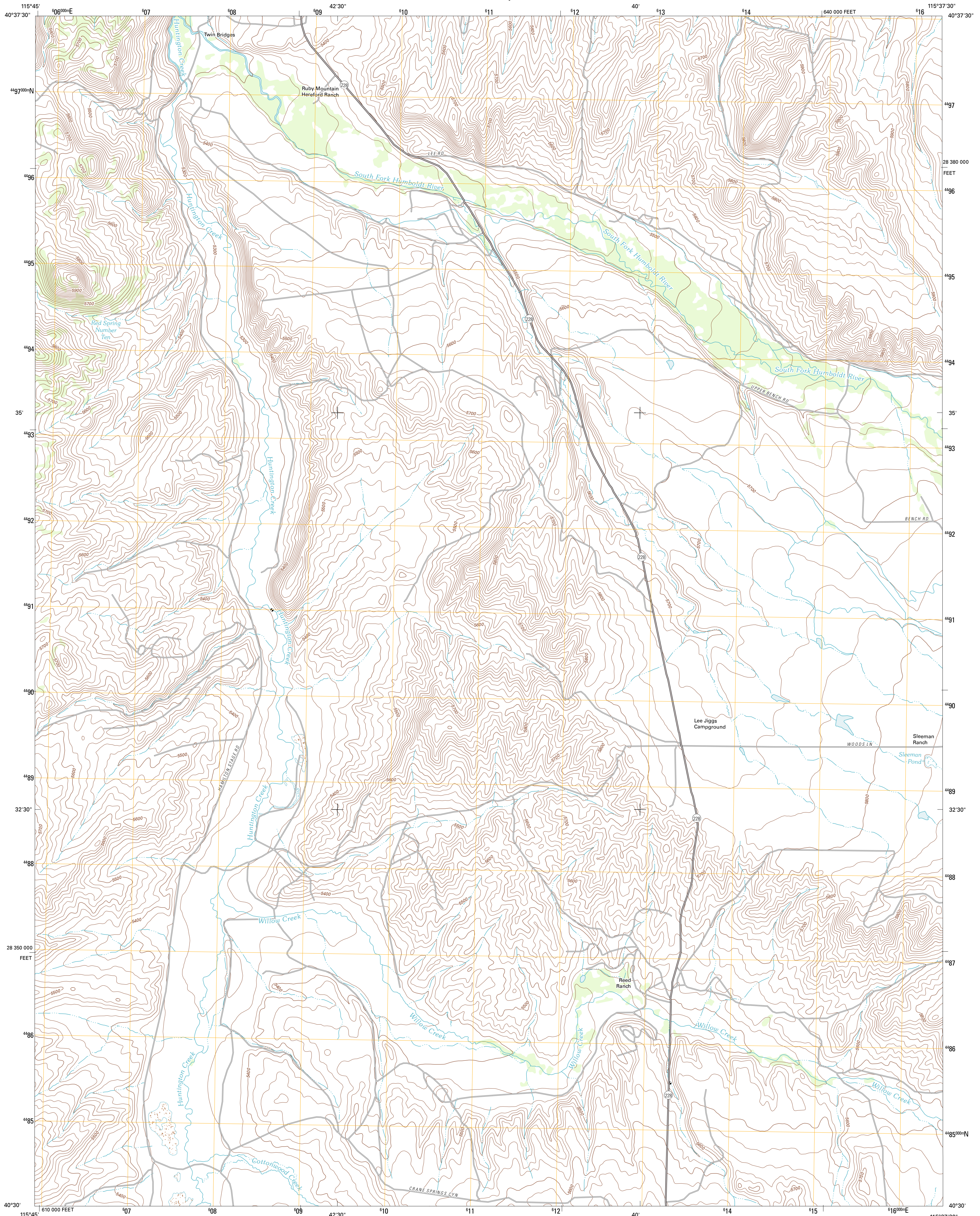




U.S. DEPARTMENT OF THE INTERIOR
U. S. GEOLOGICAL SURVEY

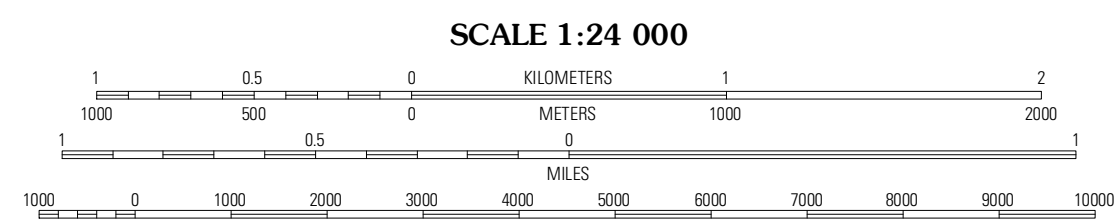
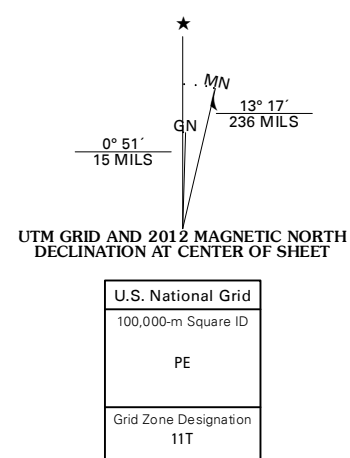


WEST OF LEE QUADRANGLE
NEVADA-ELKO CO.
7.5-MINUTE SERIES



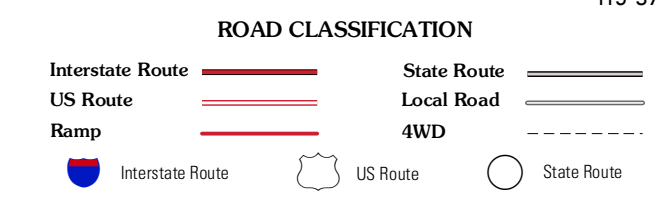
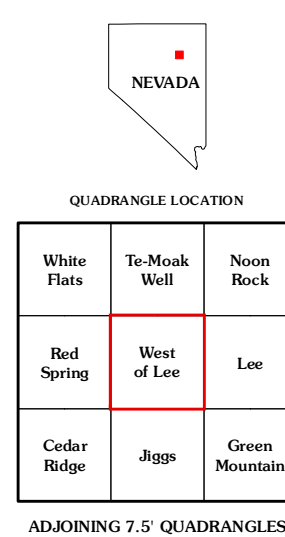
Produced by the United States Geological Survey
North American Datum of 1983 (NAD83)
World Geodetic System of 1984 (WGS84) Projection and
1 000-meter grid; Universal Transverse Mercator, Zone 11T
10 000-foot ticks; Nevada Coordinate System of 1983 (east zone)

Imagery:.....NAP, July 2010
Roads:.....©2006-2011, TomTom
Names:.....GNS, 2011
Hydrography:.....National Hydrography Dataset, 2010
Contours:.....National Elevation Dataset, 1999
Boundaries:.....Census, IBWC, IBC, USGS, 1972 - 2010



CONTOUR INTERVAL 20 FEET
NORTH AMERICAN VERTICAL DATUM OF 1988

This map was produced to conform with the National Geospatial Program US Topo Product Standard, 2011. A metadata file associated with this product is draft version 0.6.1



WEST OF LEE, NV
2012