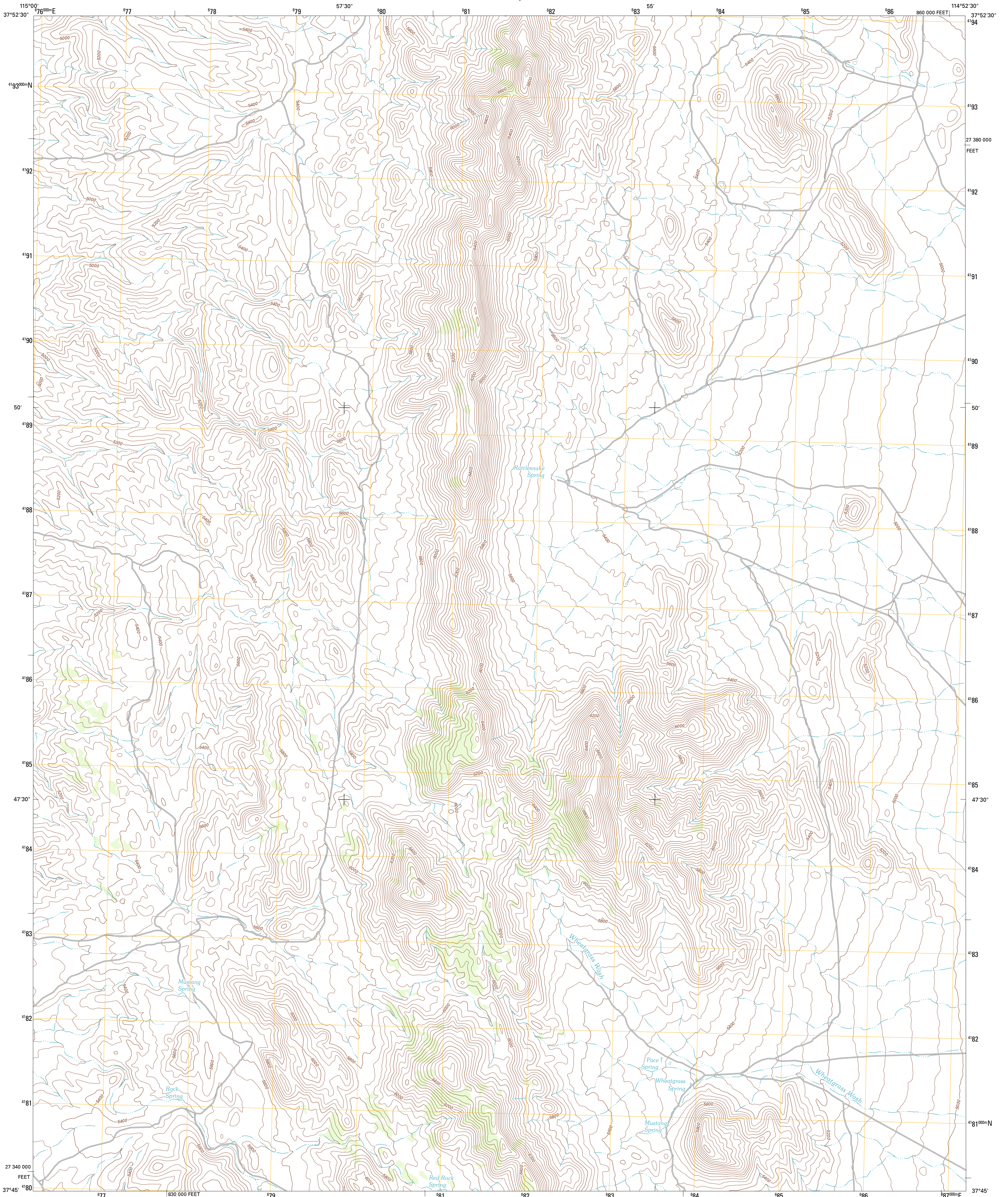




U.S. DEPARTMENT OF THE INTERIOR  
U. S. GEOLOGICAL SURVEY

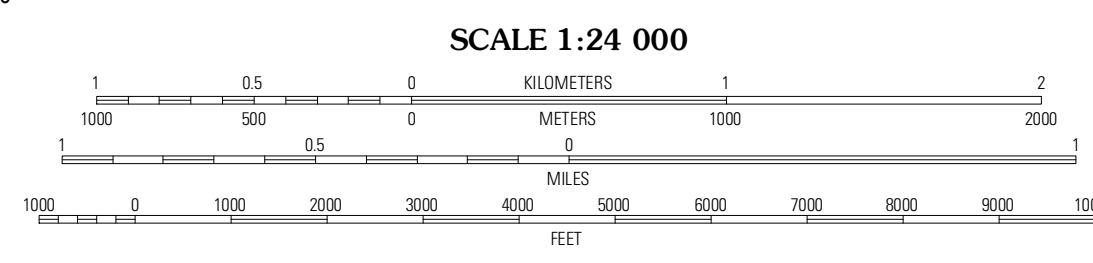
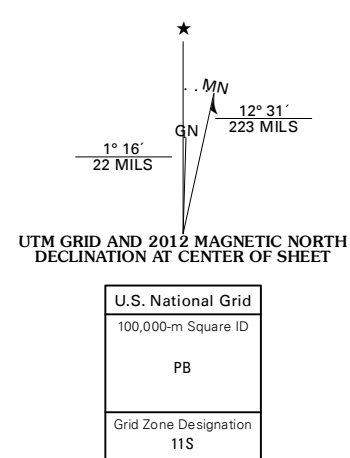


WHEATGRASS SPRING QUADRANGLE  
NEVADA-LINCOLN CO.  
7.5-MINUTE SERIES

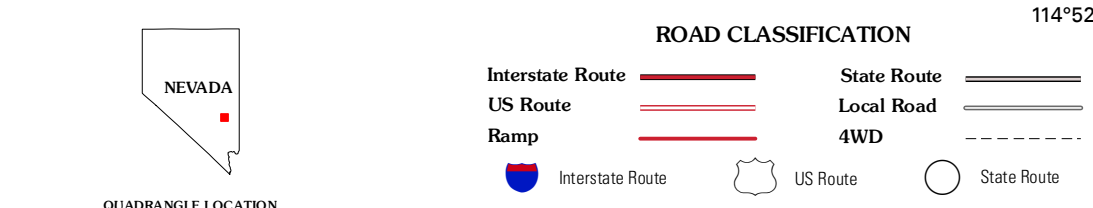


Produced by the United States Geological Survey  
North American Datum of 1983 (NAD83)  
World Geodetic System of 1984 (WGS84). Projection and  
1 000-meter grid: Universal Transverse Mercator, Zone 11S  
10 000-foot ticks: Nevada Coordinate System of 1983 (east zone)

Imagery.....NAIP, May 2010 - July 2010  
Roads.....©2006-2011 TomTom  
Names.....National Hydrography Dataset, 2011  
Hydrography.....National Hydrography Dataset, 2010  
Contours.....National Elevation Dataset, 2005  
Boundaries.....Census, IBWC, IBC, USGS, 1972 - 2010



CONTOUR INTERVAL 40 FEET  
NORTH AMERICAN VERTICAL DATUM OF 1988  
This map was produced to conform with the  
National Geospatial Program US Topo Product Standard, 2011.  
A metadata file associated with this product is draft version 0.6.1



QUADRANGLE LOCATION

Weepah Spring	Deadman Spring	Deadman Spring NE
White River Narrows	Wheatgrass Spring	Deadman Spring SE
Hiko NE	Pahroc Spring	Pahroc Spring NE

WHEATGRASS SPRING, NV  
2012

ADJOINING 7.5' QUADRANGLES