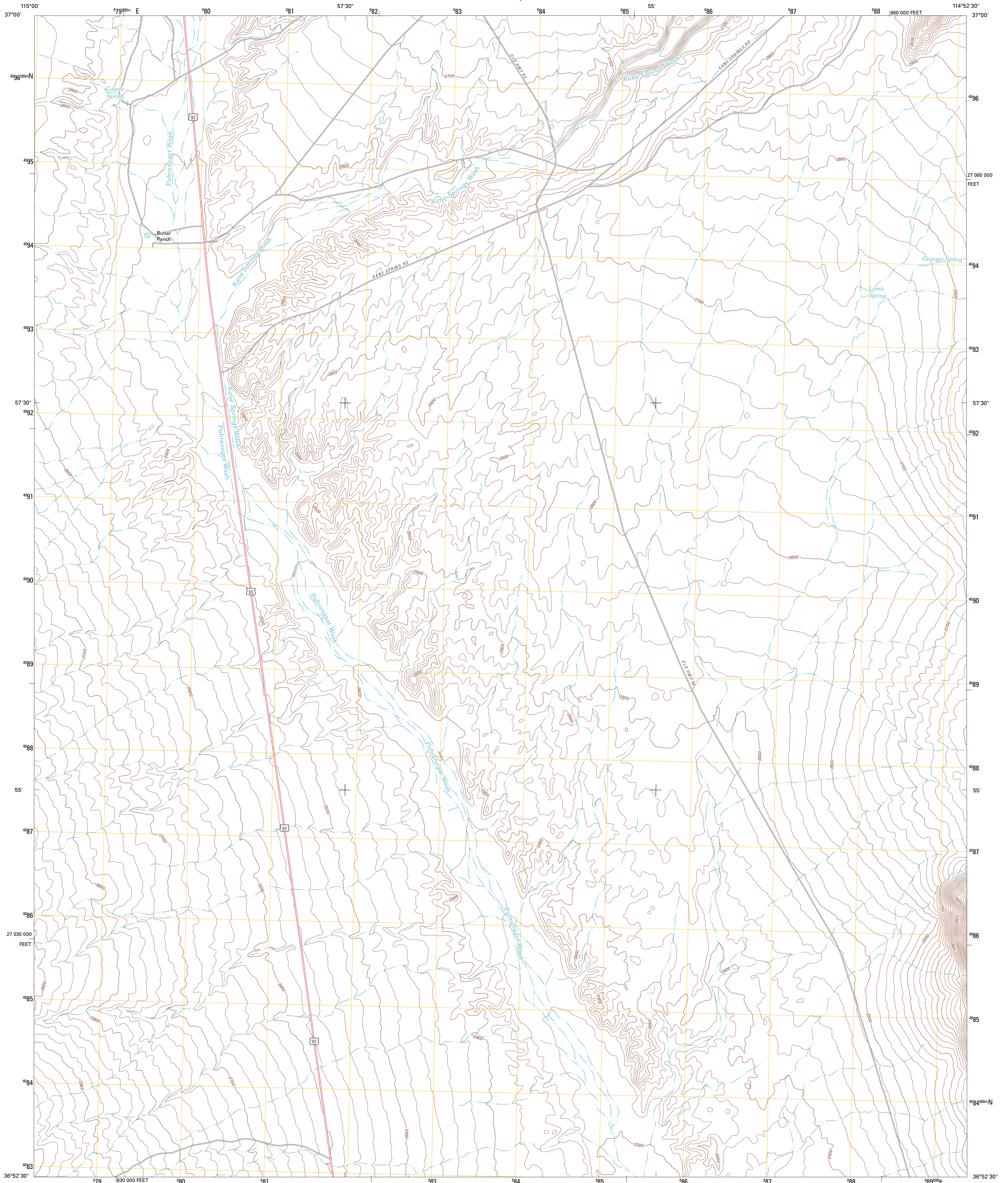




U.S. DEPARTMENT OF THE INTERIOR
U. S. GEOLOGICAL SURVEY

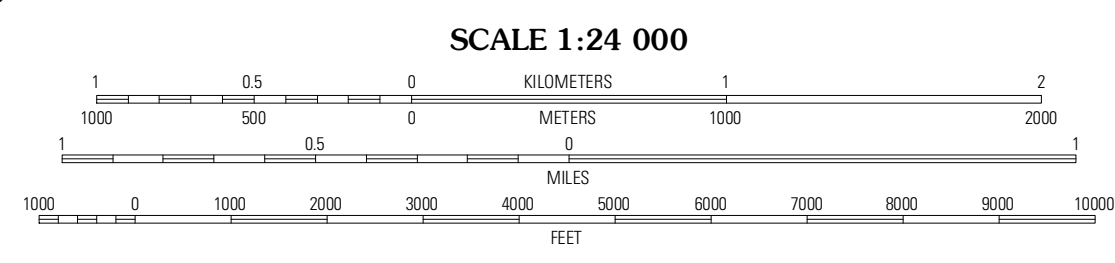
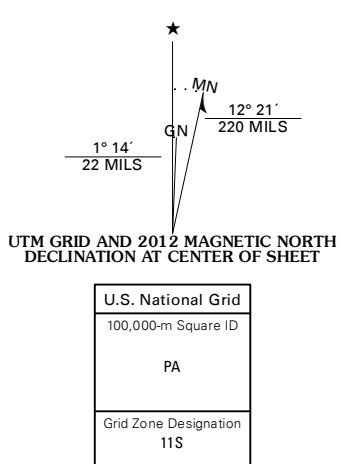


WILDCAT WASH NW QUADRANGLE
NEVADA-LINCOLN CO.
7.5-MINUTE SERIES

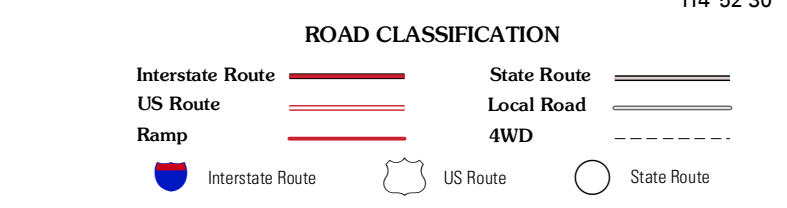
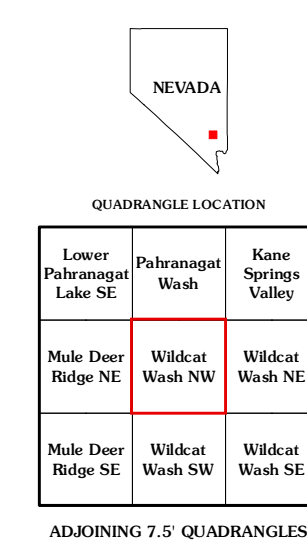


Produced by the United States Geological Survey
North American Datum of 1983 (NAD83)
World Geodetic System of 1984 (WGS84) Projection and
1 000-meter grid: Universal Transverse Mercator, Zone 11S
10 000-foot ticks: Nevada Coordinate System of 1983 (east zone)

Imagery.....NAIP, July 2010
Roads.....©2006-2011 TomTom
Names.....GNIS, 2011
Hydrography.....National Hydrography Dataset, 2010
Contours.....National Elevation Dataset, 2001
Boundaries.....Census, IBWC, IBC, USGS, 1972 - 2010



CONTOUR INTERVAL 20 FEET
NORTH AMERICAN VERTICAL DATUM OF 1988
This map was produced to conform with the
National Geospatial Program US Topo Product Standard, 2011.
A metadata file associated with this product is draft version 0.6.1



WILDCAT WASH NW, NV
2012

QUADRANGLE LOCATION

Lower Pahranagat Lake SE	Pahranagat Wash	Kane Springs Valley
Mule Deer Ridge NE	Wildcat Wash NW	Wildcat Wash NE
Mule Deer Ridge SE	Wildcat Wash SW	Wildcat Wash SE

ADJOINING 7.5' QUADRANGLES