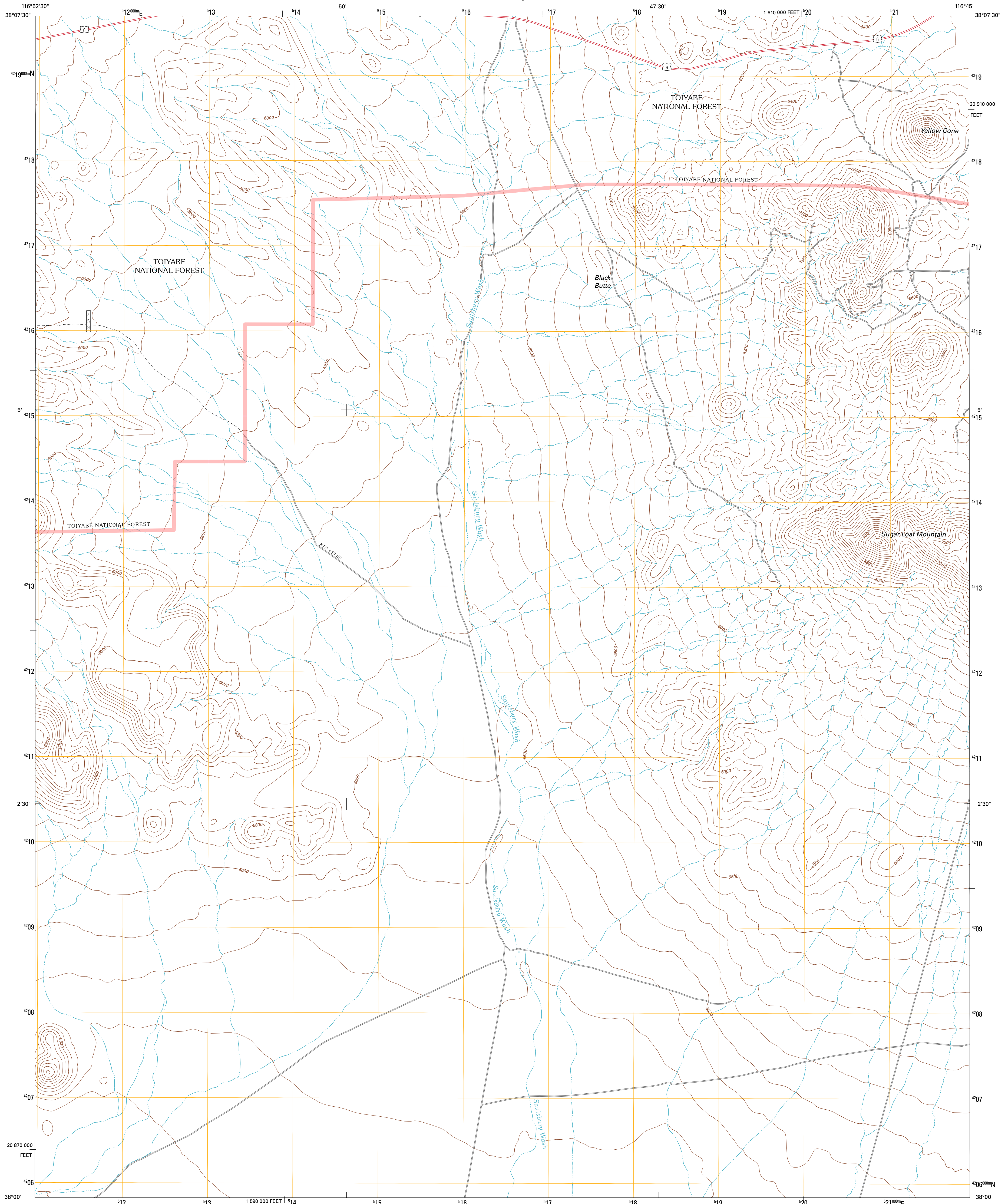




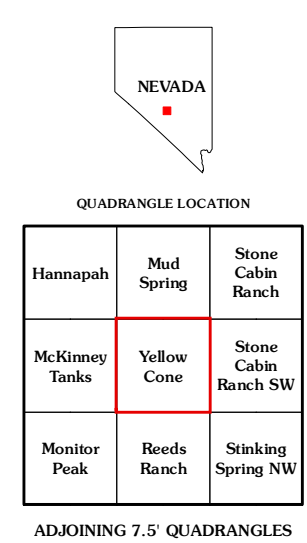
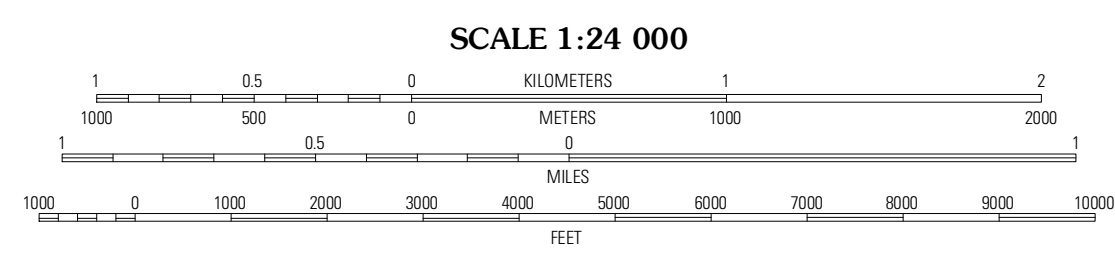
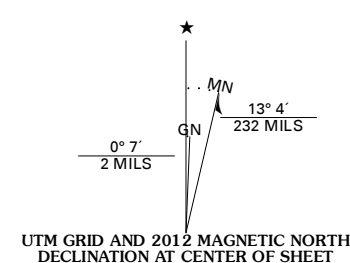
U.S. DEPARTMENT OF THE INTERIOR  
U. S. GEOLOGICAL SURVEY



YELLOW CONE QUADRANGLE  
NEVADA-NYE CO.  
7.5-MINUTE SERIES



Produced by the United States Geological Survey  
North American Datum of 1983 (NAD83)  
World Geodetic System of 1984 (WGS84) Projection and  
1 000-meter grid: Universal Transverse Mercator, Zone 11S  
10 000-foot ticks: Nevada Coordinate System of 1983  
(central zone)



**ROAD CLASSIFICATION**

Interstate Route (thick red line)  
US Route (red line)  
Ramp (red line with blue triangle)  
State Route (thin red line)  
Local Road (grey line)  
4WD (dashed grey line)

FS Primary Route (blue line with square)  
US Route (grey line with circle)  
FS Passenger Route (grey line with square)  
State Route (grey line with circle)  
FS High Clearance Route (grey line with square)

Check with local Forest Service unit for current travel conditions and restrictions.

Imagery: NIP, June 2010 - July 2010  
Roads: ©2006-2011 TomTom  
Roads within US Forest Service Lands: FSTopo Data with limited Forest Service updates, 2009  
Names: GNS, 2011  
Hydrography: National Hydrography Dataset, 2010  
Contours: National Elevation Dataset, 2001  
Boundaries: Census, IBWC, IBC, USGS, 1972 - 2010

U.S. National Grid  
100,000-m Square ID  
NC  
Grid Zone Designation  
11S

CONTOUR INTERVAL 40 FEET  
NORTH AMERICAN VERTICAL DATUM OF 1988

This map was produced to conform with the National Geospatial Program US Topo Product Standard, 2011. A metadata file associated with this product is draft version 0.6.1

YELLOW CONE, NV  
2012