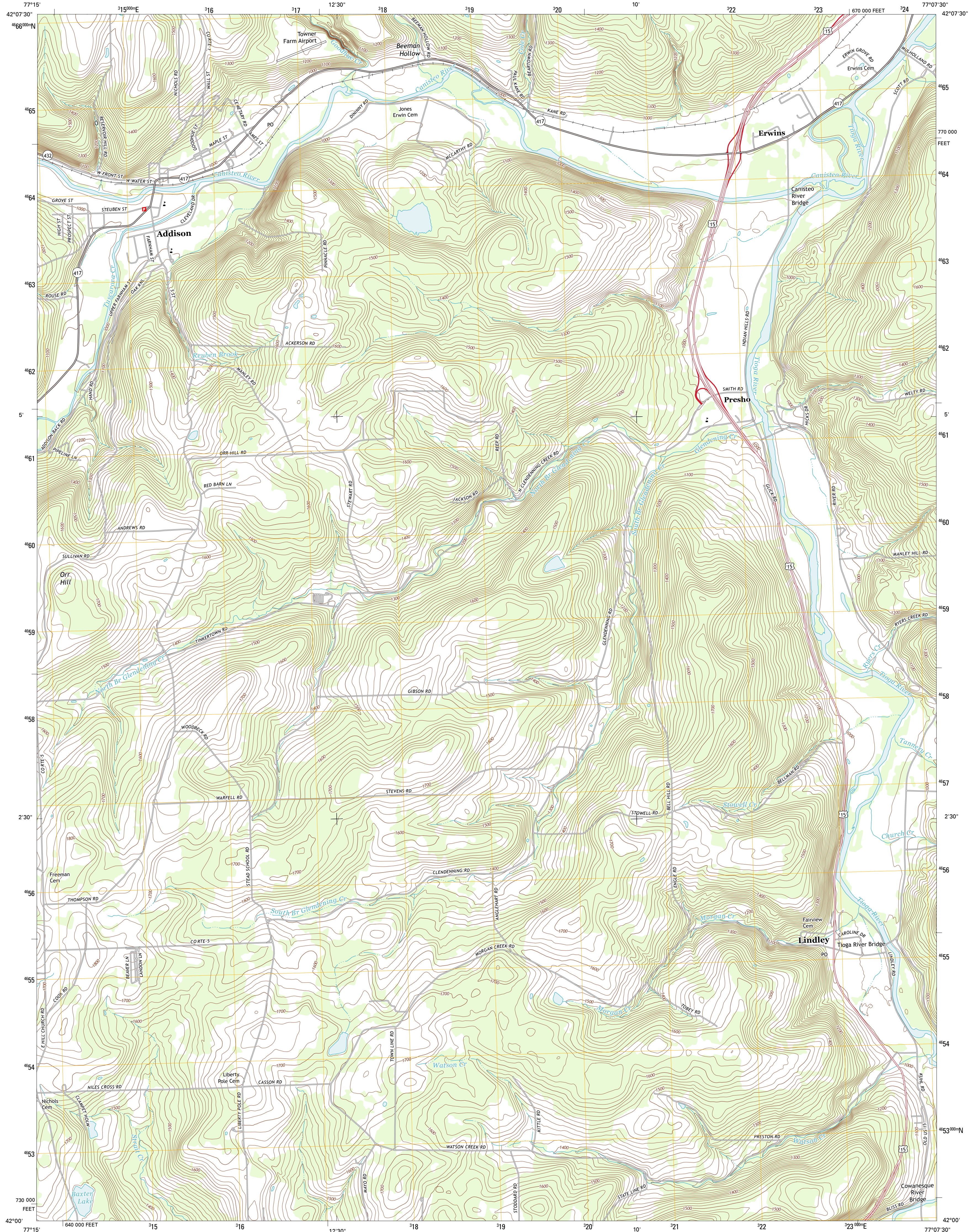




U.S. DEPARTMENT OF THE INTERIOR  
U. S. GEOLOGICAL SURVEY

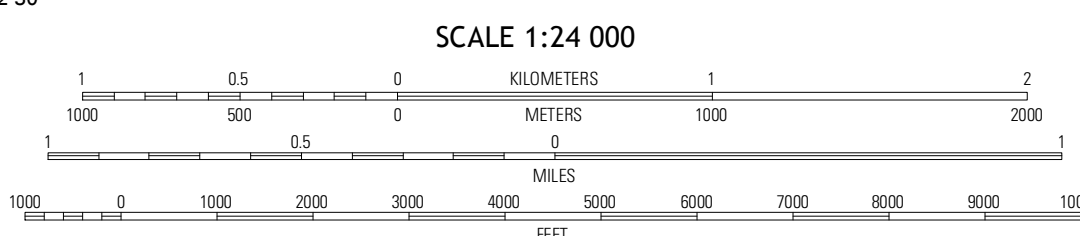
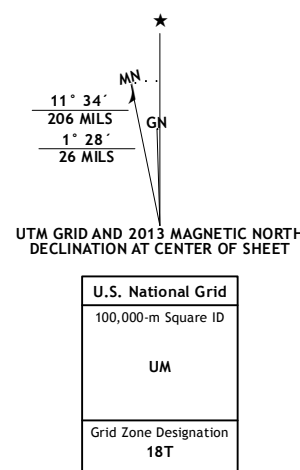


ADDISON QUADRANGLE  
NEW YORK-STEUBEN CO.  
7.5-MINUTE SERIES



Produced by the United States Geological Survey  
North American Datum of 1983 (NAD83). Projection and  
World Geodetic System of 1984 (WGS84). Projection and  
1 000-meter grid: Universal Transverse Mercator, Zone 18T  
10 000-foot ticks: New York Coordinate System of 1983 (central  
zone)

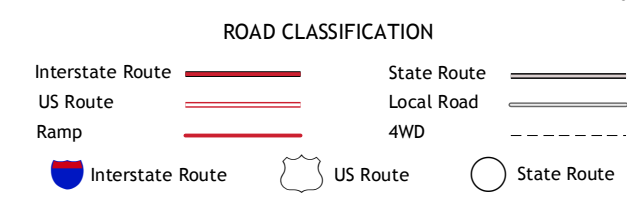
Imagery.....NAIP, June 2011  
Roads.....©2006-2012 TomTom  
Names.....©2006-2012 TomTom  
Hydrography.....National Hydrography Dataset, 2011  
Contours.....National Elevation Dataset, 1998  
Boundaries.....Census, IBW, IBC, USGS, 1972 - 2012



QUADRANGLE LOCATION

Bathone	Campbell	Corning
Borden	Addison	Caton
Elkland	Tioga	Jackson Summit

ADJOINING 7.5' QUADRANGLES



ADDISON, NY  
2013