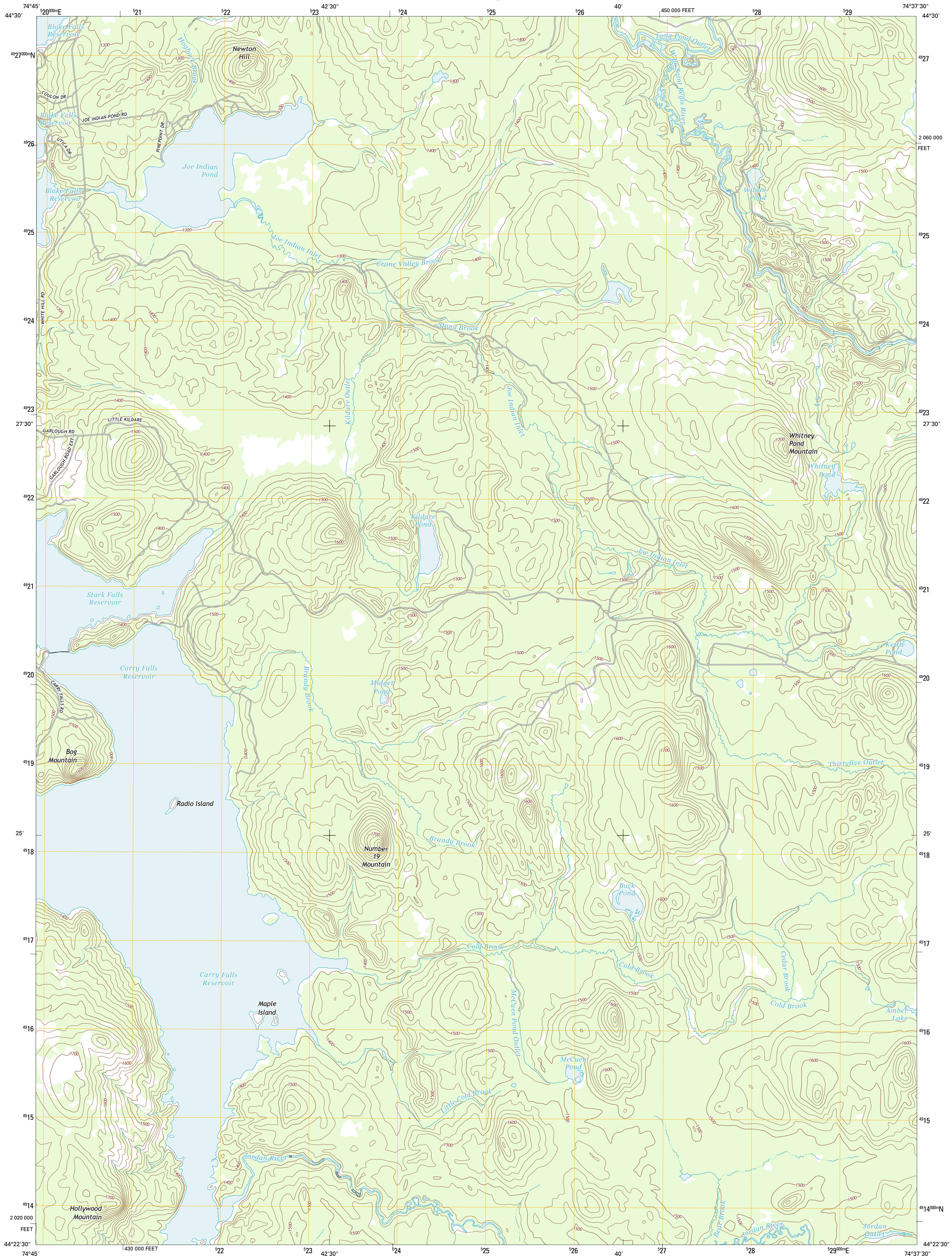




U.S. DEPARTMENT OF THE INTERIOR
U. S. GEOLOGICAL SURVEY

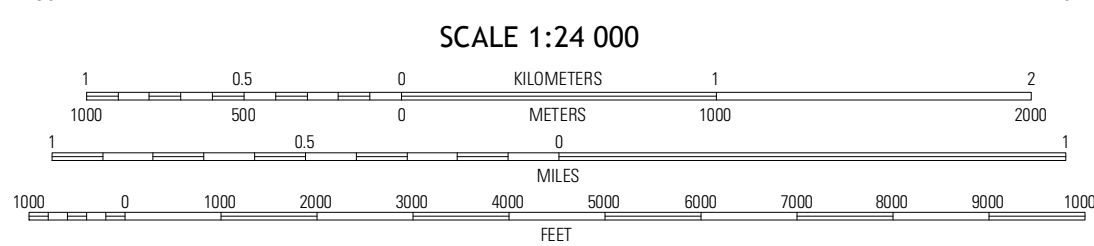
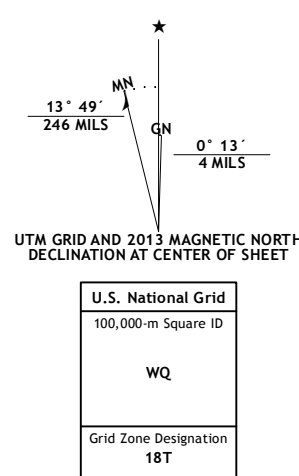


CARRY FALLS RESERVOIR QUADRANGLE
NEW YORK-ST. LAWRENCE CO.
7.5-MINUTE SERIES



Produced by the United States Geological Survey
North American Datum of 1983 (NAD83). Projection and
World Geodetic System of 1984 (WGS84). Projection and
1 000-meter grid: Universal Transverse Mercator, Zone 18T
10 000-foot ticks: New York Coordinate System of 1983 (east
zone)

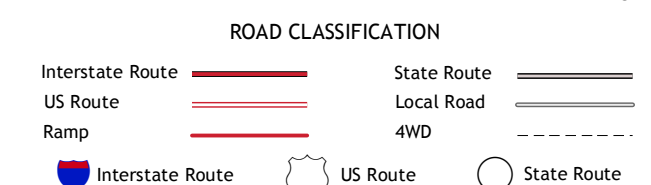
Imagery.....NAIP, September 2011
Roads.....©2006-2012 TomTom
Names.....©2006-2012 TomTom
Hydrography.....National Hydrography Dataset, 2011
Contours.....National Elevation Dataset, 1999
Boundaries.....Census, IBWC, IBC, USGS, 1972 - 2012



QUADRANGLE LOCATION

Rainbow Falls	Sylvan Falls	Lake Ontario
Stark	Carry Falls Reservoir	Amberhole Falls
Weather Ponds	Childsford	Mount Matumbula

ADJOINING 7.5' QUADRANGLES



CONTOUR INTERVAL 20 FEET
NORTH AMERICAN VERTICAL DATUM OF 1988

This map was produced to conform with the
National Geospatial Program US Topo Product Standard, 2011.
A metadata file associated with this product is draft version 0.6.7

CARRY FALLS RESERVOIR, NY
2013