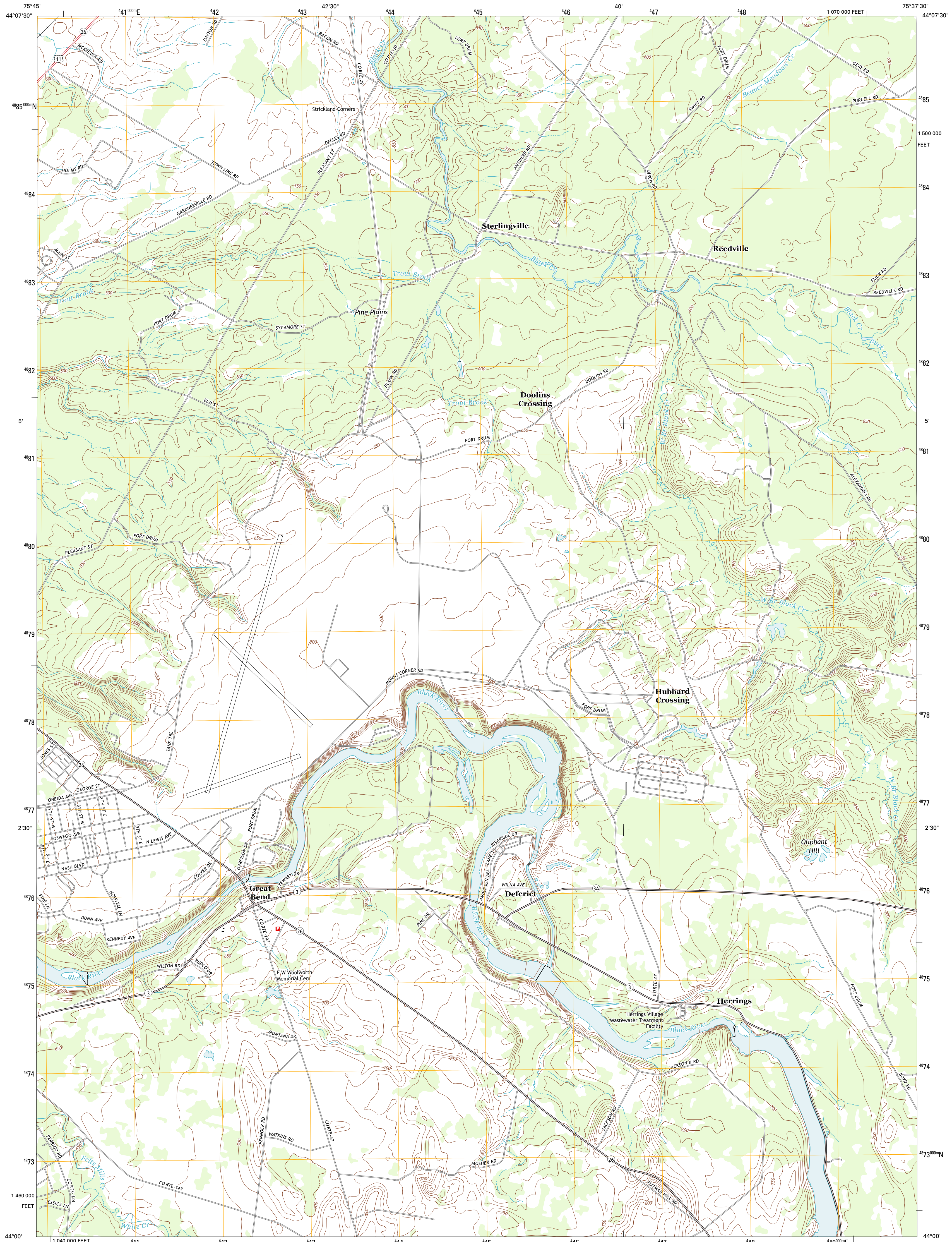




U.S. DEPARTMENT OF THE INTERIOR  
U. S. GEOLOGICAL SURVEY



DEFERIET QUADRANGLE  
NEW YORK-JEFFERSON CO.  
7.5-MINUTE SERIES



Produced by the United States Geological Survey  
 North American Datum of 1983 (NAD83)  
 World Geodetic System of 1984 (WGS84). Projection and 1 000-meter grid: Universal Transverse Mercator, Zone 18T  
 10 000-foot ticks: New York Coordinate System of 1983 (central zone)

Imagery.....NAP, May 2011  
 Roads.....c2006-2012 TomTom  
 Names.....GNIS, 2012  
 Hydrography.....National Hydrography Dataset, 2011  
 Contours.....National Elevation Dataset, 1999  
 Boundaries.....Census, IBWC, IBC, USGS, 1972 - 2012

UTM GRID AND 2013 MAGNETIC NORTH DECLINATION AT CENTER OF SHEET

U.S. National Grid  
 100,000-m Square ID  
 VP  
 Grid Zone Designation  
 18T

SCALE 1:24 000

CONTOUR INTERVAL 10 FEET  
 NORTH AMERICAN VERTICAL DATUM OF 1988

This map was produced to conform with the National Geospatial Program US Topo Product Standard, 2011. A metadata file associated with this product is draft version 0.6.7

ROAD CLASSIFICATION

Interstate Route  
 US Route  
 Ramp  
 State Route  
 Local Road  
 4WD  
 Interstate Route  
 US Route  
 State Route

QUADRANGLE LOCATION

Theresa	Philadelphia	Ashvcp
Black River	Deferiet	North Wilna
Rutland Center	Ospreyhaven	Carthage

DEFERIET, NY  
2013

ADJOINING 7.5' QUADRANGLES