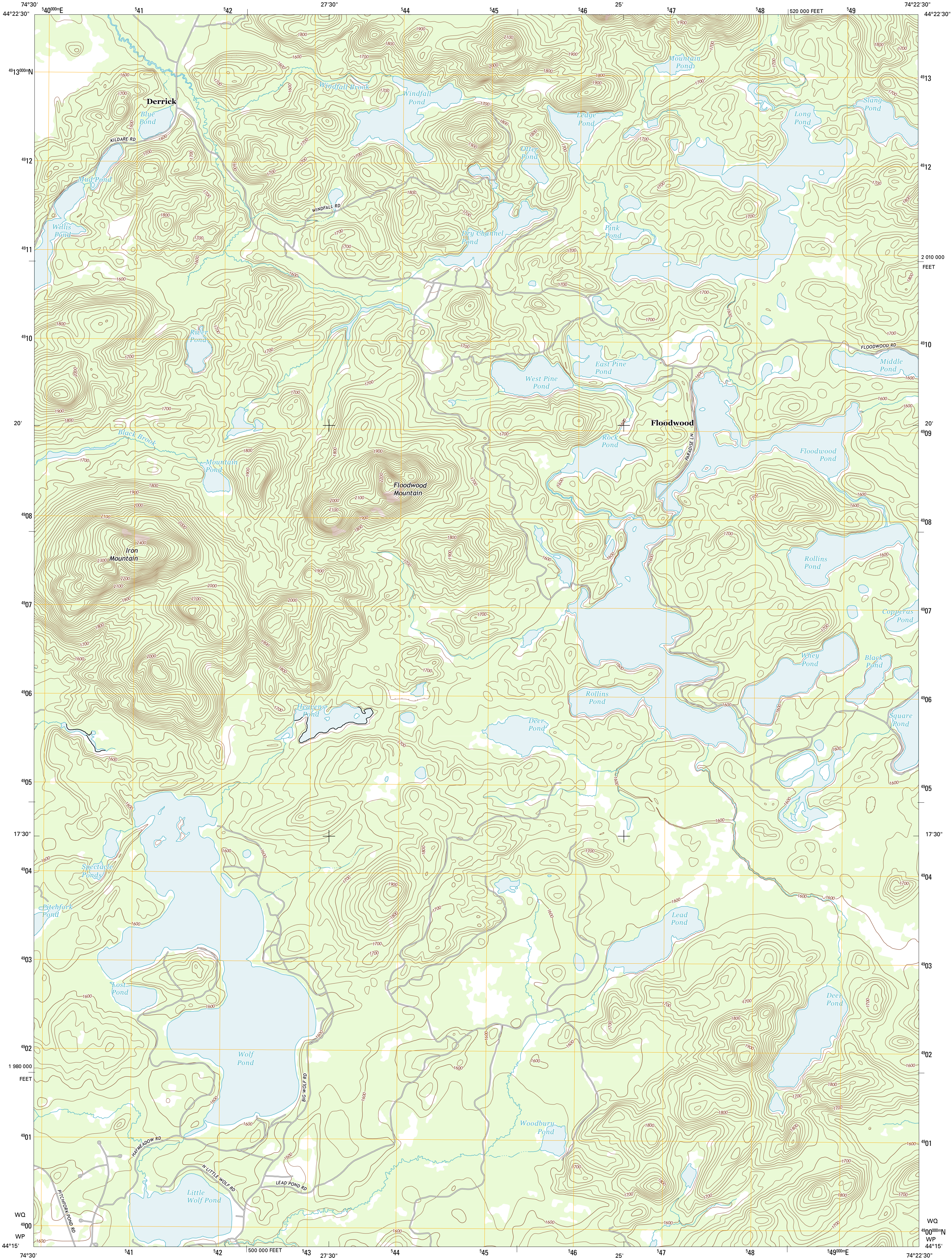




U.S. DEPARTMENT OF THE INTERIOR  
U. S. GEOLOGICAL SURVEY

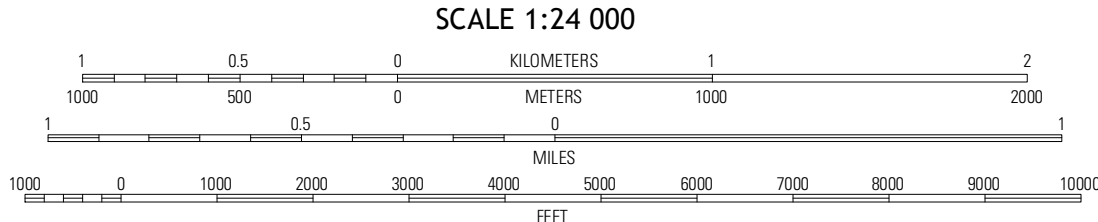
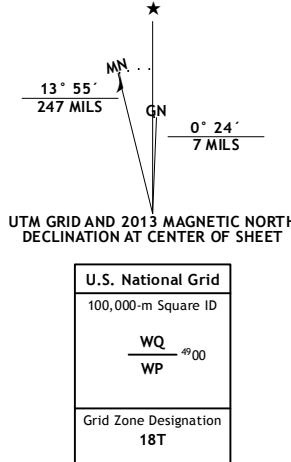


DERRICK QUADRANGLE  
NEW YORK-FRANKLIN CO.  
7.5-MINUTE SERIES



Produced by the United States Geological Survey  
North American Datum of 1983 (NAD83)  
World Geodetic System of 1984 (WGS84). Projection and  
1 000-meter grid: Universal Transverse Mercator, Zone 18T  
10 000-foot ticks: New York Coordinate System of 1983 (east  
zone)

Imagery.....NAIP, September 2011  
Roads.....©2006-2012 TomTom  
Names.....©GNIS, 2012  
Hydrography.....National Hydrography Dataset, 2011  
Contours.....National Elevation Dataset, 1999  
Boundaries.....Census, IBWC, IBC, USGS, 1972 - 2012

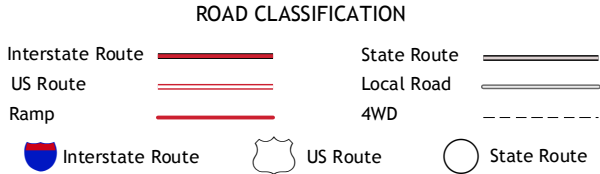


CONTOUR INTERVAL 20 FEET  
NORTH AMERICAN VERTICAL DATUM OF 1988  
This map was produced to conform with the  
National Geospatial Program US Topo Product Standard, 2011.  
A metadata file associated with this product is draft version 0.6.7



Augerhole Falls	Bay Pond	Saint Regis Mountain
Mount Matumbula	Derrick	Upper Saranac Lake
Piercefield	Tupper Lake	Stony Creek Mountain

ADJOINING 7.5' QUADRANGLES



DERRICK, NY  
2013