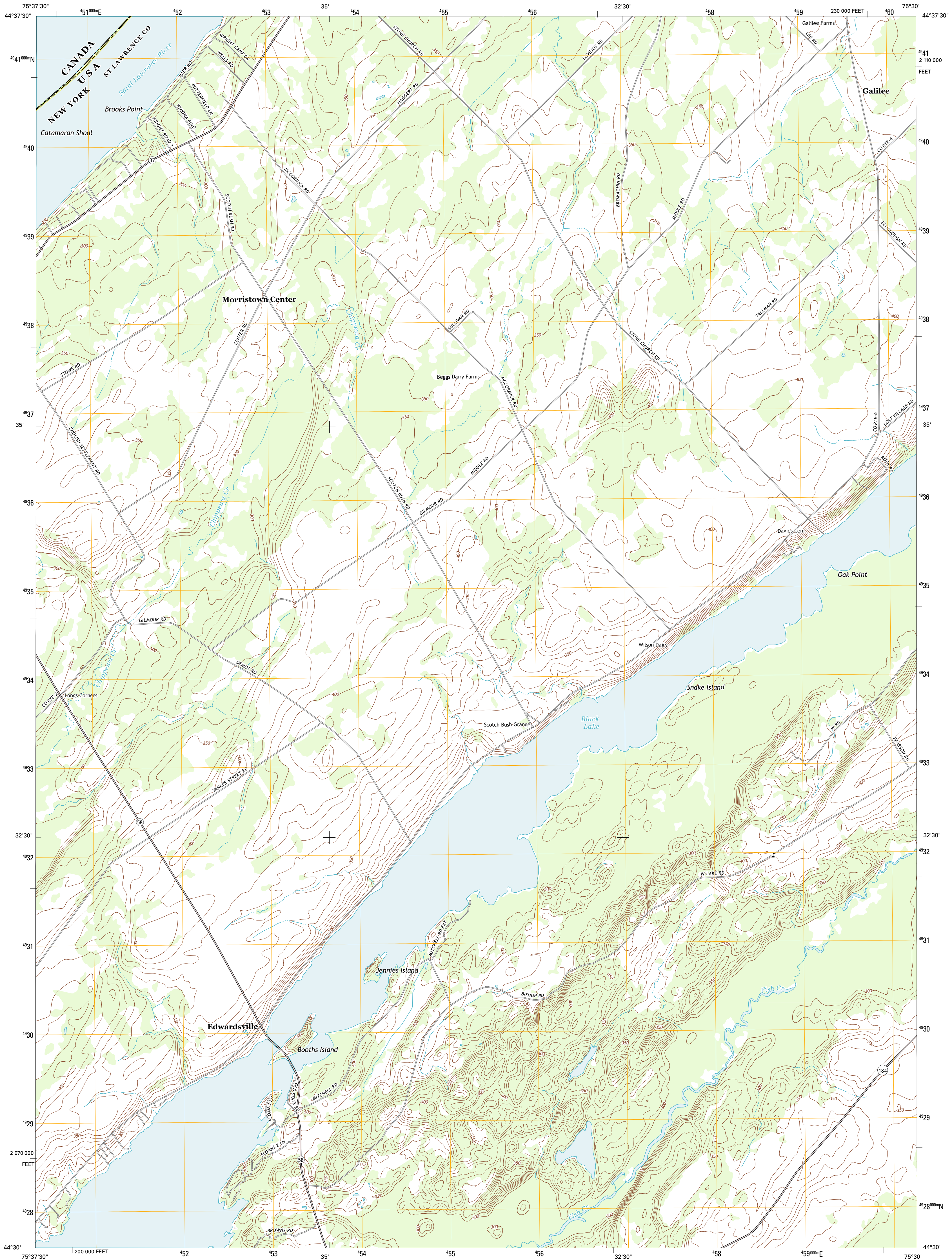




U.S. DEPARTMENT OF THE INTERIOR
U. S. GEOLOGICAL SURVEY

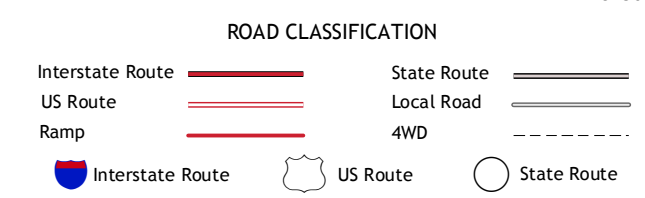
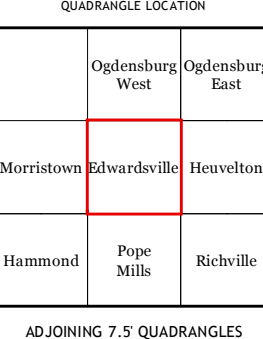
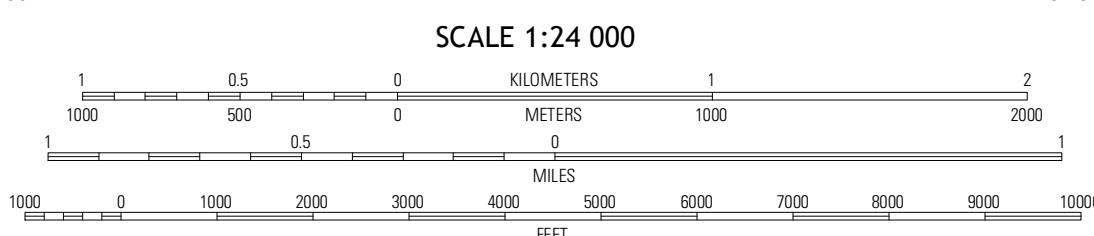
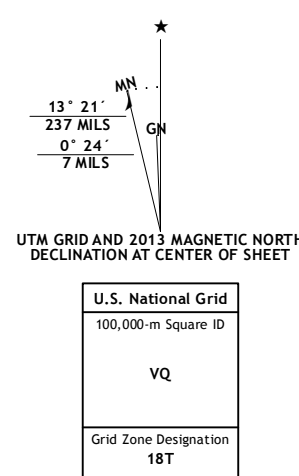


EDWARDSVILLE QUADRANGLE
NEW YORK-ST. LAWRENCE CO.
7.5-MINUTE SERIES



Produced by the United States Geological Survey
 North American Datum of 1983 (NAD83), Projection and 1 000-meter grid: Universal Transverse Mercator, Zone 18T
 10 000-foot ticks: New York Coordinate System of 1983 (east zone)

Imagery.....NAIP, May 2011
 Roads.....©2006-2012 TomTom
 Names.....©2006-2012 TomTom
 Hydrography.....National Hydrography Dataset, 2011
 Contours.....National Elevation Dataset, 1999
 Boundaries.....Census, IBWC, IBC, USGS, 1972 - 2012



CONTOUR INTERVAL 10 FEET
 NORTH AMERICAN VERTICAL DATUM OF 1988

This map was produced to conform with the National Geospatial Program US Topo Product Standard, 2011.
 A metadata file associated with this product is draft version 0.6.7

EDWARDSVILLE, NY
 2013