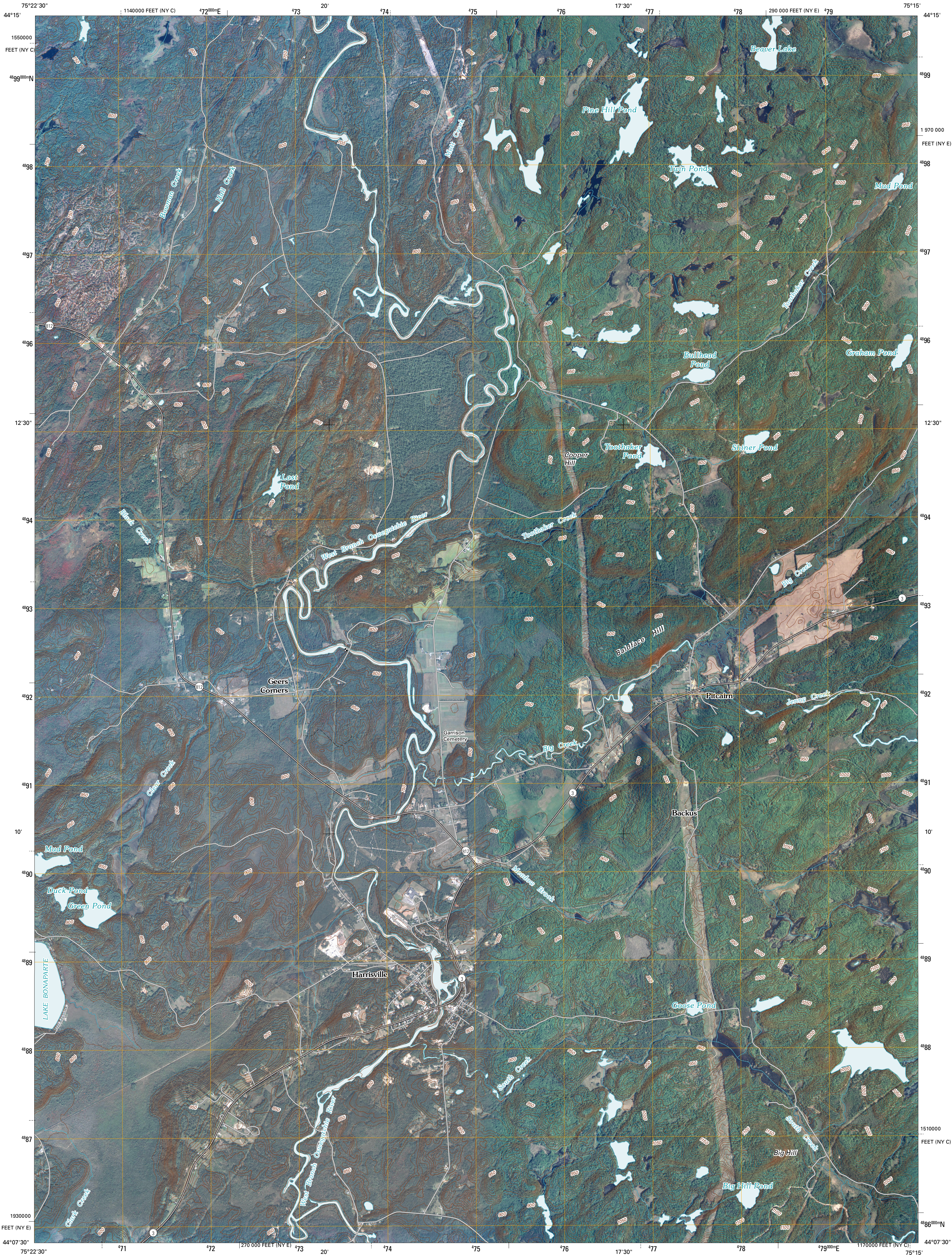




U.S. DEPARTMENT OF THE INTERIOR
U. S. GEOLOGICAL SURVEY



HARRISVILLE QUADRANGLE
NEW YORK
7.5-MINUTE SERIES



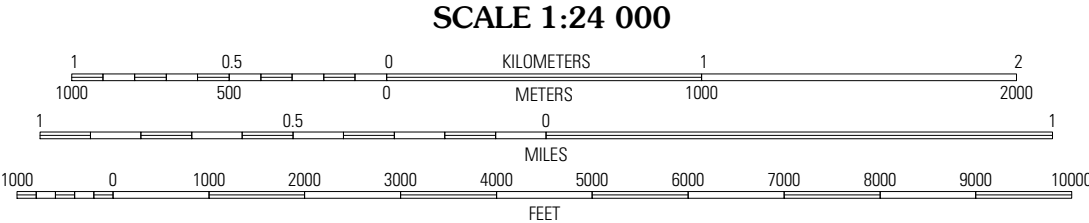
Produced by the United States Geological Survey
North American Datum of 1983 (NAD83)
World Geodetic System of 1984 (WGS84). Projection and
1 000-meter grid: Universal Transverse Mercator, Zone 18T
10 000-foot ticks: New York Coordinate System of 1983
(east and central zones)

Imagery.....NAIP, May 2008 - September 2008
Roads.....US Census Bureau TIGER data
with limited USGS updates, 2006 - 2007
Name.....GNIS, 2008
Hydrography.....National Hydrography Dataset, 2008
Contours.....National Elevation Dataset, 1999

UTM GRID AND 2010 MAGNETIC NORTH
DECLINATION AT CENTER OF SHEET

13° 24' N
238 MILS
0° 13' N
4 MILS

U.S. National Grid
100,000-m Square ID
VP
Grid Zone Designation
18T



CONTOUR INTERVAL 10 FEET

This map was produced to conform with version 0.5.10 of the
draft USGS Standards for 7.5-Minute Quadrangle Maps.
A metadata file associated with this product is also draft version 0.5.10



Gouverneur	Edwards	South Edwards
Lake Bonaparte	Harrisville	Fine
Natural Bridge	Remington Corners	Oswegatchie SW

ADJOINING 7.5' QUADRANGLES

ROAD CLASSIFICATION

Interstate Route
US Route
Ramp

State Route
Local Road
4WD

HARRISVILLE, NY
2010