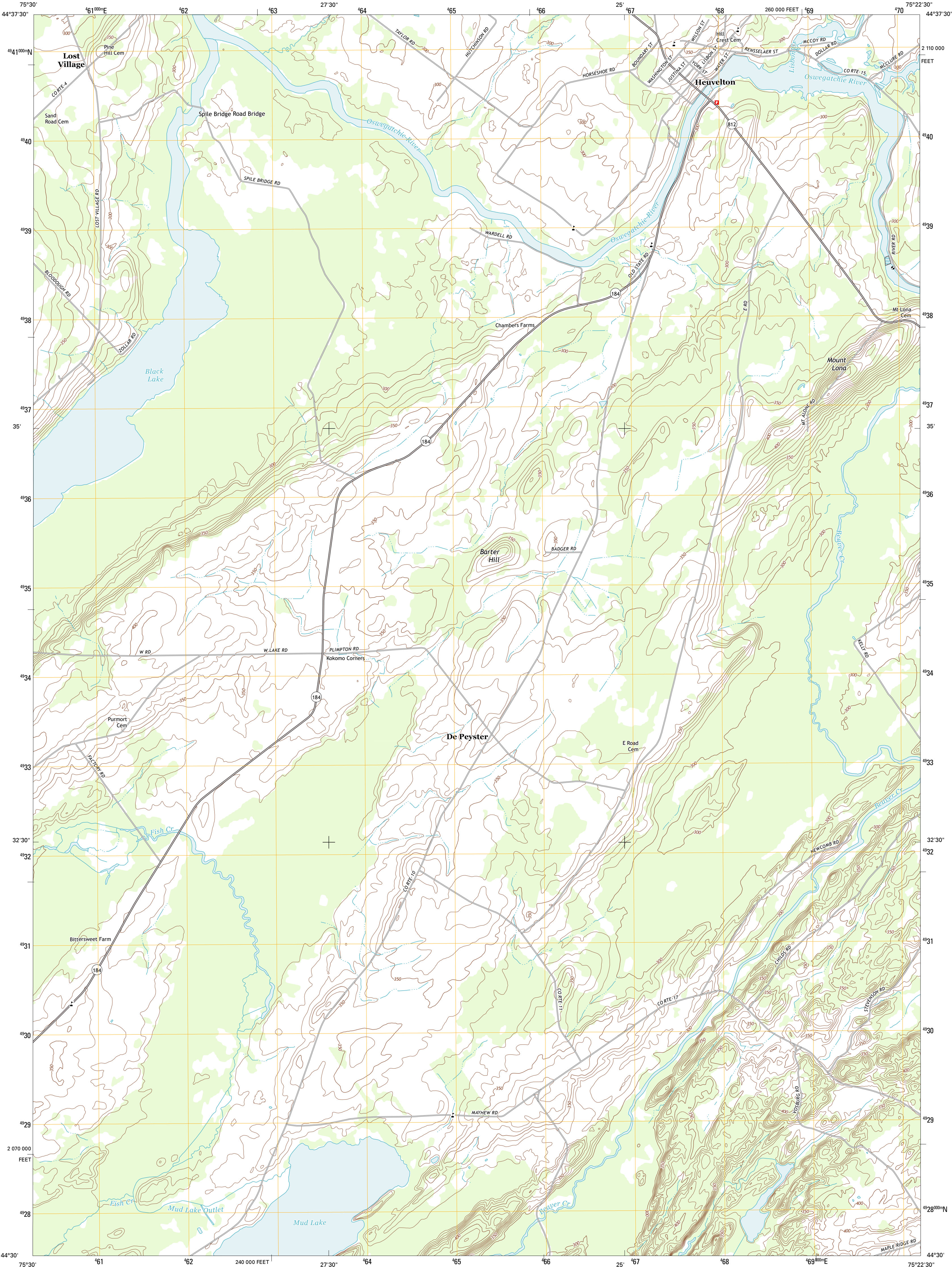




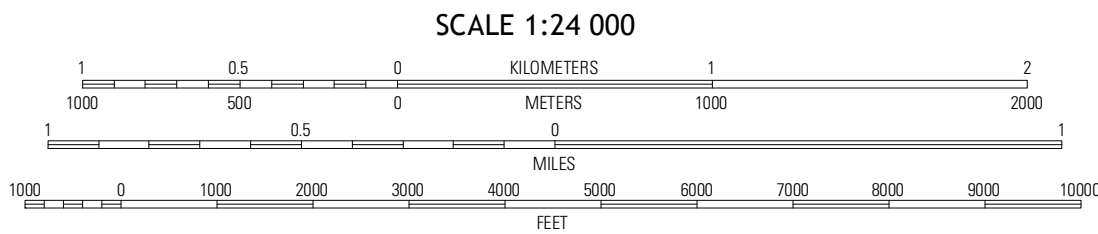
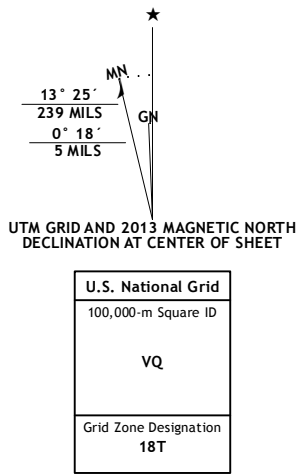
U.S. DEPARTMENT OF THE INTERIOR
U. S. GEOLOGICAL SURVEY



HEUVELTON QUADRANGLE
NEW YORK-ST. LAWRENCE CO.
7.5-MINUTE SERIES



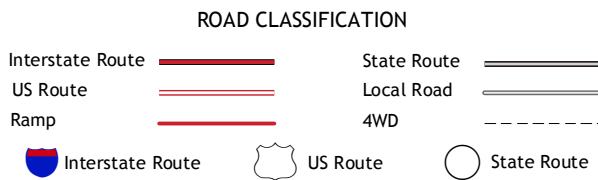
Produced by the United States Geological Survey
North American Datum of 1983 (NAD83)
World Geodetic System of 1984 (WGS84). Projection and
1 000-meter grid: Universal Transverse Mercator, Zone 18T
10 000-foot ticks: New York Coordinate System of 1983 (east
zone)
Imagery.....NAIP, May 2011
Roads.....©2006-2012 TomTom
Names.....©GNS, 2012
Hydrography.....National Hydrography Dataset, 2011
Contours.....National Elevation Dataset, 1999
Boundaries.....Census, IBWC, IBC, USGS, 1972 - 2012



CONTOUR INTERVAL 10 FEET
NORTH AMERICAN VERTICAL DATUM OF 1988
This map was produced to conform with the
National Geospatial Program US Topo Product Standard, 2011.
A metadata file associated with this product is draft version 0.6.7



Ogdenburg West	Ogdenburg East	Lakewood
Edwardsville	Heuvelton	Remondville
Pope Mills	Richville	Bigelow



HEUVELTON, NY
2013