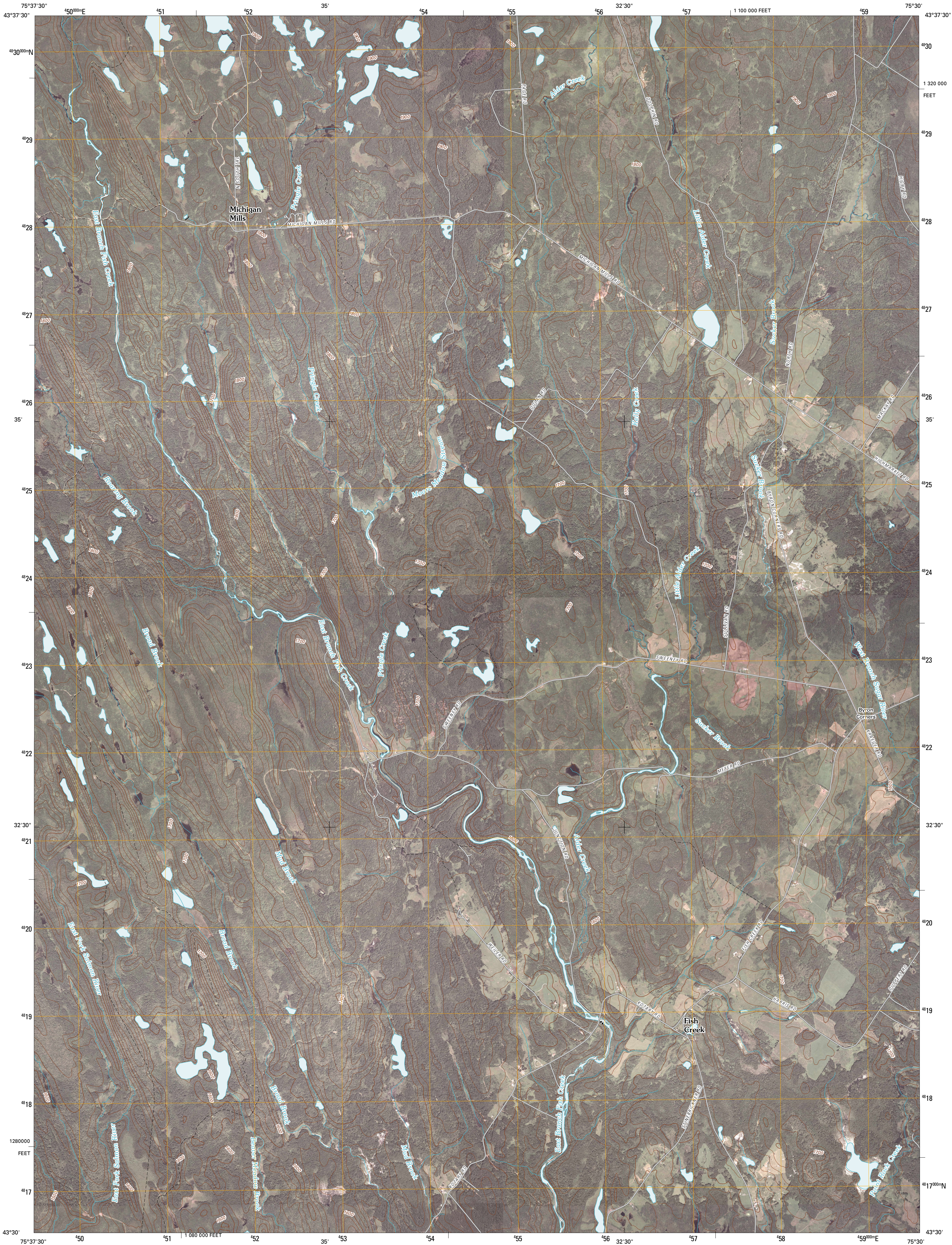




U.S. DEPARTMENT OF THE INTERIOR  
U. S. GEOLOGICAL SURVEY



HIGH MARKET QUADRANGLE  
NEW YORK  
7.5-MINUTE SERIES



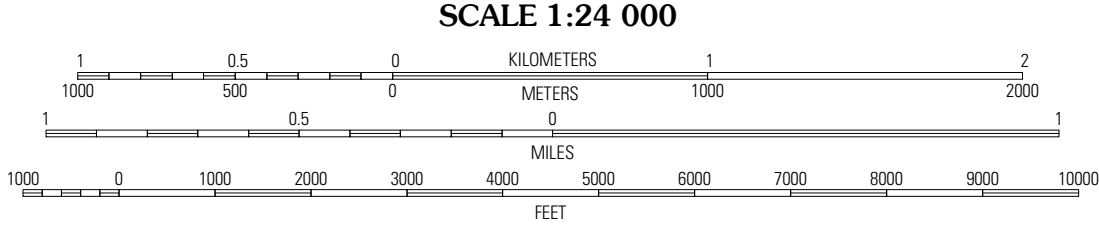
Produced by the United States Geological Survey  
North American Datum of 1983 (NAD83)  
World Geodetic System of 1984 (WGS84). Projection and  
1 000-meter grid: Universal Transverse Mercator, Zone 18T  
10 000-foot ticks: New York Coordinate System of 1983  
(central zone)

Imagery.....NAIP, July 2006  
Roads.....US Census Bureau TIGER data  
with limited USGS updates, 2007  
Names.....GNIS, 2008  
Hydrography.....National Hydrography Dataset, 2006  
Contours.....National Elevation Dataset, 1998

UTM GRID AND 2010 MAGNETIC NORTH  
DECLINATION AT CENTER OF SHEET

13° 2'  
232 MILS  
0° 23'  
7 MILS

U.S. National Grid  
100,000-m Square ID  
VP  
Grid Zone Designation  
18T



CONTOUR INTERVAL 20 FEET

This map was produced to conform with version 0.5.10 of the  
draft USGS Standards for 7.5-Minute Quadrangle Maps.  
A metadata file associated with this product is also draft version 0.5.10



QUADRANGLE LOCATION			
Sears Pond	Page	Glenfield	
North Oscoda	High Market	Constableville	
Florence	Point Rock	West Leyden	

ADJOINING 7.5' QUADRANGLES

ROAD CLASSIFICATION

Interstate Route  
US Route  
Ramp

State Route  
Local Road  
4WD

HIGH MARKET, NY  
2010