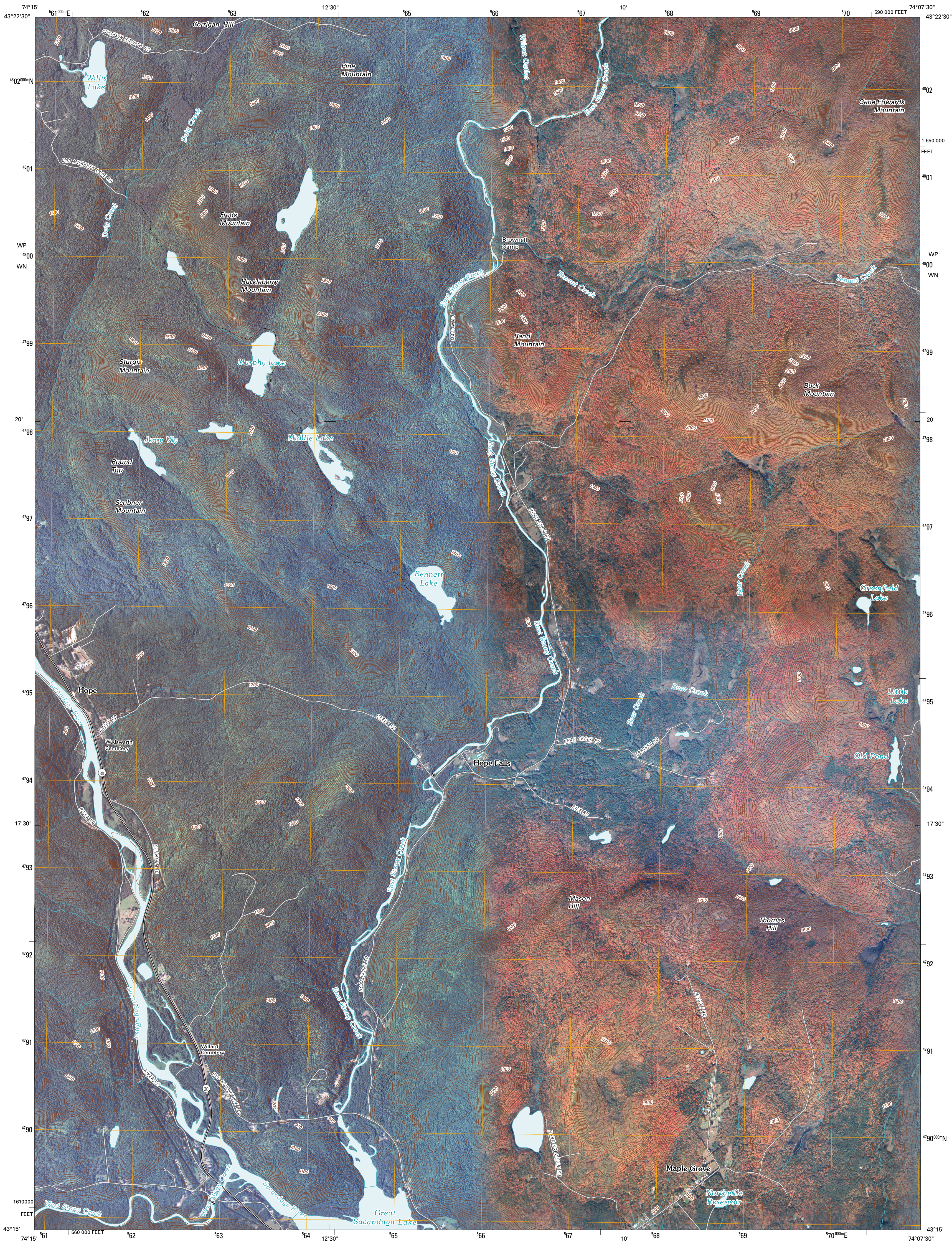




U.S. DEPARTMENT OF THE INTERIOR
U. S. GEOLOGICAL SURVEY

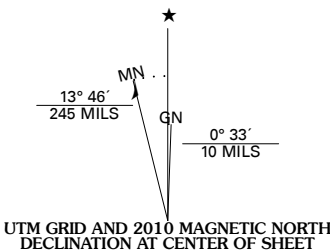


HOPE FALLS QUADRANGLE
NEW YORK
7.5-MINUTE SERIES

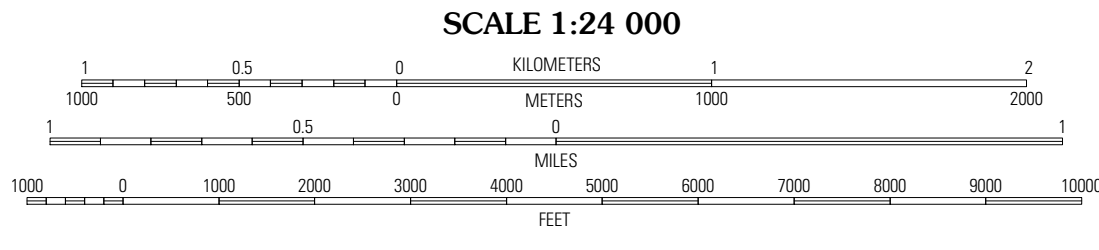


Produced by the United States Geological Survey
North American Datum of 1983 (NAD83)
World Geodetic System of 1984 (WGS84). Projection and
1 000-meter grid: Universal Transverse Mercator, Zone 18T
10 000-foot ticks: New York Coordinate System of 1983
(east zone)

Imagery.....NAIP, July 2008 - October 2008
Roads.....US Census Bureau TIGER data
with limited USGS updates, 2006 - 2007
Names.....GNIS, 2008
Hydrography.....National Hydrography Dataset, 2008
Contours.....National Elevation Dataset, 1998



U.S. National Grid
100,000m Square ID
WP 48
WN
Grid Zone Designation
18T



SCALE 1:24 000

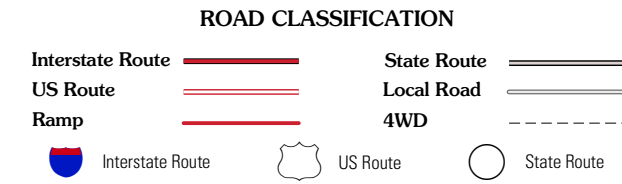
CONTOUR INTERVAL 20 FEET

This map was produced to conform with version 0.5.10 of the
draft USGS Standards for 7.5-Minute Quadrangle Maps.
A metadata file associated with this product is also draft version 0.5.10



QUADRANGLE LOCATION		
Wells	Griffin	Harrisburg
Carhead Mountain	Hope Falls	Ohmer Mountain
Jackson Summit	Northville	Edinburg

ADJOINING 7.5' QUADRANGLES



HOPE FALLS, NY
2010