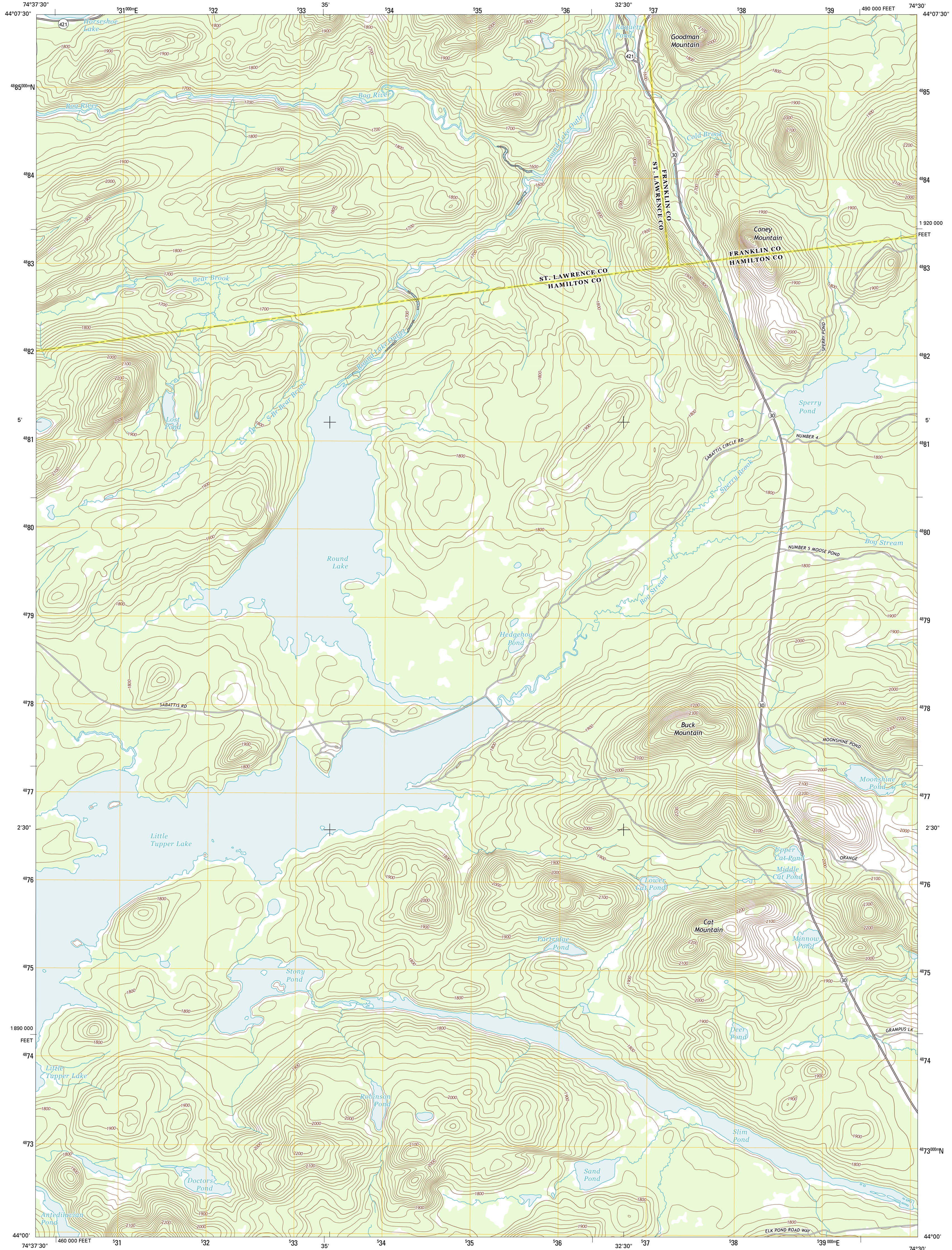




U.S. DEPARTMENT OF THE INTERIOR  
U. S. GEOLOGICAL SURVEY

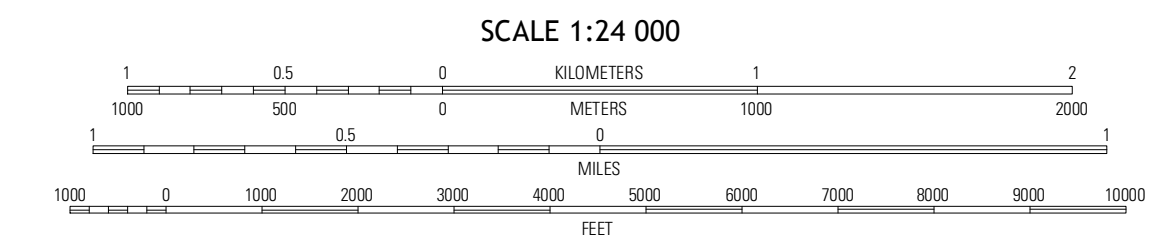
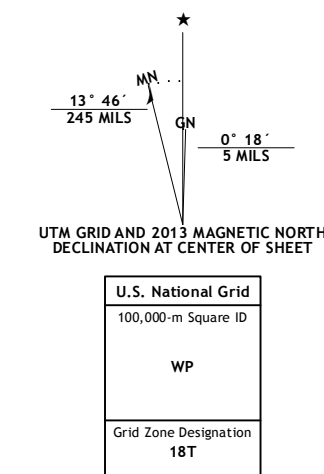


LITTLE TUPPER LAKE QUADRANGLE  
NEW YORK  
7.5-MINUTE SERIES



Produced by the United States Geological Survey  
North American Datum of 1983 (NAD83), Projection and  
World Geodetic System of 1984 (WGS84), Projection and  
1 000-meter grid: Universal Transverse Mercator, Zone 18T  
10 000-foot ticks: New York Coordinate System of 1983 (east  
zone)

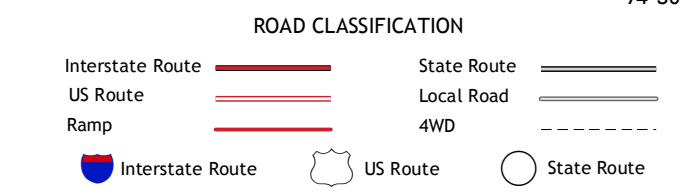
Imagery.....NAIP, September 2011  
Roads.....©2006-2012 TomTom  
Names.....GNS, 2012  
Hydrography.....National Hydrography Dataset, 2011  
Contours.....National Elevation Dataset, 1999  
Boundaries.....Census, IBWC, IBC, USGS, 1972 - 2012



QUADRANGLE LOCATION

Long Tim Mountain	Pierrefield	Tupper Lake
Sabattis	Little Tupper Lake	Orangetown
Brandebuck Lake	Forked Lake	Deerland

ADJOINING 7.5' QUADRANGLES



CONTOUR INTERVAL 20 FEET  
NORTH AMERICAN VERTICAL DATUM OF 1988

This map was produced to conform with the  
National Geospatial Program US Topo Product Standard, 2011.  
A metadata file associated with this product is draft version 0.6.7

LITTLE TUPPER LAKE, NY  
2013