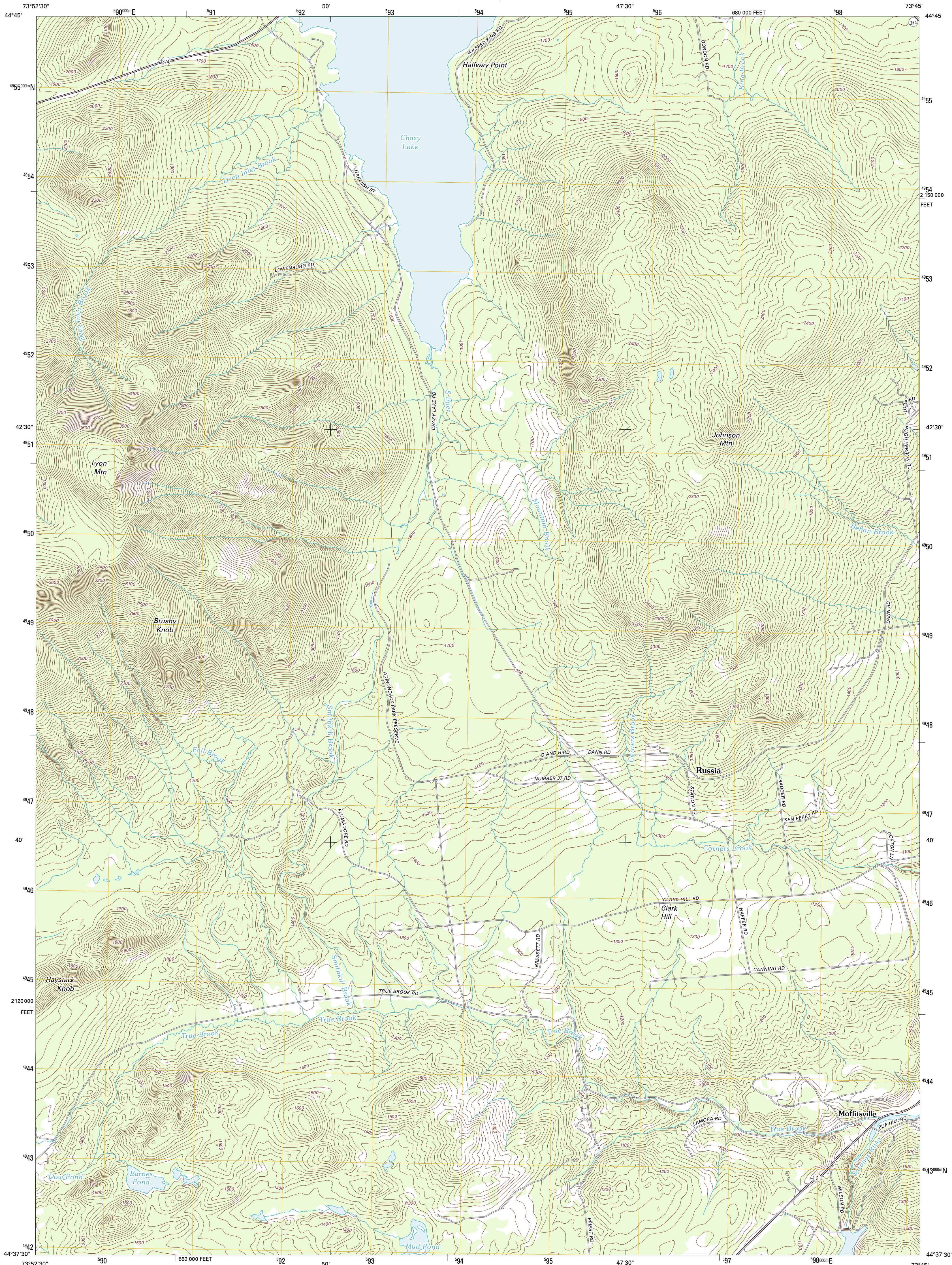




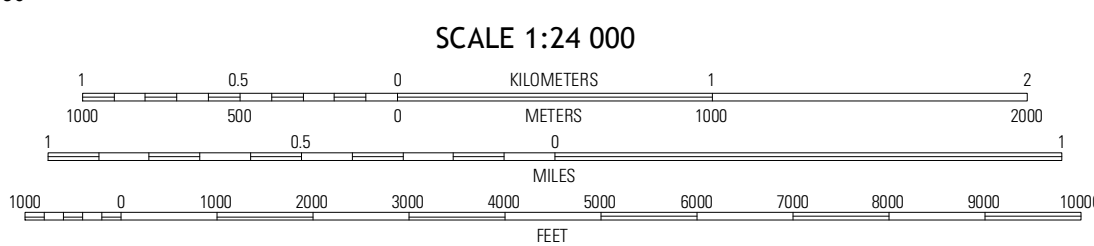
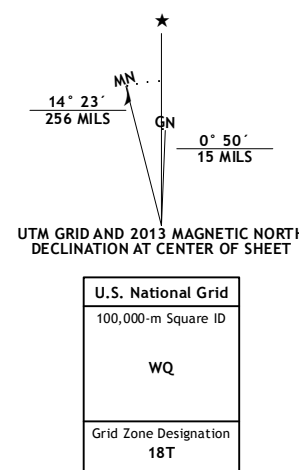
U.S. DEPARTMENT OF THE INTERIOR  
U. S. GEOLOGICAL SURVEY



MOFFITTSVILLE QUADRANGLE  
NEW YORK-CLINTON CO.  
7.5-MINUTE SERIES



Produced by the United States Geological Survey  
North American Datum of 1983 (NAD83)  
World Geodetic System of 1984 (WGS84). Projection and  
1,000-meter grid: Universal Transverse Mercator, Zone 18T  
10,000-foot ticks: New York Coordinate System of 1983 (east  
zone)  
Imagery.....NAIP, May 2011  
Roads.....©2006-2012 TomTom  
Names.....©2006-2012 TomTom  
Hydrography.....National Hydrography Dataset, 2011  
Contours.....National Elevation Dataset, 1998  
Boundaries.....Census, IBC, IBC, USGS, 1972 - 2012



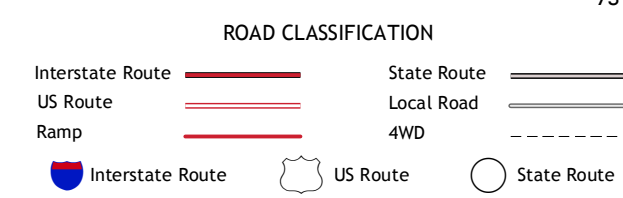
SCALE 1:24 000  
CONTOUR INTERVAL 20 FEET  
NORTH AMERICAN VERTICAL DATUM OF 1988  
This map was produced to conform with the  
National Geospatial Program US Topo Product Standard, 2011.  
A metadata file associated with this product is draft version 0.6.7



QUADRANGLE LOCATION

Ellenberg Center	Ellenberg Mountain	Jericho
Lyon Mountain	Moffittsville	Danversboro
Abler Brook	Redford	Peaseville

ADJOINING 7.5' QUADRANGLES



MOFFITTSVILLE, NY  
2013