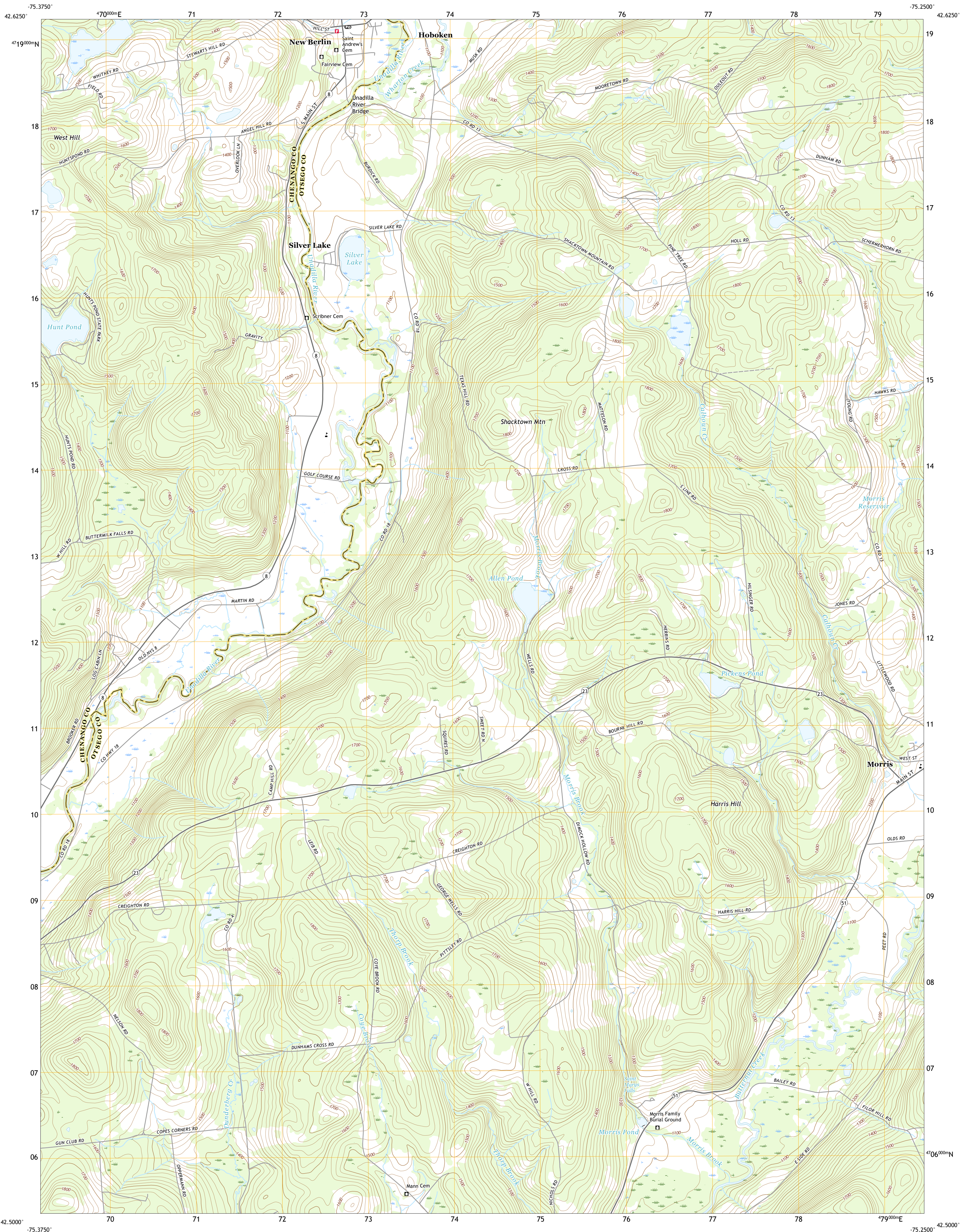




U.S. DEPARTMENT OF THE INTERIOR
U.S. GEOLOGICAL SURVEY



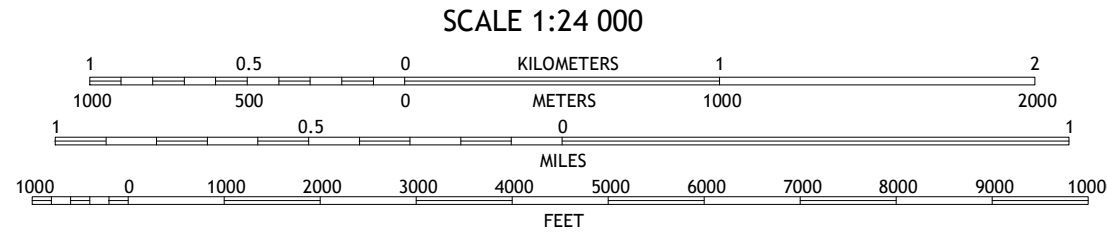
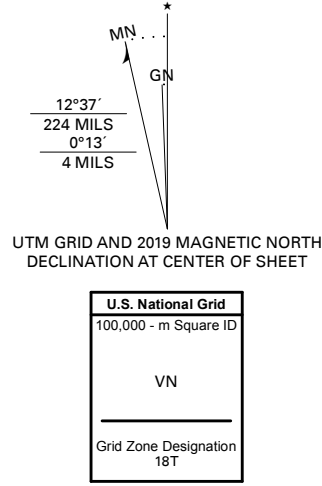
NEW BERLIN SOUTH QUADRANGLE
NEW YORK
7.5-MINUTE SERIES



Produced by the United States Geological Survey

North American Datum of 1983 (NAD83)
World Geodetic System of 1984 (WGS84), Projection and
1 000-meter grid/Universal Transverse Mercator, Zone 18T
This map is not a legal document. Boundaries may be
generalized for this map scale. Private lands within government
reservations may not be shown. Obtain permission before
entering private lands.

Imagery.....NAIP, September 2017 - December 2017
Roads.....U.S. Census Bureau, 2016
Names.....GNS, 1980 - 2019
Hydrography.....National Hydrography Dataset, 2002 - 2019
Contours.....National Elevation Dataset, 1999
Boundaries.....Multiple sources; see metadata file 2017 - 2018
Wetlands.....FWS National Wetlands Inventory 1982



1	2	3
4	5	6
7	8	9

1 Sherburne
2 New Berlin North
3 Edinboro
4 Holmesville
5 Morris
6 Guilford
7 Gilbertsville
8 Otego

ROAD CLASSIFICATION		
Expressway	Local Connector	
Secondary Hwy	Local Road	
Ramp	4WD	
Interstate Route	US Route	State Route

NEW BERLIN SOUTH, NY
2019

