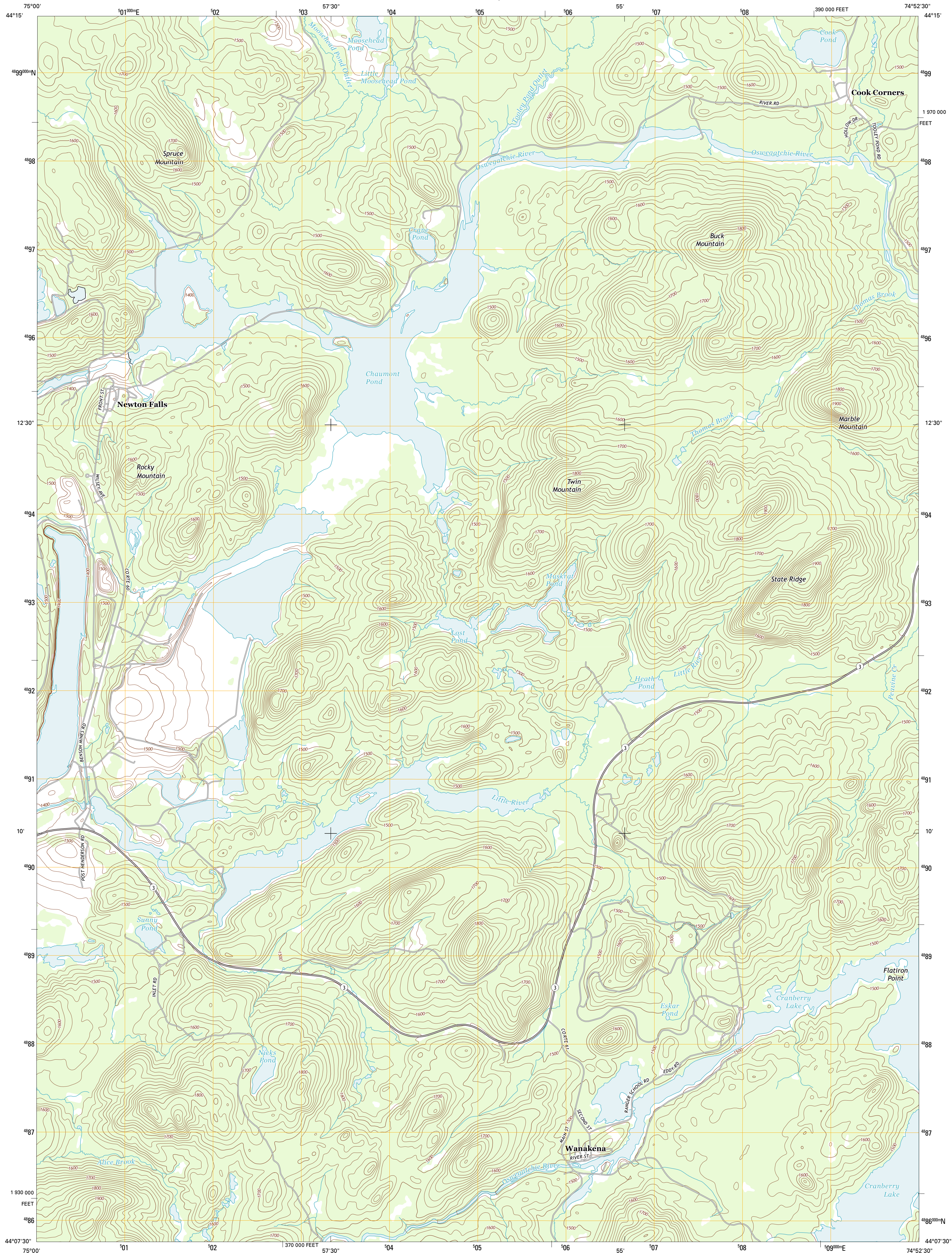




U.S. DEPARTMENT OF THE INTERIOR  
U. S. GEOLOGICAL SURVEY



NEWTON FALLS QUADRANGLE  
NEW YORK-ST. LAWRENCE CO.  
7.5-MINUTE SERIES

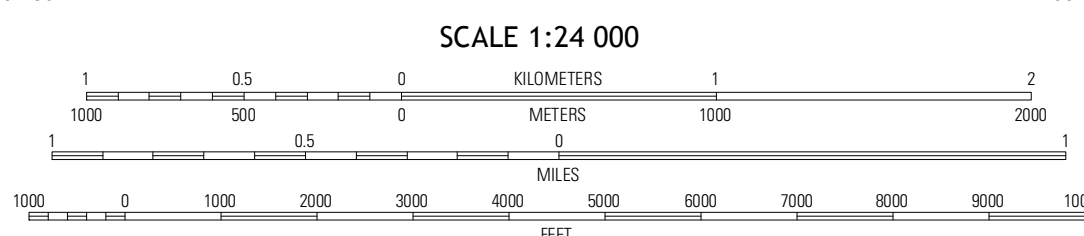


Produced by the United States Geological Survey  
North American Datum of 1983 (NAD83)  
World Geodetic System of 1984 (WGS84). Projection and  
1 000-meter grid: Universal Transverse Mercator, Zone 18T  
10 000-foot ticks: New York Coordinate System of 1983 (east  
zone)

Imagery.....NAIP, September 2011  
Roads.....©2006-2012 TomTom  
Names.....GNIS, 2012  
Hydrography.....National Hydrography Dataset, 2011  
Contours.....National Elevation Dataset, 1999  
Boundaries.....Census, IBWC, IBC, USGS, 1972 - 2012

UTM GRID AND 2013 MAGNETIC NORTH  
DECLINATION AT CENTER OF SHEET

U.S. National Grid  
100,000-m Square ID  
WP  
Grid Zone Designation  
18T



CONTOUR INTERVAL 20 FEET  
NORTH AMERICAN VERTICAL DATUM OF 1988

This map was produced to conform with the  
National Geospatial Program US Topo Product Standard, 2011.  
A metadata file associated with this product is draft version 0.6.7



QUADRANGLE LOCATION

|                |              |                |
|----------------|--------------|----------------|
| Degrasse       | Tooley Pond  | Brother Ponds  |
| Oswegatchie    | Newton Falls | Cranberry Lake |
| Oswegatchie SE | Five Ponds   | Wolf Mountain  |

ADJOINING 7.5' QUADRANGLES

ROAD CLASSIFICATION

Interstate Route (thick red line)  
US Route (red line)  
Ramp (red line with blue triangle)  
State Route (thin red line)  
Local Road (black line)  
4WD (black line with cross-ticks)  
State Route (circle with red border)

NEWTON FALLS, NY  
2013