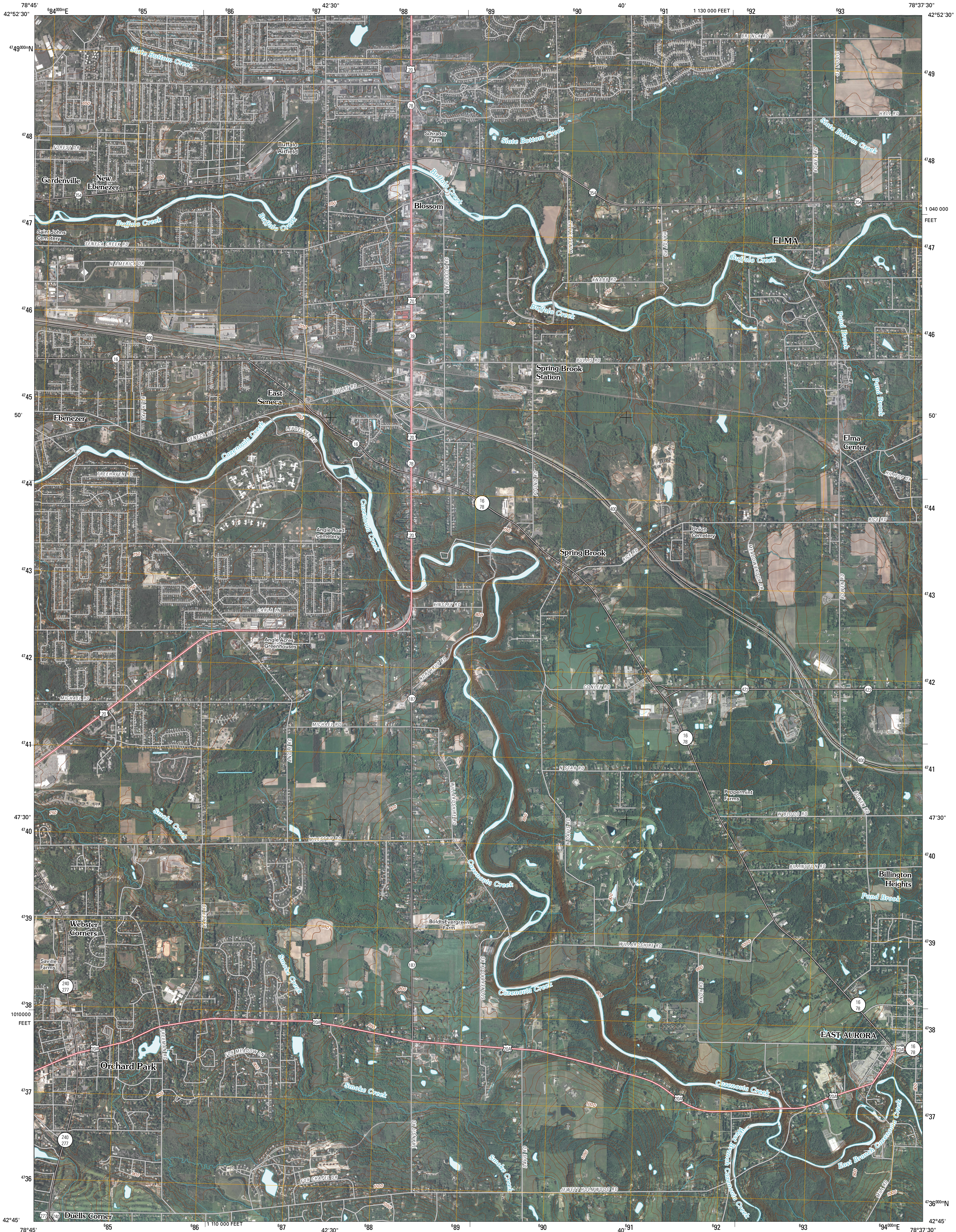




U.S. DEPARTMENT OF THE INTERIOR  
U. S. GEOLOGICAL SURVEY

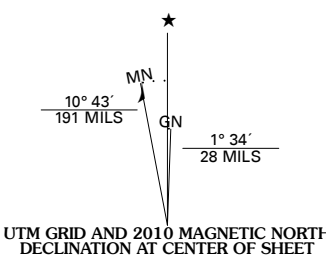


ORCHARD PARK QUADRANGLE  
NEW YORK  
7.5-MINUTE SERIES

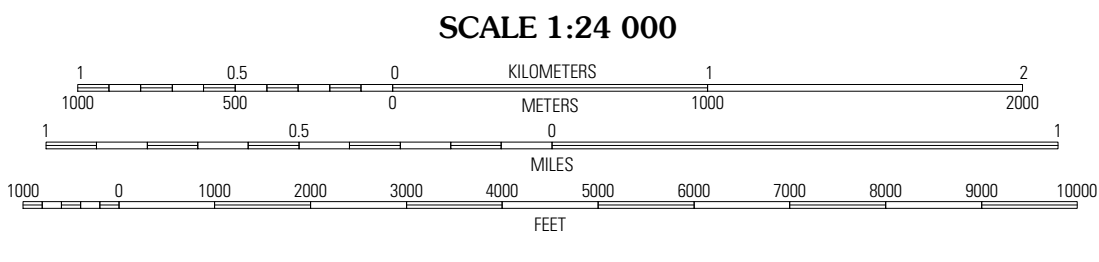


Produced by the United States Geological Survey  
North American Datum of 1983 (NAD83)  
World Geodetic System of 1984 (WGS84). Projection and  
1 000-meter grid: Universal Transverse Mercator, Zone 17T  
10 000-foot ticks: New York Coordinate System of 1983  
(west zone)

Imagery:.....NAIP, May 2008 - July 2008  
Roads:.....US Census Bureau TIGER data  
with limited USGS updates, 2004  
Names:.....GNIS, 2008  
Hydrography:.....National Hydrography Dataset, 2008  
Contours:.....National Elevation Dataset, 1998



U.S. National Grid 100 000-m Square ID
PH
Grid Zone Designation 17T



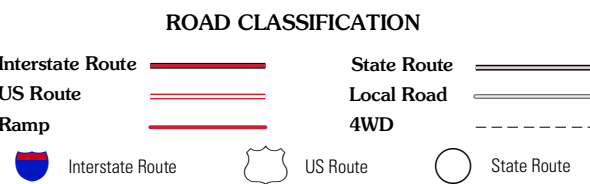
CONTOUR INTERVAL 10 FEET

This map was produced to conform with version 0.5.10 of the  
draft USGS Standards for 7.5-Minute Quadrangle Maps.  
A metadata file associated with this product is also draft version 0.5.10



Buffalo NE	Lancaster	Clarence
Buffalo SE	Orchard Park	East Aurora
Hamburg	Colden	Holland

ADJOINING 7.5 QUADRANGLES



ORCHARD PARK, NY  
2010