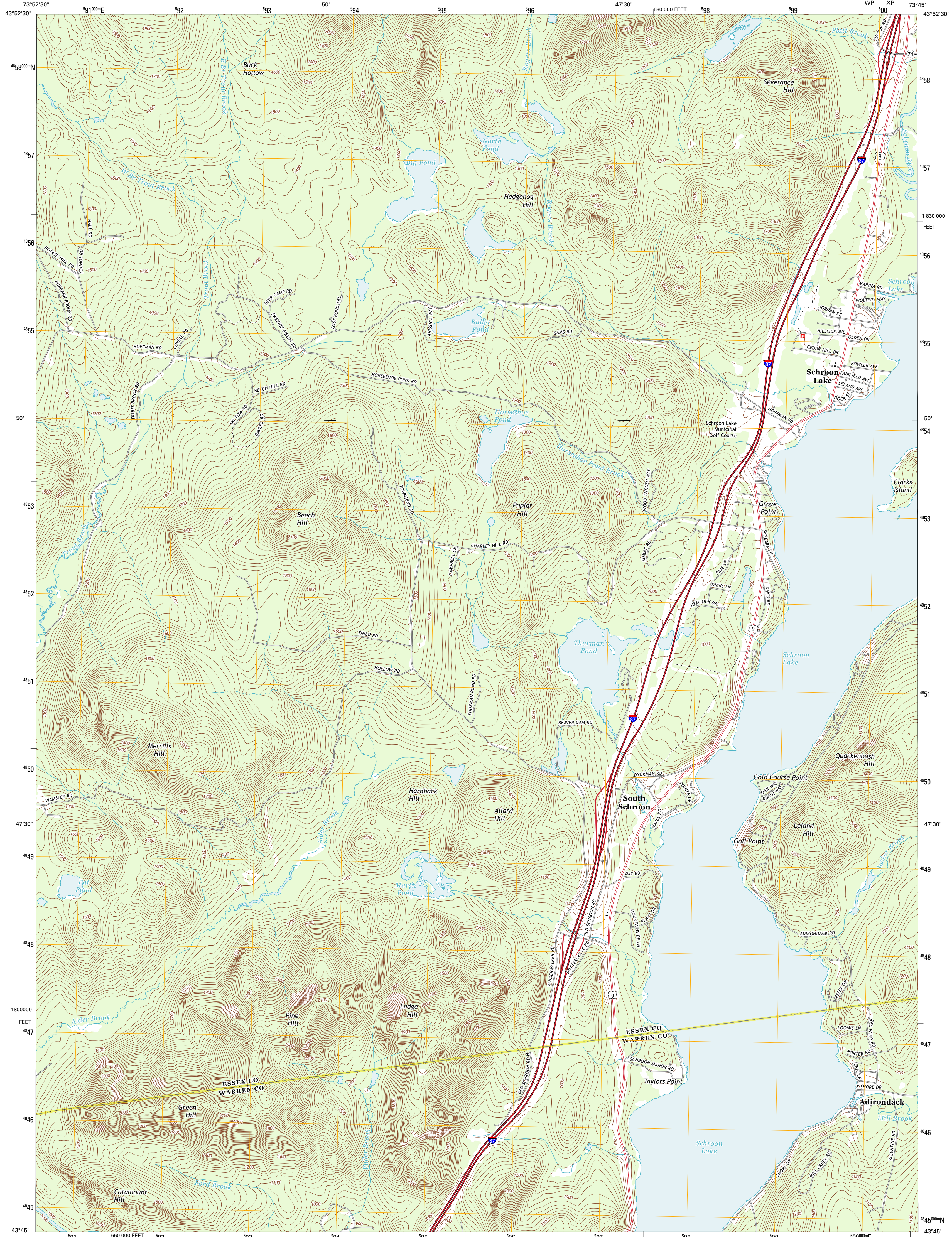




U.S. DEPARTMENT OF THE INTERIOR
U. S. GEOLOGICAL SURVEY

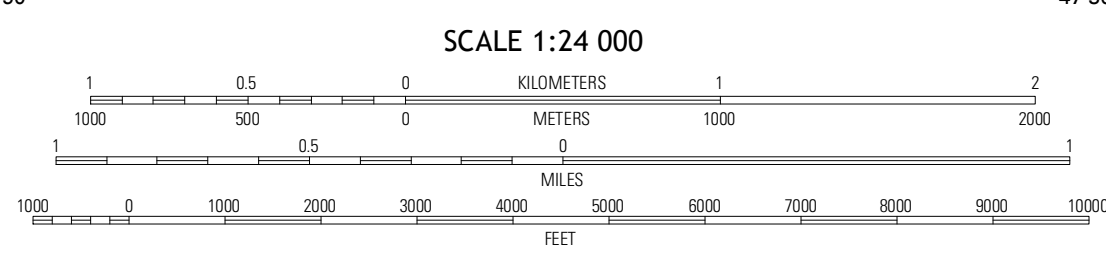
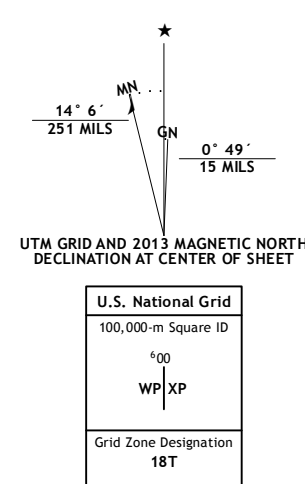


SCHROON LAKE QUADRANGLE
NEW YORK
7.5-MINUTE SERIES



Produced by the United States Geological Survey
North American Datum of 1983 (NAD83)
World Geodetic System of 1984 (WGS84). Projection and
1 000-meter grid: Universal Transverse Mercator, Zone 18T
10 000-foot ticks: New York Coordinate System of 1983 (east
zone)

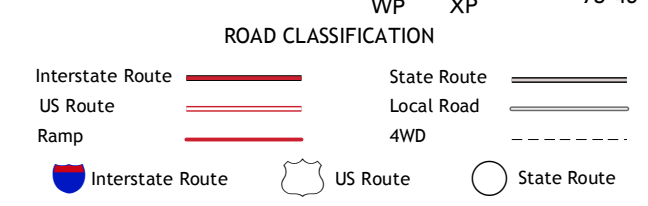
Imagery.....NAIP, May 2011
Roads.....©2006-2012 TomTom
Names.....GNIS, 2012
Hydrography.....National Hydrography Dataset, 2011
Contours.....National Elevation Dataset, 1998
Boundaries.....Census, IBVC, IBC, USGS, 1972 - 2012



QUADRANGLE LOCATION

Cheyey Pond	Blue Ridge	Paradox Lake
Minerva	Schroon Lake	Platnick Mountain
North Creek	Chestertown	Brant Lake

ADJOINING 7.5 QUADRANGLES



CONTOUR INTERVAL 20 FEET
NORTH AMERICAN DATUM OF 1983

This map was produced to conform with the
National Geospatial Program US Topo Product Standard, 2011.
A metadata file associated with this product is draft version 0.6.7

SCHROON LAKE, NY
2013