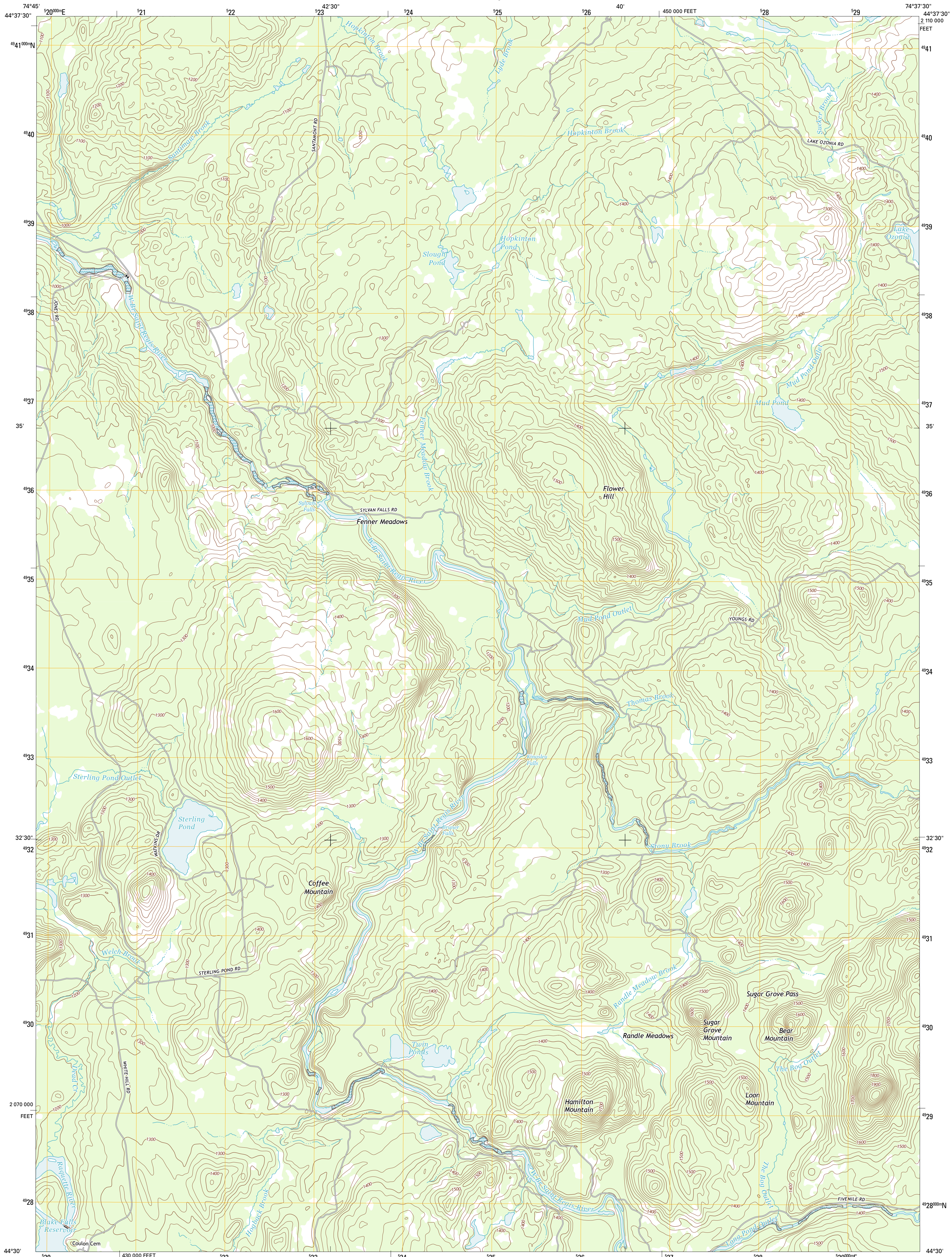




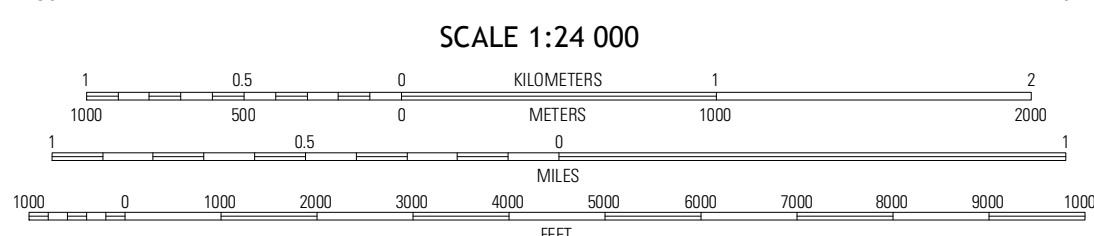
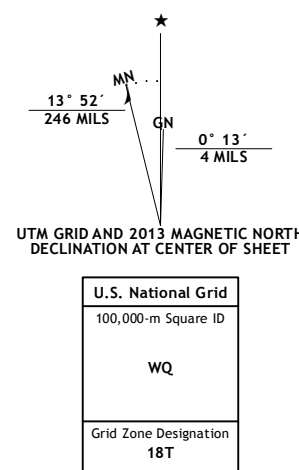
U.S. DEPARTMENT OF THE INTERIOR
U. S. GEOLOGICAL SURVEY



SYLVAN FALLS QUADRANGLE
NEW YORK-ST. LAWRENCE CO.
7.5-MINUTE SERIES



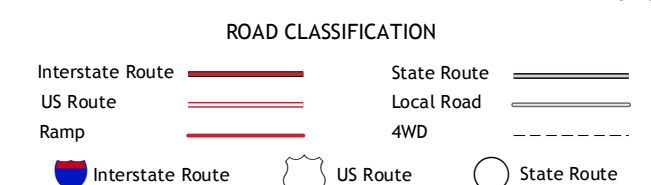
Produced by the United States Geological Survey
 North American Datum of 1983 (NAD83)
 World Geodetic System of 1984 (WGS84). Projection and
 1 000-meter grid: Universal Transverse Mercator, Zone 18T
 10 000-foot ticks: New York Coordinate System of 1983 (east
 zone)
 Imagery.....NAIP, September 2011
 Roads.....©2006-2012 TomTom
 Names.....GNS, 2012
 Hydrography.....National Hydrography Dataset, 2011
 Contours.....National Elevation Dataset, 1999
 Boundaries.....Census, IBWC, IBC, USGS, 1972 - 2012



QUADRANGLE LOCATION

Parisville	Nicholsville	Saint Regis Falls
Rainbow Falls	Sylvan Falls	Lake Ozonia
Stark	Carry Falls Reservoir	Amherstville Falls

ADJOINING 7.5' QUADRANGLES



CONTOUR INTERVAL 20 FEET
 NORTH AMERICAN VERTICAL DATUM OF 1988

This map was produced to conform with the
 National Geospatial Program US Topo Product Standard, 2011.
 A metadata file associated with this product is draft version 0.6.7

SYLVAN FALLS, NY
 2013