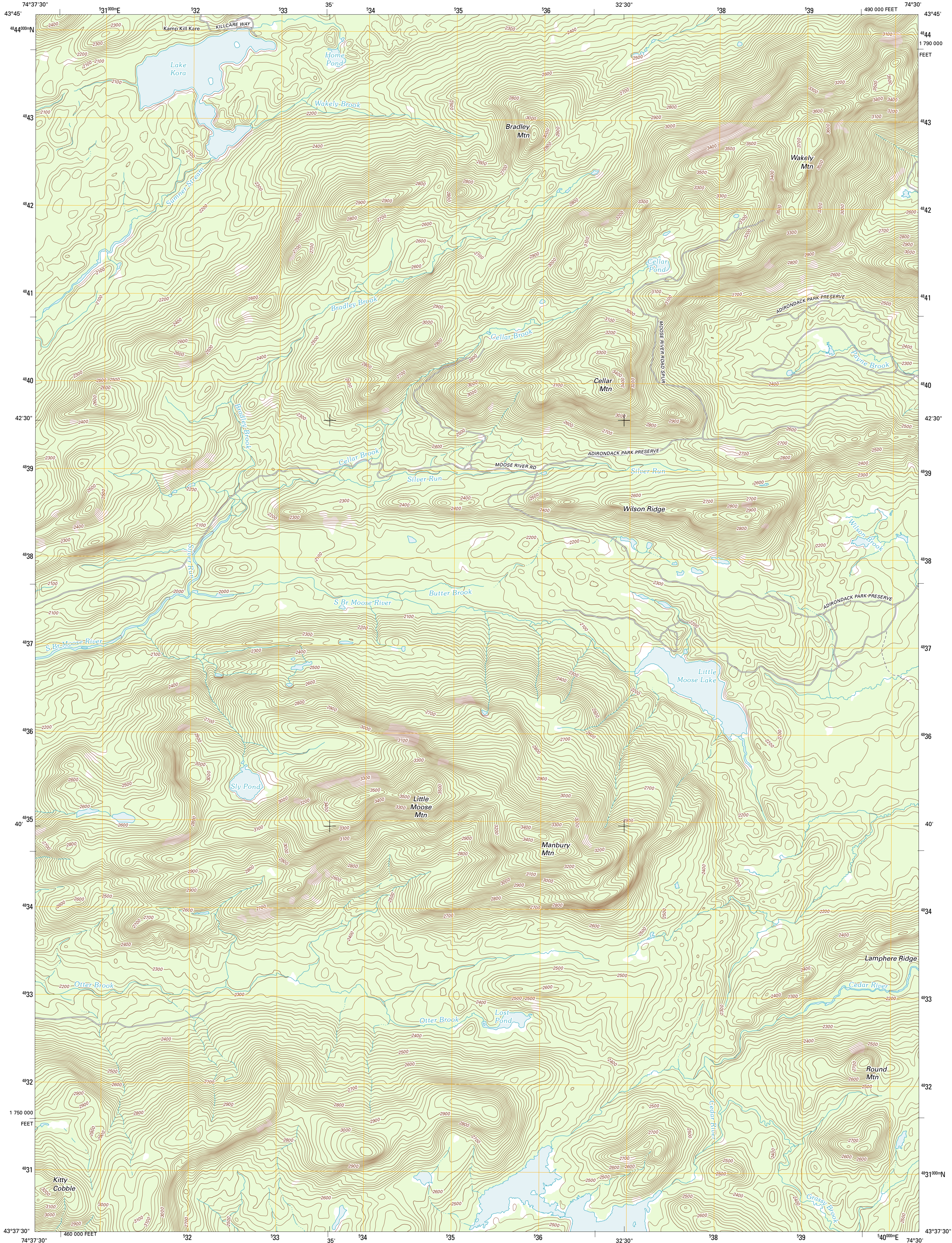




U.S. DEPARTMENT OF THE INTERIOR
U. S. GEOLOGICAL SURVEY

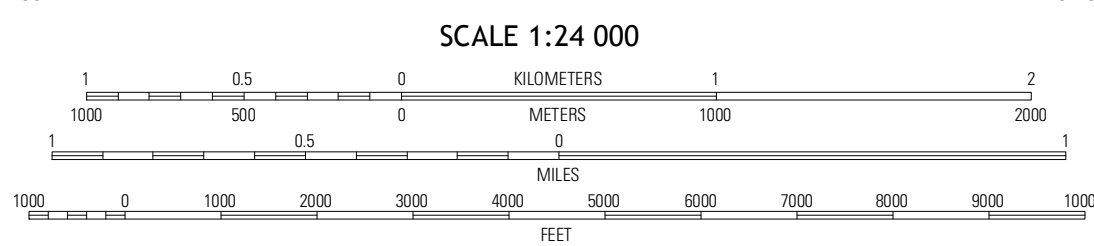
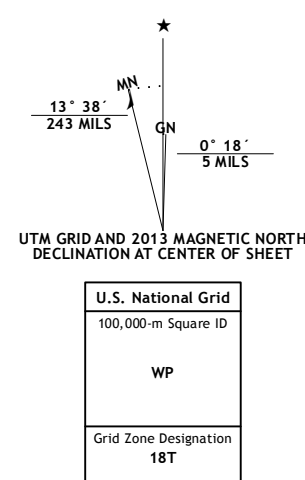


WAKELY MOUNTAIN QUADRANGLE
NEW YORK-HAMILTON CO.
7.5-MINUTE SERIES



Produced by the United States Geological Survey
North American Datum of 1983 (NAD83)
World Geodetic System of 1984 (WGS84). Projection and
1000-meter grid: Universal Transverse Mercator, Zone 18T
10,000-foot ticks: New York Coordinate System of 1983 (east
zone)

Imagery.....NAIP, September 2011
Roads.....©2006-2012 TomTom
Names.....©2006-2012 TomTom
Hydrography.....National Hydrography Dataset, 2011
Contours.....National Elevation Dataset, 1998
Boundaries.....Census, IBWC, IBC, USGS, 1972 - 2012



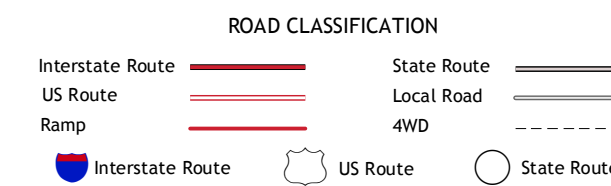
CONTOUR INTERVAL 20 FEET
NORTH AMERICAN VERTICAL DATUM OF 1988
This map was produced to conform with the
National Geospatial Program US Topo Product Standard, 2011.
A metadata file associated with this product is draft version 0.6.7



QUADRANGLE LOCATION

| | | |
|----------------------|-----------------|--------------------|
| Ragette Lake | Sargent Pond | Blue Mountain Lake |
| Mount Tom | Wakely Mountain | Stony Mountain |
| Spruce Lake Mountain | Spruce Lake | Page Mountain |

ADJOINING 7.5 QUADRANGLES



WAKELY MOUNTAIN, NY
2013