



U.S. DEPARTMENT OF THE INTERIOR
U. S. GEOLOGICAL SURVEY

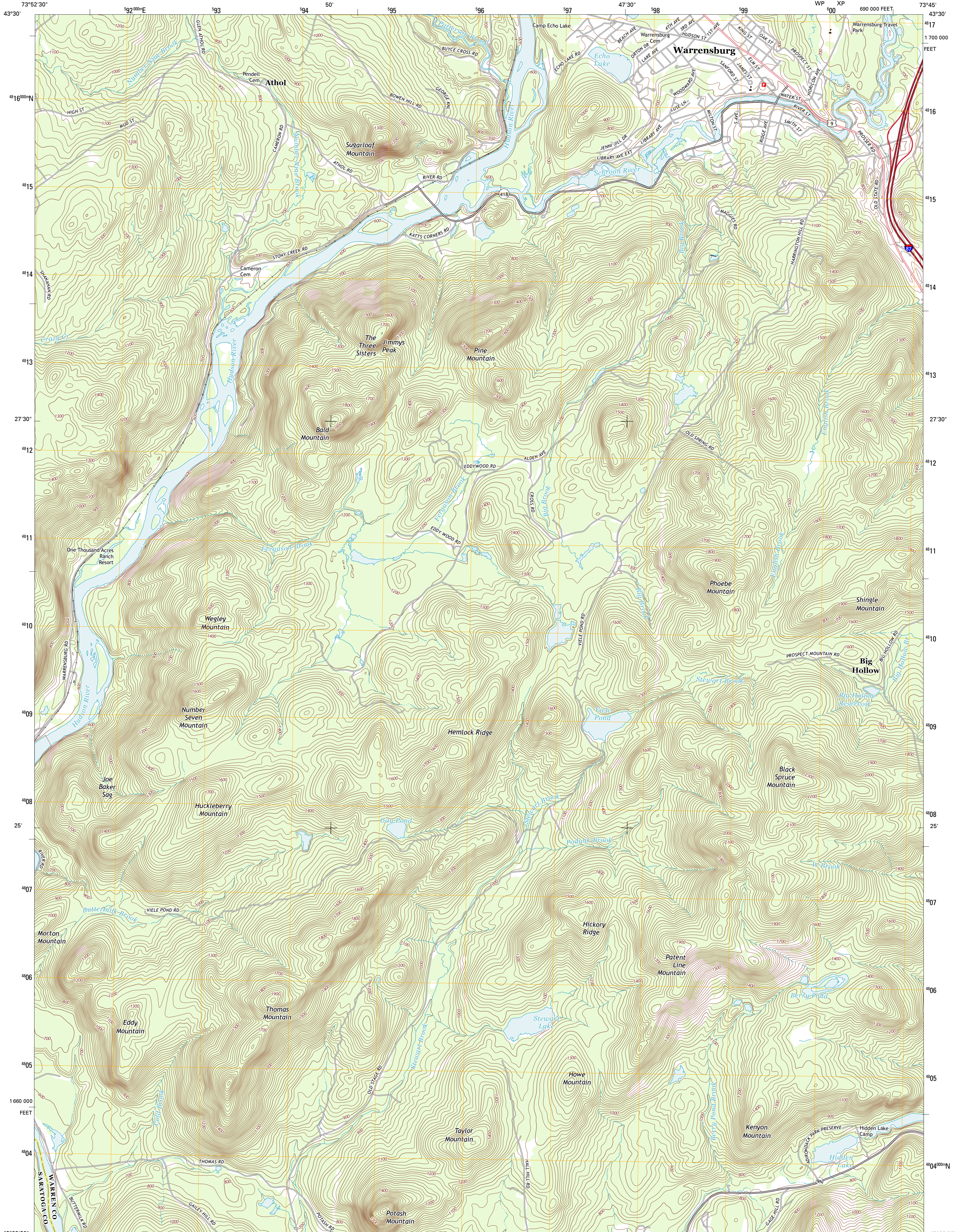


WARRENSBURG QUADRANGLE
NEW YORK

7.5-MINUTE SERIES

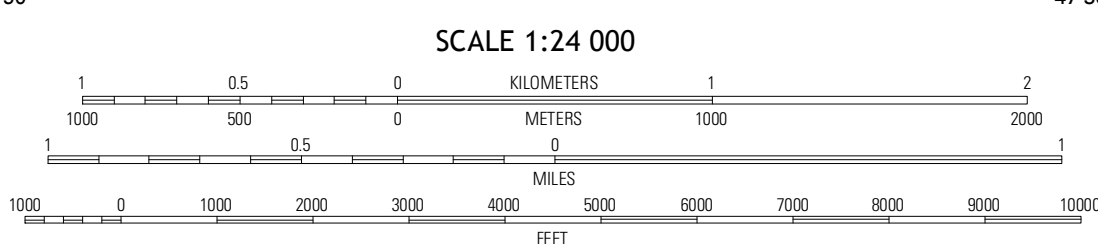
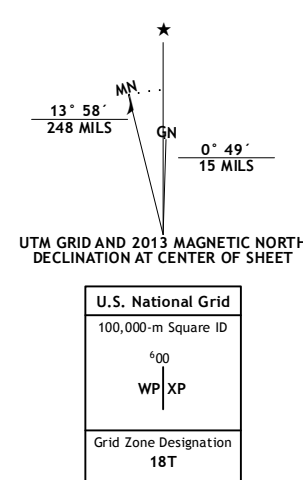
WP XP

690 000 FEET



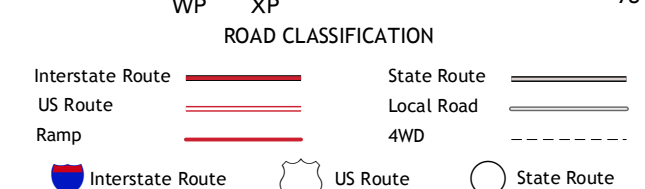
Produced by the United States Geological Survey
North American Datum of 1983 (NAD83). Projection and
1:000-meter grid: Universal Transverse Mercator, Zone 18T
10 000-foot ticks: New York Coordinate System of 1983 (east
zone)

Imagery.....NAIP, May 2011
Roads.....©2006-2012 TomTom
Names.....©2006-2012 TomTom
Hydrography.....National Hydrography Dataset, 2011
Contours.....National Elevation Dataset, 1998
Boundaries.....Census, IBC, USGS, 1972 - 2012



QUADRANGLE LOCATION

Johnsburg	The Glen	Bolton Landing
Shore Creek	Warrensburg	Lake George
Oriskanyville	Lake Luzerne	Gilts Falls



CONTOUR INTERVAL 20 FEET
NORTH AMERICAN VERTICAL DATUM OF 1988
This map was produced to conform with the
National Geospatial Program US Topo Product Standard, 2011.
A metadata file associated with this product is draft version 0.6.7

WARRENSBURG, NY
2013