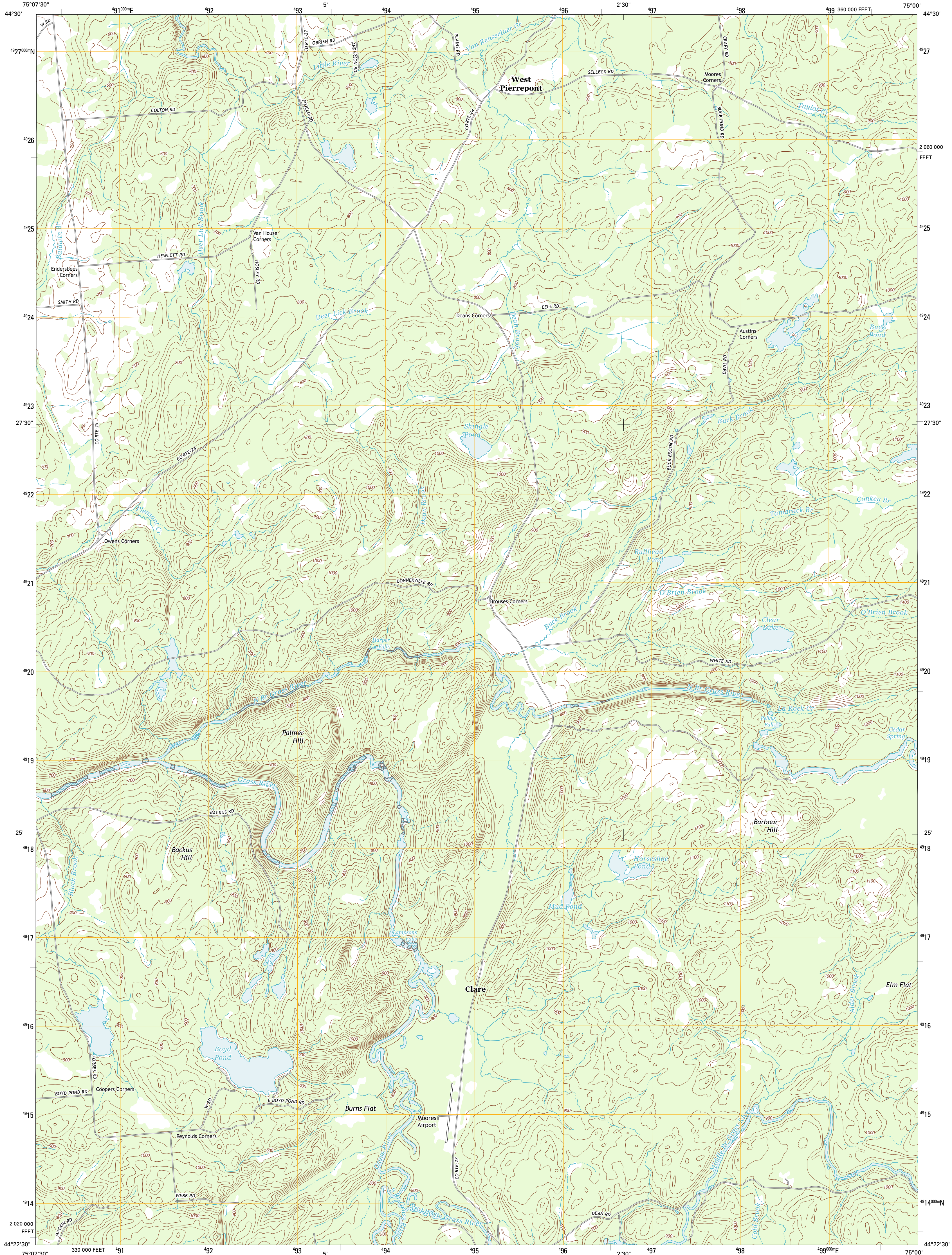




U.S. DEPARTMENT OF THE INTERIOR
U. S. GEOLOGICAL SURVEY



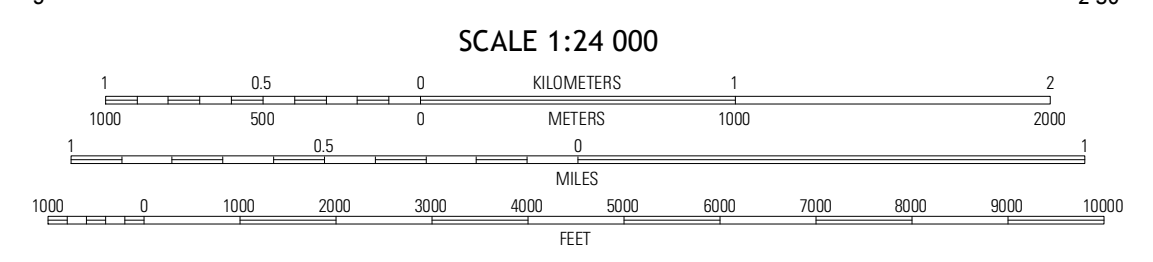
WEST PIERREPONT QUADRANGLE
NEW YORK-ST. LAWRENCE CO.
7.5-MINUTE SERIES



Produced by the United States Geological Survey
North American Datum of 1983 (NAD83)
World Geodetic System of 1984 (WGS84). Projection and
1 000-meter grid: Universal Transverse Mercator, Zone 18T
10 000-foot ticks: New York Coordinate System of 1983 (east
zone)
Imagery.....NAIP, September 2011
Roads.....©2006-2012 TomTom
Names.....©2011-2012 GNIS, 2012
Hydrography.....National Hydrography Dataset, 2011
Contours.....National Elevation Dataset, 1999
Boundaries.....Census, IBWC, IBC, USGS, 1972 - 2012

UTM GRID AND 2013 MAGNETIC NORTH DECLINATION AT CENTER OF SHEET

U.S. National Grid
100,000 m Square ID
VQ
Grid Zone Designation
18T



CONTOUR INTERVAL 20 FEET
NORTH AMERICAN VERTICAL DATUM OF 1988
This map was produced to conform with the
National Geospatial Program US Topo Product Standard, 2011.
A metadata file associated with this product is draft version 0.6.7

QUADRANGLE LOCATION

Canton	Pierrepont	Colton
Hermon	West Pierrepont	Albert Marsh
South Edwards	Degrasse	Toolen Pond

ADJOINING 7.5' QUADRANGLES

ROAD CLASSIFICATION

Interstate Route	State Route
US Route	Local Road
Ramp	4WD

Legend for road types: Interstate Route (thick blue line), US Route (thin blue line), State Route (thin black line), Local Road (dashed black line), 4WD (red line), Ramp (red line with cross-ticks).

WEST PIERREPONT, NY
2013