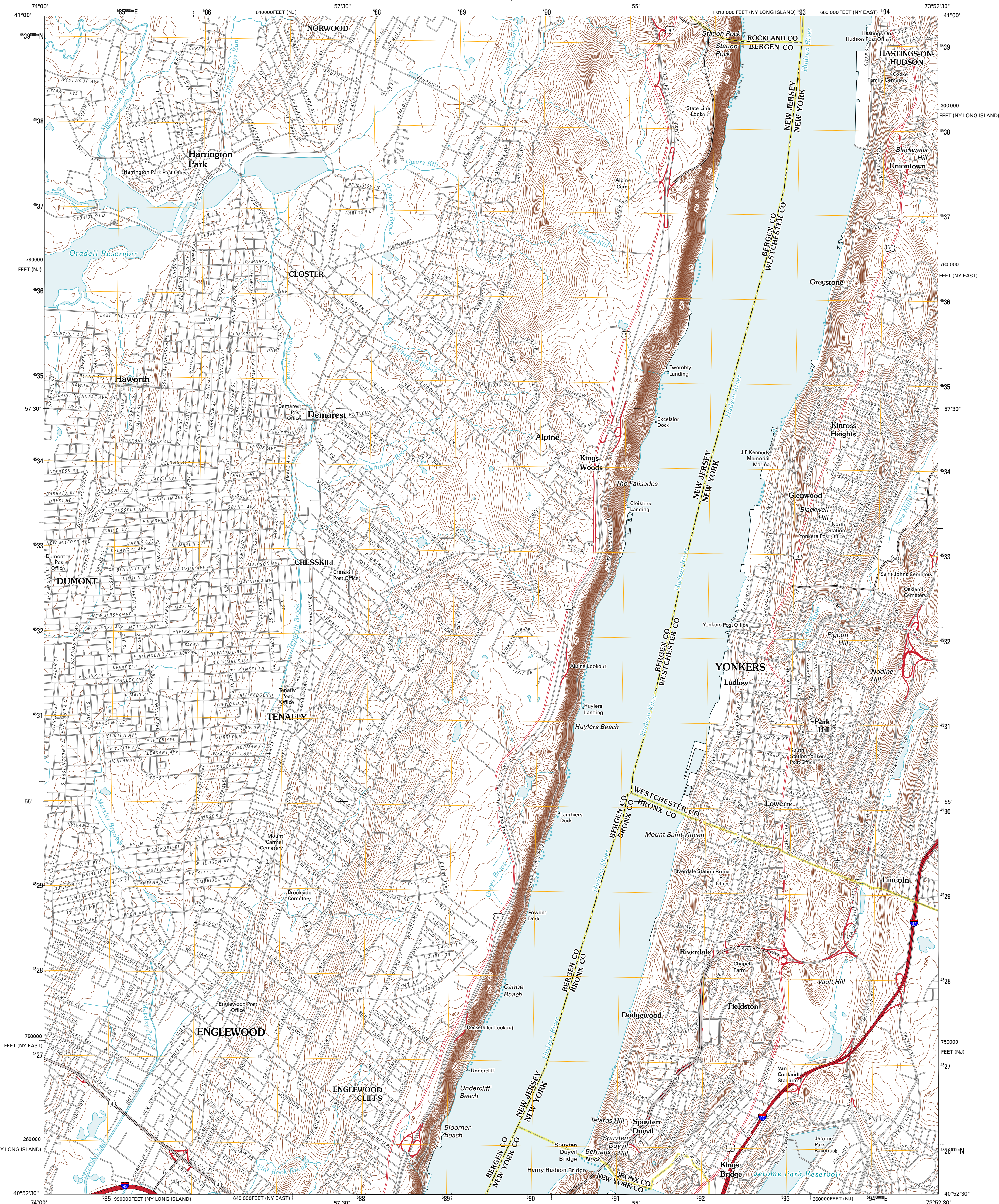




U.S. DEPARTMENT OF THE INTERIOR
U. S. GEOLOGICAL SURVEY

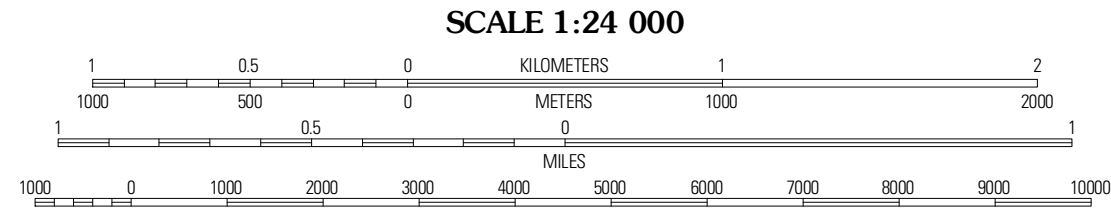
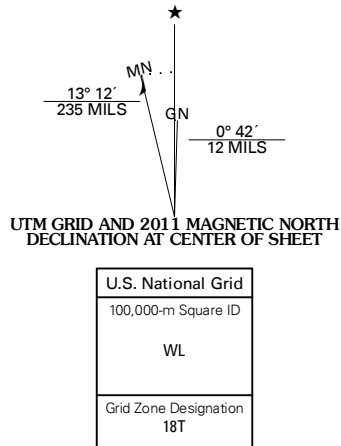


YONKERS QUADRANGLE
NEW YORK-NEW JERSEY
7.5-MINUTE SERIES



Produced by the United States Geological Survey
North American Datum of 1983 (NAD83)
World Geodetic System of 1984 (WGS84). Projection and
1 000-meter grid: Universal Transverse Mercator, Zone 18T
10 000-foot ticks: New Jersey Coordinate System of 1983,
New York Coordinate System of 1983 (east and long island zones)

Imagery...State of New Jersey, January 2007 - January 2008
Other imagery provided by DE, NY, PA
Roads...2006-2010 Tele Atlas
Names...GNIS, 2010
Hydrography...National Hydrography Dataset, 2007
Contours...National Elevation Dataset, 2002
Boundaries...Census, IBWC, IBC, USGS, 1972 - 2010



CONTOUR INTERVAL 10 FEET
NORTH AMERICAN VERTICAL DATUM OF 1988
This map was produced to conform with version 0.5.10
of the USGS US Topo Product Standard.
A metadata file associated with this product is draft version 0.5.15.NJ



Park Ridge	Yonkers	White Plains
Hackensack	Yonkers	Mount Vernon
Weehawken	Central Park	Flushing

ROAD CLASSIFICATION		
Interstate Route	State Route	
US Route	Local Road	
Ramp	4WD	
Interstate Route	US Route	State Route

YONKERS, NY-NJ
2011

ADJOINING 7.5' QUADRANGLES