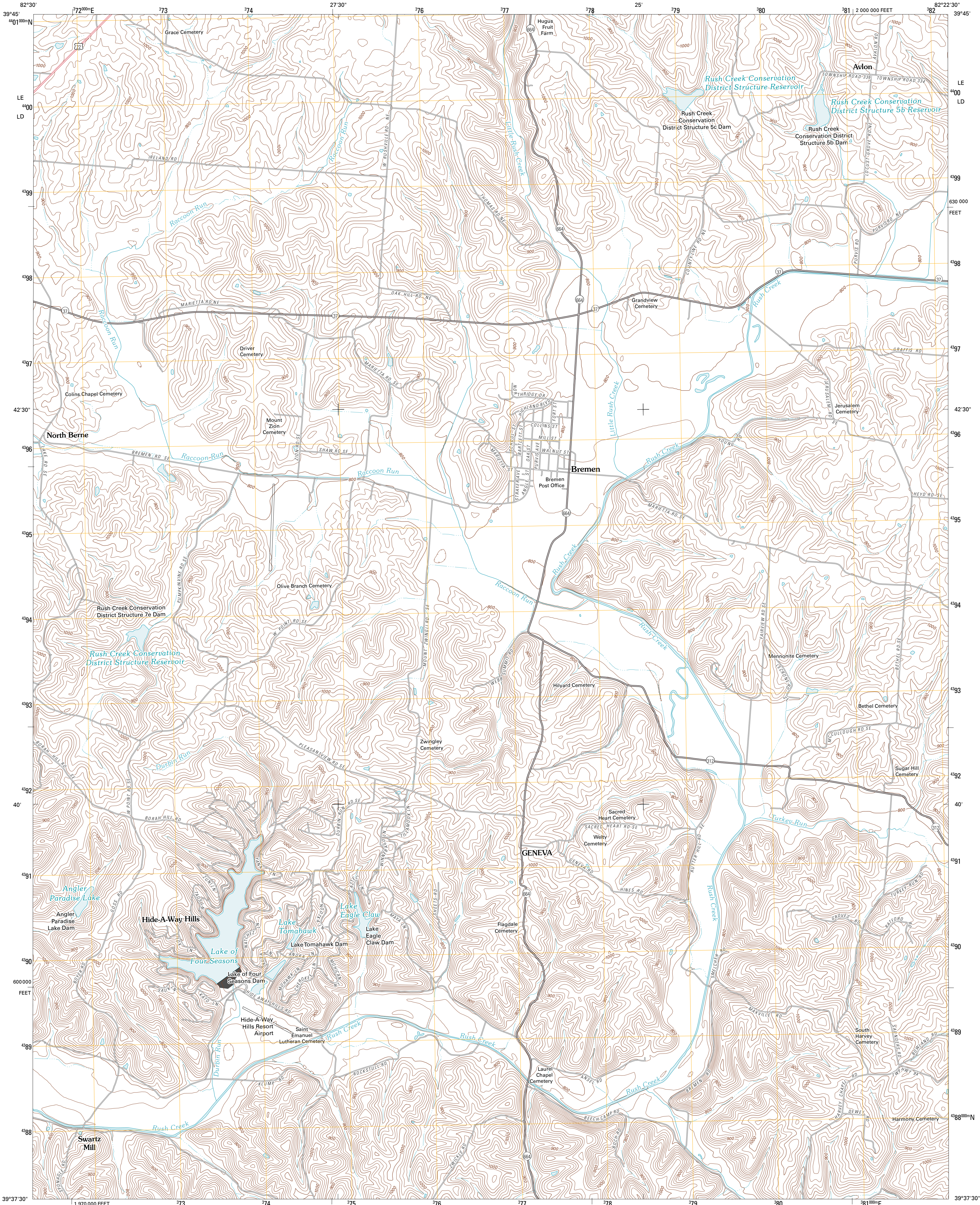




U.S. DEPARTMENT OF THE INTERIOR  
U. S. GEOLOGICAL SURVEY



BREMEN QUADRANGLE  
OHIO  
7.5-MINUTE SERIES

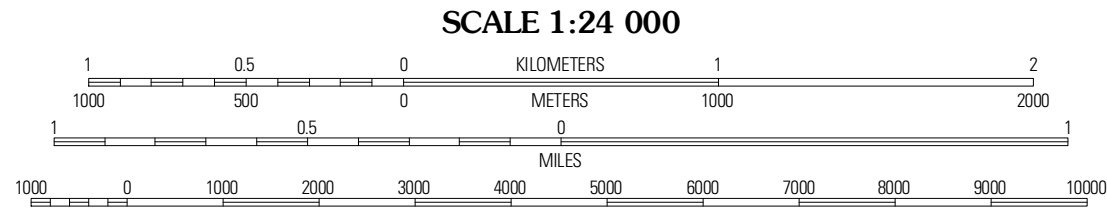


Produced by the United States Geological Survey  
North American Datum of 1983 (NAD83)  
World Geodetic System of 1984 (WGS84) Projection and  
1 000-meter grid: Universal Transverse Mercator, Zone 17S  
10 000-foot ticks: Ohio Coordinate System of 1983 (south zone)

Imagery.....NAP, July 2010  
Roads.....©2006-2010 Tele Atlas  
Names.....GNIS, 2010  
Hydrography.....National Hydrography Dataset, 2010  
Contours.....National Elevation Dataset, 2004

UTM GRID AND 2011 MAGNETIC NORTH  
DECLINATION AT CENTER OF SHEET

U.S. National Grid
100,000-m Square ID
LE
LD
Grid Zone Designation
17S



CONTOUR INTERVAL 20 FEET  
NORTH AMERICAN VERTICAL DATUM OF 1988  
This map was produced to conform with version 0.5.10 of the  
draft USGS Standards for 7.5-Minute Quadrangle Maps.  
A metadata file associated with this product is draft version 0.5.11



Baltimore	Rushville	Somerset
Lancaster	Bremen	Junction City
Rockbridge	Logan	Gore

ADJOINING 7.5' QUADRANGLES

ROAD CLASSIFICATION

Interstate Route	State Route
US Route	Local Road
Ramp	4WD

Interstate Route US Route State Route

BREMEN, OH  
2011