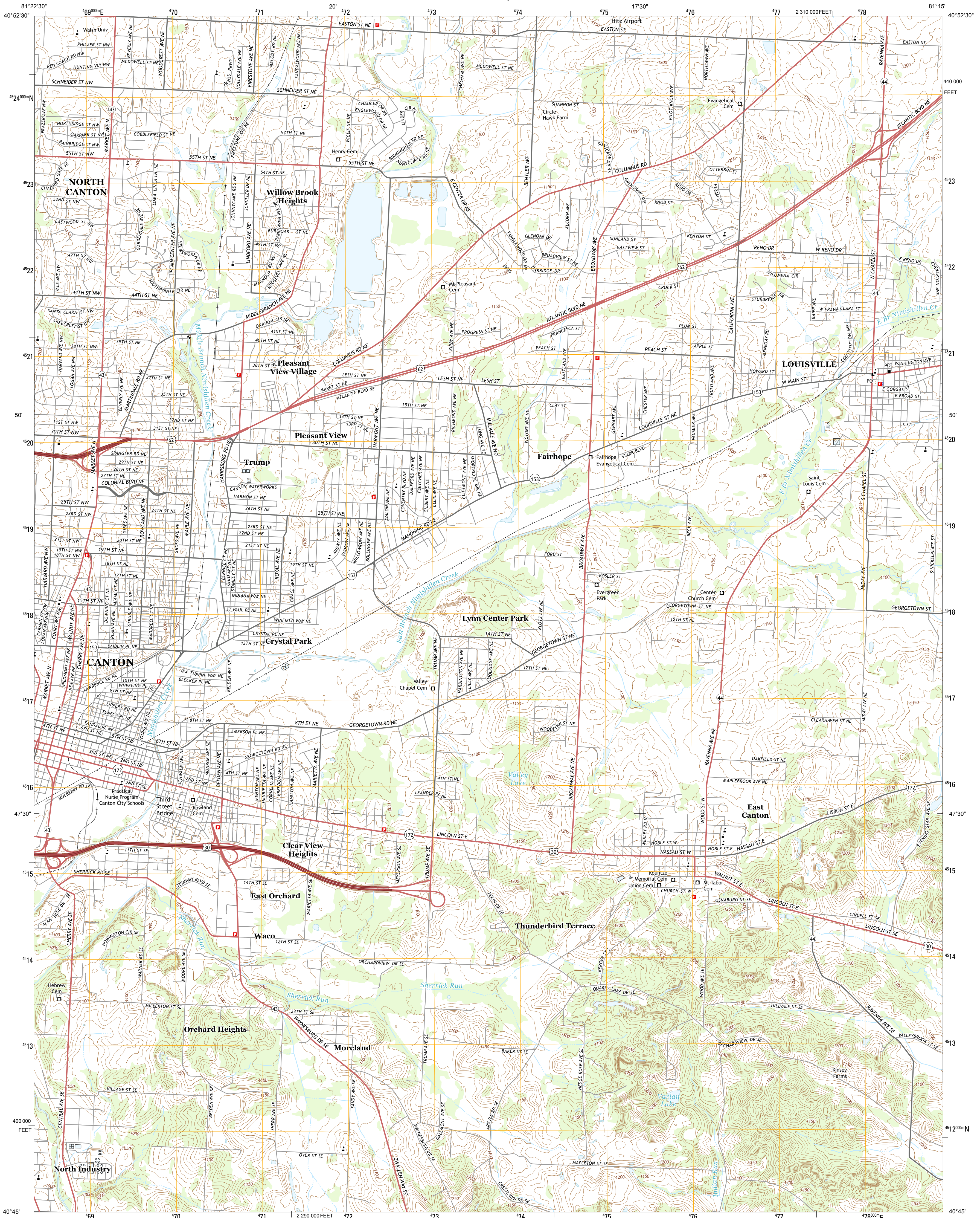




U.S. DEPARTMENT OF THE INTERIOR  
U. S. GEOLOGICAL SURVEY

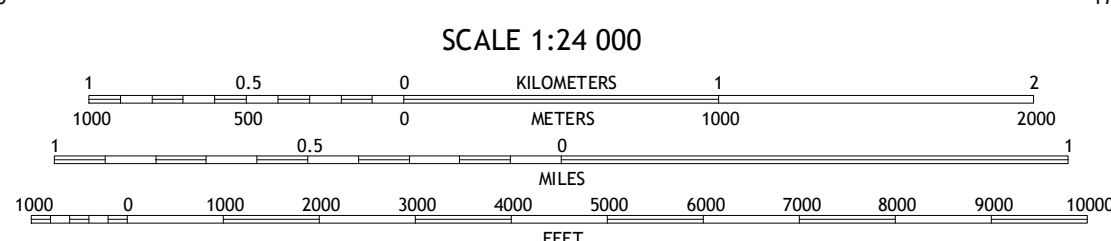
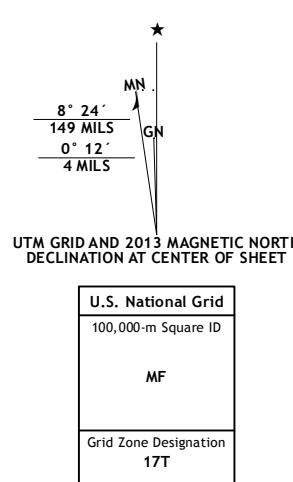


CANTON EAST QUADRANGLE  
OHIO-STARK CO.  
7.5-MINUTE SERIES



Produced by the United States Geological Survey  
North American Datum of 1983 (NAD83)  
World Geodetic System of 1984 (WGS84) Projection and  
1 000-meter grid; Universal Transverse Mercator, Zone 17T  
10 000-foot ticks; Ohio Coordinate System of 1983 (north zone)  
This map is not a legal document. Boundaries may be  
generalized for this map scale. Private lands within government  
reservations may not be shown. Obtain permission before  
entering private lands.

Imagery: ..... N/AIP, August 2011  
Roads: ..... ©2006-2013 TomTom  
Hydrography: ..... GNIS, 2013  
Contours: ..... National Hydrography Dataset, 2011  
Boundaries: ..... National Elevation Dataset, 2010  
Public Land Survey System: ..... Census, IBWC, IBC, USGS, 1972 - 2012  
BLM, 2013

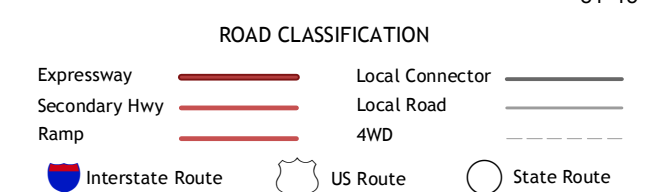


CONTOUR INTERVAL 10 FEET  
NORTH AMERICAN VERTICAL DATUM OF 1988  
This map was produced to conform with the  
National Geospatial Program US Topo Product Standard, 2011.  
A metadata file associated with this product is draft version 0.6.15



QUADRANGLE LOCATION

North	Harville	Limville
Canton	Canton	Robertsville
Bolivar	Waynesburg	Malvern



CANTON EAST, OH  
2013

