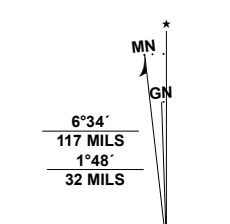


**Produced by the United States Geological Survey**

North American Datum of 1983 (NAD83)  
World Geodetic System of 1984 (WGS84), Projection and  
1 000-meter grid/Universal Transverse Mercator, Zone 17S  
This map is not a legal document. Boundaries may be  
generalized for this map scale. Private lands within government  
reservations may not be shown. Obtain permission before  
entering private lands.

Imagery.....NAIP, August 2015 - October 2015  
Roads.....U.S. Census Bureau, 2016  
Names.....GNIS, 1979 - 2019  
Hydrography.....National Hydrography Dataset, 1989 - 2019  
Contours.....National Elevation Dataset, 2010  
Boundaries.....Multiple sources; see metadata file, 2017 - 2018  
Public Land Survey System.....BLM, 2017  
Wetlands.....FWS National Wetlands Inventory 2004 - 2007



U.S. National Grid	100,000 - m Square ID
KE	
Grid Zone Designation	17S



CONTOUR INTERVAL 10 FEET  
NORTH AMERICAN DATUM OF 1983

This map was produced to conform with the  
National Geospatial Program US Topo Product Standard, 2011.  
A metadata file associated with this product is draft version 0.6.18



1	2	3
4	5	6
7	8	

ADJOINING QUADRANGLES

**ROAD CLASSIFICATION**

	Expressway		Local Connector
	Secondary Hwy		Local Road
	Ramp		4WD
	Interstate Route		US Route
			State Route

- 1 Donnellsville
- 2 Springfield
- 3 New Moorfield
- 4 Yellow Springs
- 5 South Charleston
- 6 Xenia
- 7 Cedarville
- 8 Jamestown

