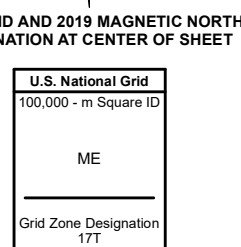
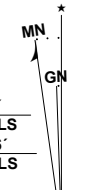


40.1250° -82.0000° 15 16 17 18 19 20 21 22 23 24 25 -81.8750° 40.1250°

Produced by the United States Geological Survey

North American Datum of 1983 (NAD83) World Geodetic System of 1984 (WGS84) Projection and 1 000-meter grid/Universal Transverse Mercator, Zone 17T This map is not a legal document. Boundaries may be generalized for this map scale. Private lands within government reservations may not be shown. Obtain permission before entering private lands.

Table with 2 columns: Feature Name and Date. Includes Imagery, Roads, Names, Hydrography, Contours, Boundaries, Public Land Survey System, and Wetlands.



CONTOUR INTERVAL 20 FEET NORTH AMERICAN VERTICAL DATUM OF 1988 This map was produced to conform with the National Geospatial Program US Topo Product Standard, 2011. A metadata file associated with this product is draft version 0.6.18



Table of adjoining quadrangles: 1 Warsaw, 2 Randle, 3 Coshocton, 4 Trimway, 5 Wills Creek, 6 Dresden, 7 Adamsville, 8 Otsego.

