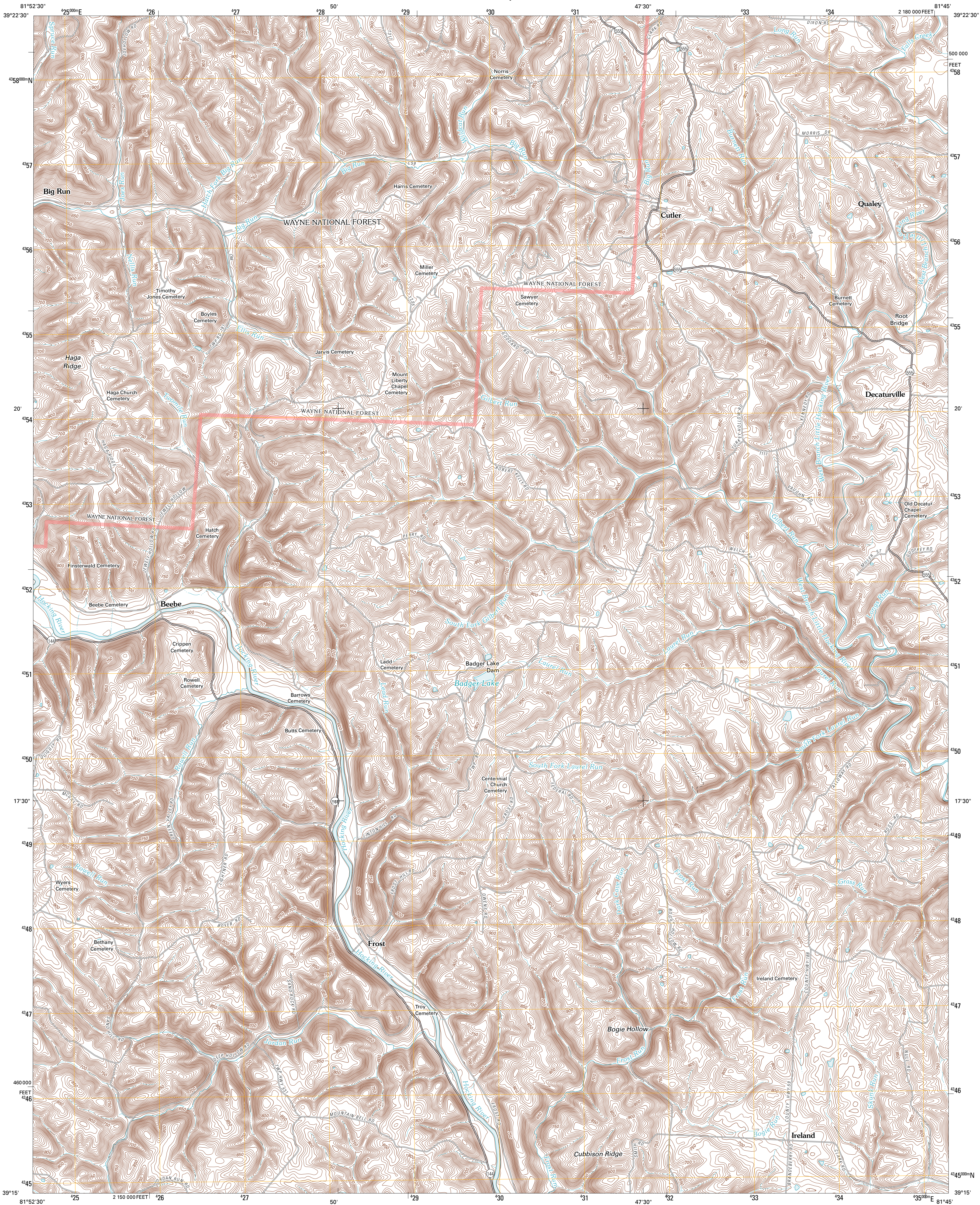




U.S. DEPARTMENT OF THE INTERIOR  
U. S. GEOLOGICAL SURVEY

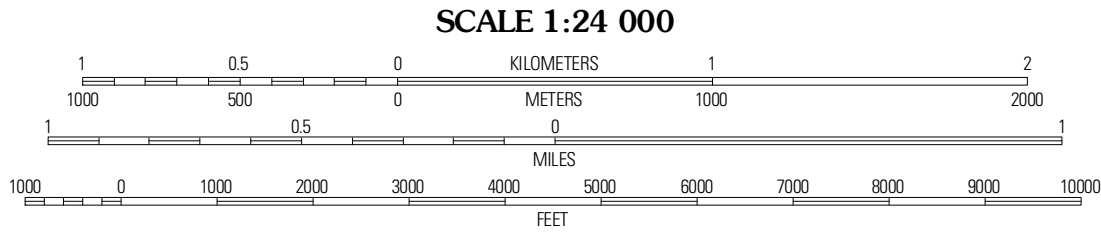
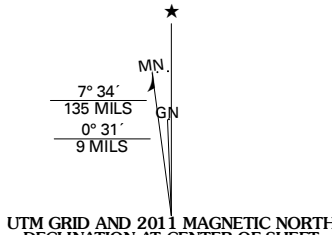


CUTLER QUADRANGLE  
OHIO  
7.5-MINUTE SERIES



Produced by the United States Geological Survey  
North American Datum of 1983 (NAD83)  
World Geodetic System of 1984 (WGS84). Projection and  
1 000-meter grid: Universal Transverse Mercator, Zone 17S  
10 000-foot ticks: Ohio Coordinate System of 1983 (south  
zone)

Imagery.....NAIP, June 2010 - July 2010  
Roads.....©2006-2010 Tele Atlas  
Roads within US Forest Service Lands.....FS Topo Data  
with limited Forest Service updates, 2009  
Names.....GNIS, 2010  
Hydrography.....National Hydrography Dataset, 2010  
Contours.....National Elevation Dataset, 2004



QUADRANGLE LOCATION		
Amesville	Chesterhill	Watertown
Stewart	Cutler	Little Hocking
Alfred	Cookville	Lubeck

ROAD CLASSIFICATION

Interstate Route	State Route
US Route	Local Road
Ramp	4WD

Legend for road types: Interstate Route (thick red line), US Route (red line), Ramp (red line with blue triangle), State Route (thin red line), Local Road (thin black line), 4WD (thick black line), FS Primary Route (thin black line with cross-ticks), US Route (thin black line with cross-ticks), FS Passenger Route (thin black line with cross-ticks), FS High Clearance Route (thin black line with cross-ticks), State Route (thin black line with cross-ticks).

Check with local Forest Service unit for current travel conditions and restrictions.

CUTLER, OH  
2011

ADJOINING 7.5 QUADRANGLES