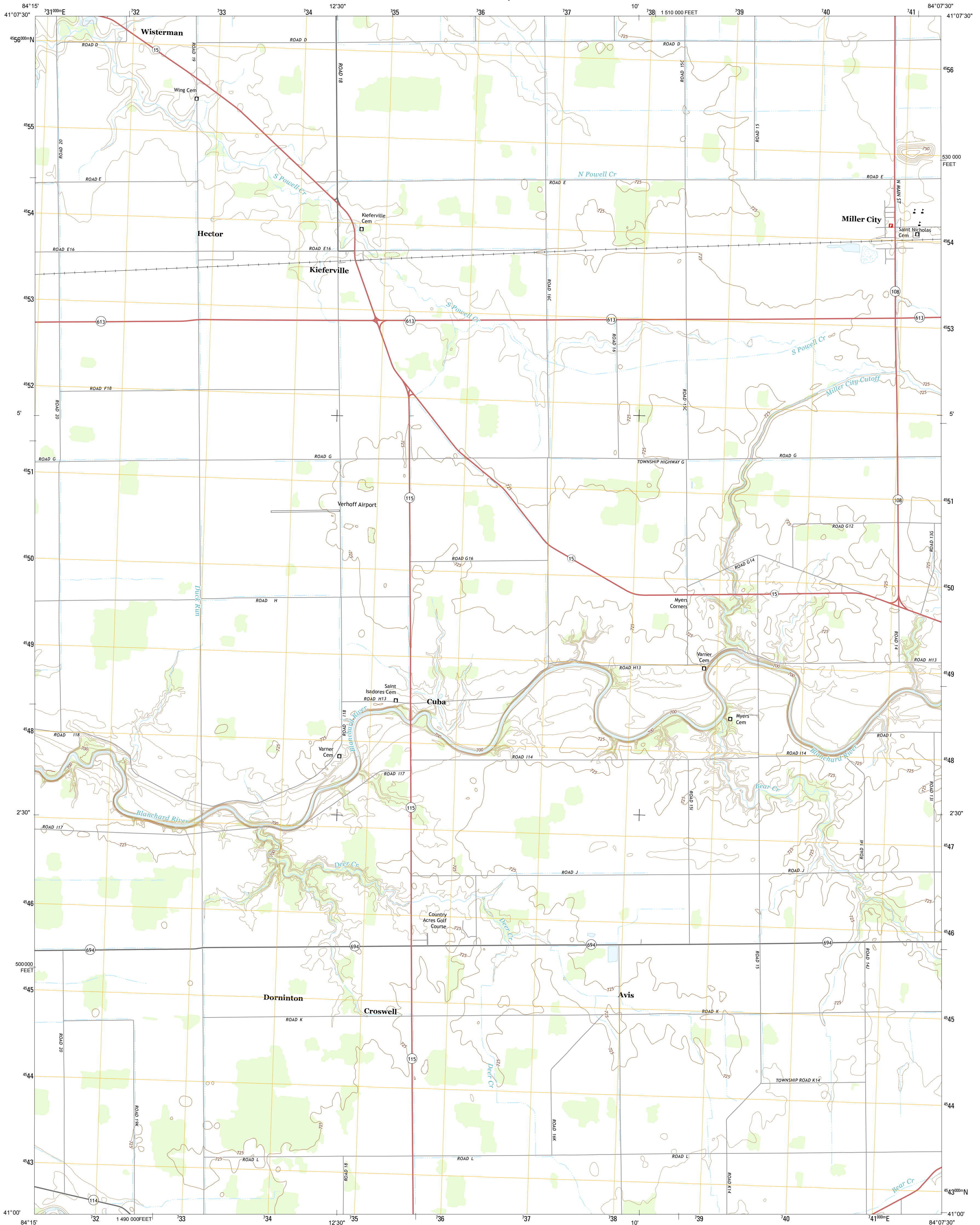




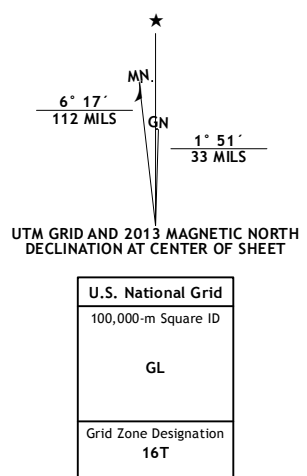
U.S. DEPARTMENT OF THE INTERIOR
U. S. GEOLOGICAL SURVEY



MILLER CITY QUADRANGLE
OHIO-PUTNAM CO.
7.5-MINUTE SERIES

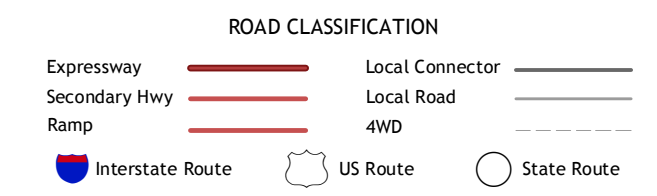


Produced by the United States Geological Survey
North American Datum of 1983 (NAD83)
World Geodetic System of 1984 (WGS84). Projection and
1 000-meter grid: Universal Transverse Mercator, Zone 16T
10 000-foot ticks: Ohio Coordinate System of 1983 (north zone)
This map is not a legal document. Boundaries may be
generalized for this map scale. Private lands within government
reservations may not be shown. Obtain permission before
entering private lands.
Imagery:.....NAIP, August 2011
Roads:.....©2006-2013 TomTom
Names:.....GNIS, 2013
Hydrography:.....National Hydrography Dataset, 2011
Contours:.....National Elevation Dataset, 2010
Boundaries:.....Census, IBC, USGS, 1972 - 2012
Public Land Survey System:.....BLM, 2013



QUADRANGLE LOCATION

Ayersville	New Bavaria	Hamler
Continental	Miller City	Ottawa
Ottoville	Kalida	Columbus Grove



CONTOUR INTERVAL 5 FEET
NORTH AMERICAN VERTICAL DATUM OF 1988
This map was produced to conform with the
National Geospatial Program US Topo Product Standard, 2011.
A metadata file associated with this product is draft version 0.6.15

MILLER CITY, OH
2013

