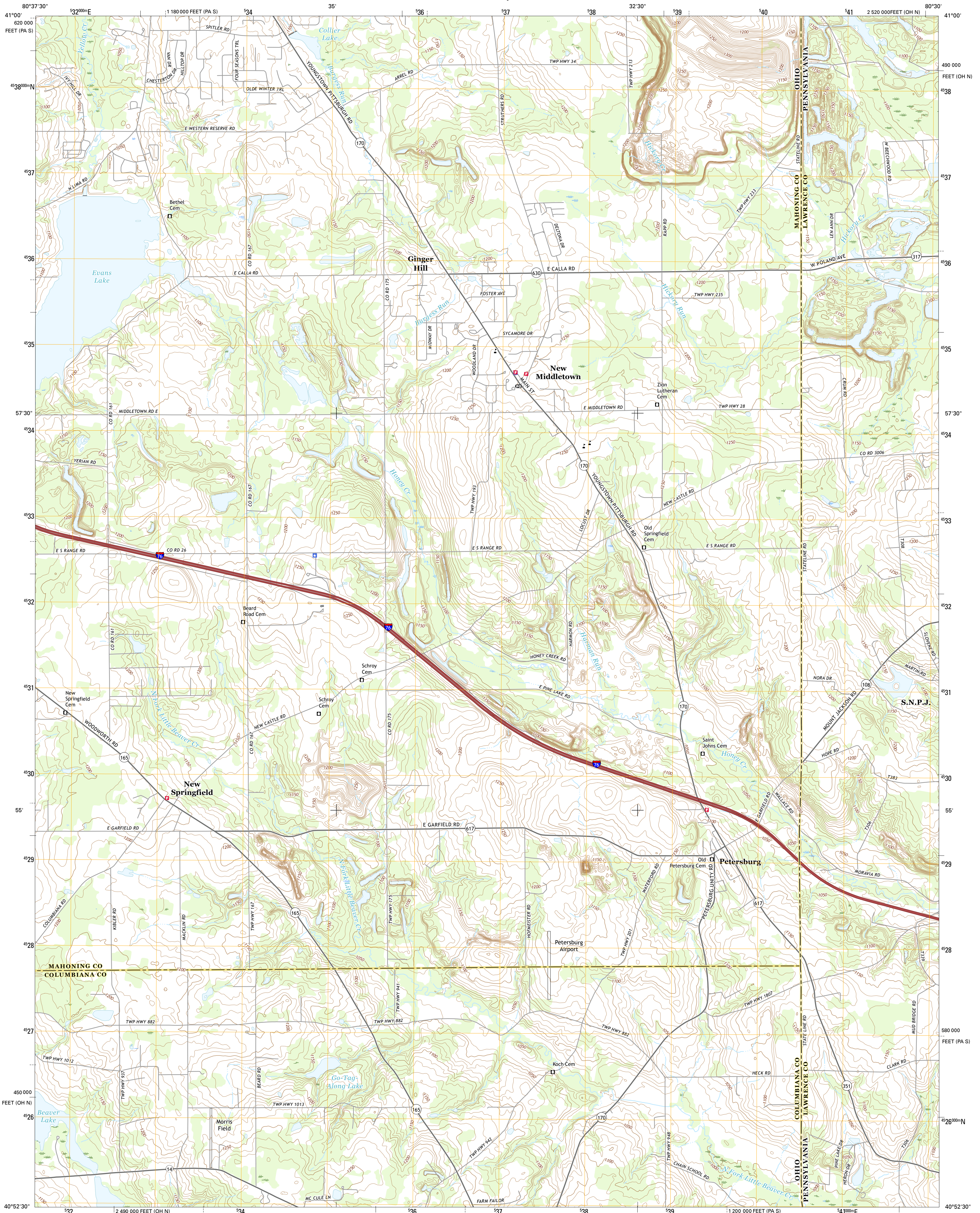




U.S. DEPARTMENT OF THE INTERIOR  
U.S. GEOLOGICAL SURVEY



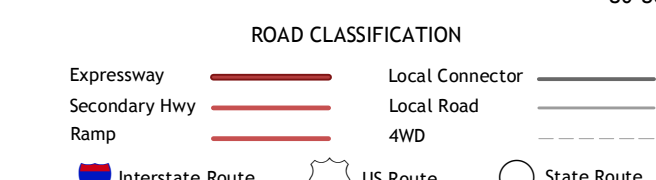
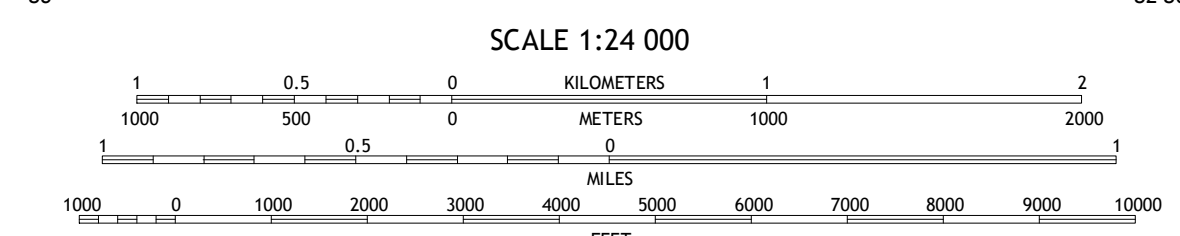
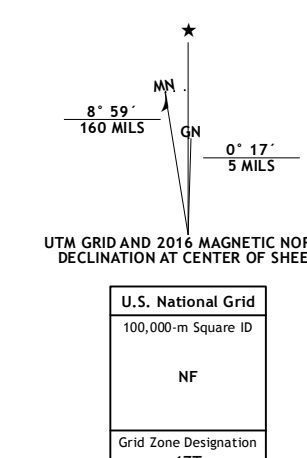
NEW MIDDLETOWN QUADRANGLE  
OHIO-PENNSYLVANIA  
7.5-MINUTE SERIES



**Produced by the United States Geological Survey**  
North American Datum of 1983 (NAD83)  
World Geodetic System of 1984 (WGS84). Projection and  
1 000-meter grid: Universal Transverse Mercator, Zone 17T  
10 000-foot ticks: Ohio Coordinate System of 1983 (north zone),  
Pennsylvania Coordinate System of 1983 (south zone)

This map is not a legal document. Boundaries may be  
generalized for this map scale. Private lands within government  
reservations may not be shown. Obtain permission before  
entering private lands.

Imagery.....N.A.I.P., October 2015  
Roads.....U.S. Census Bureau, 2015  
Names.....GNIS, 2016  
Hydrography.....National Hydrography Dataset, 2015  
Contours.....National Elevation Dataset, 2010  
Boundaries.....Multiple sources; see metadata file 1972-2016  
Public Land Survey System.....BLM, 2013  
Wetlands.....FWS National Wetlands Inventory 1977 - 2014



ADJOINING QUADRANGLES

1	2	3
4	5	6
7	8	

1 Youngstown  
2 Campbell  
3 Edinburg  
4 Columbiana  
5 Bessemer  
6 Elkton  
7 East Palestine  
8 New Gallie

NEW MIDDLETOWN, OH-PA  
2016

