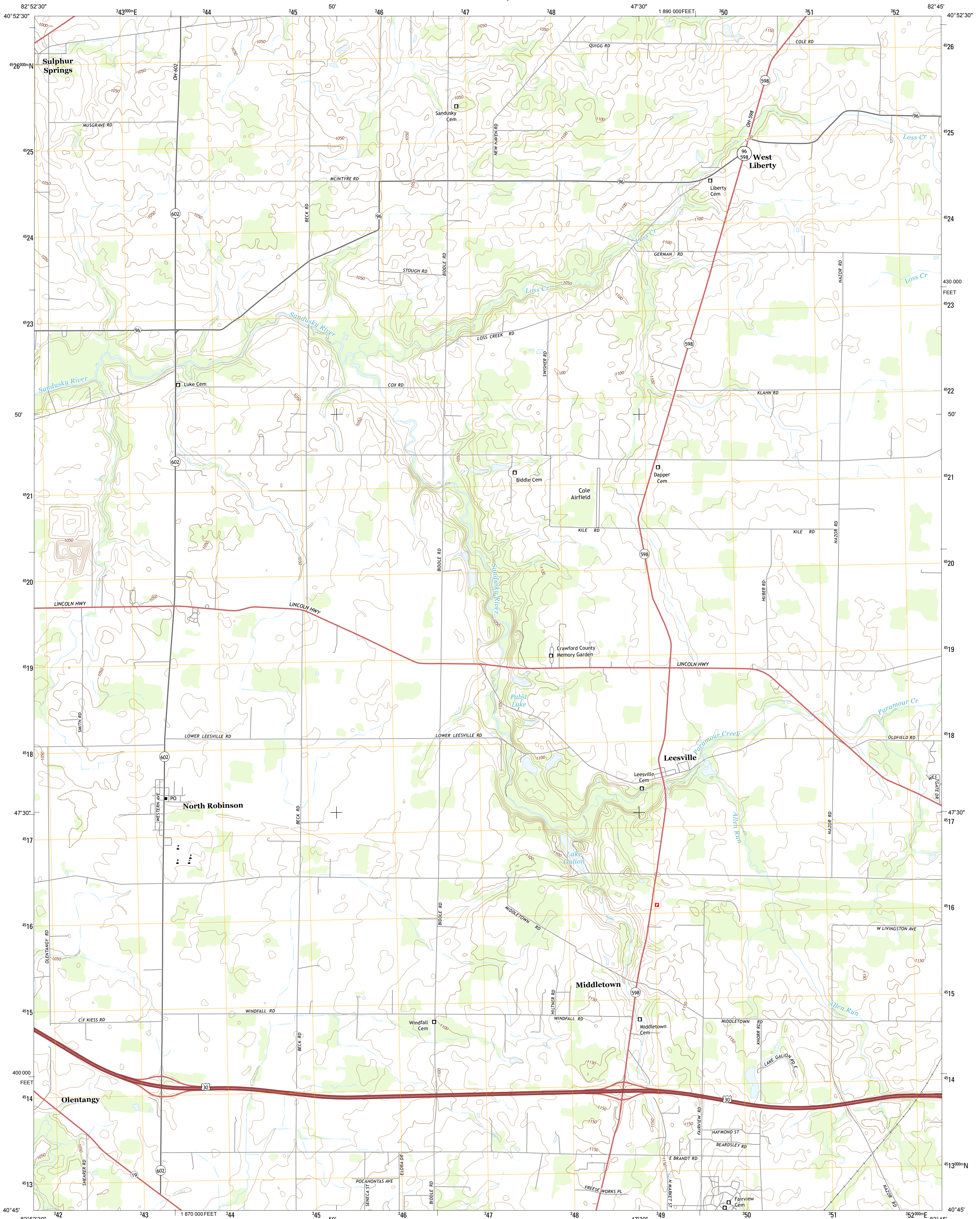




U.S. DEPARTMENT OF THE INTERIOR
U. S. GEOLOGICAL SURVEY

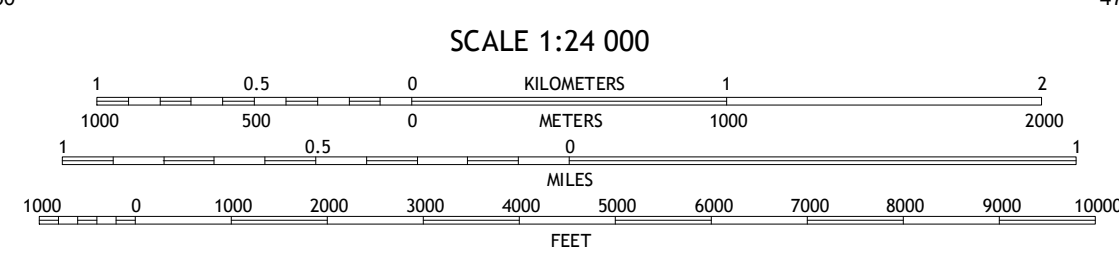
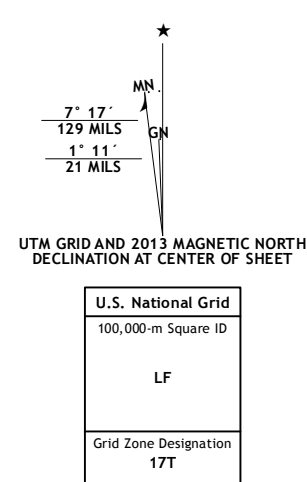


NORTH ROBINSON QUADRANGLE
OHIO-CRAWFORD CO.
7.5-MINUTE SERIES



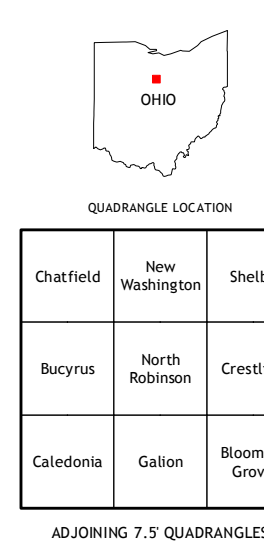
Produced by the United States Geological Survey
North American Datum of 1983 (NAD83)
World Geodetic System of 1984 (WGS84). Projection and
1 000-meter grid: Universal Transverse Mercator, Zone 17T
10 000-foot ticks: Ohio Coordinate System of 1983 (north zone)
This map is not a legal document. Boundaries may be
generalized for this map scale. Private lands within government
reservations may not be shown. Obtain permission before
entering private lands.

Imagery: NAIP, August 2011
Roads: ©2006-2013 TomTom
Names: ©2006-2013 TomTom
Hydrography: National Hydrography Dataset, 2011
Contours: National Elevation Dataset, 2010
Boundaries: Census, IBWC, IBC, USGS, 1972-2012
Public Land Survey System: BLM, 2013



SCALE 1:24 000
CONTOUR INTERVAL 10 FEET
NORTH AMERICAN VERTICAL DATUM OF 1988

This map was produced to conform with the
National Geospatial Program US Topo Product Standard, 2011.
A metadata file associated with this product is draft version 0.6.15



ROAD CLASSIFICATION

Expressway	Local Connector
Secondary Hwy	Local Road
Ramp	4WD
Interstate Route	US Route
	State Route

QUADRANGLE LOCATION

Chatfield	New Washington	Shelby
Bucyrus	North Robinson	Crestline
Caledonia	Gallon	Blooming Grove

NORTH ROBINSON, OH
2013

