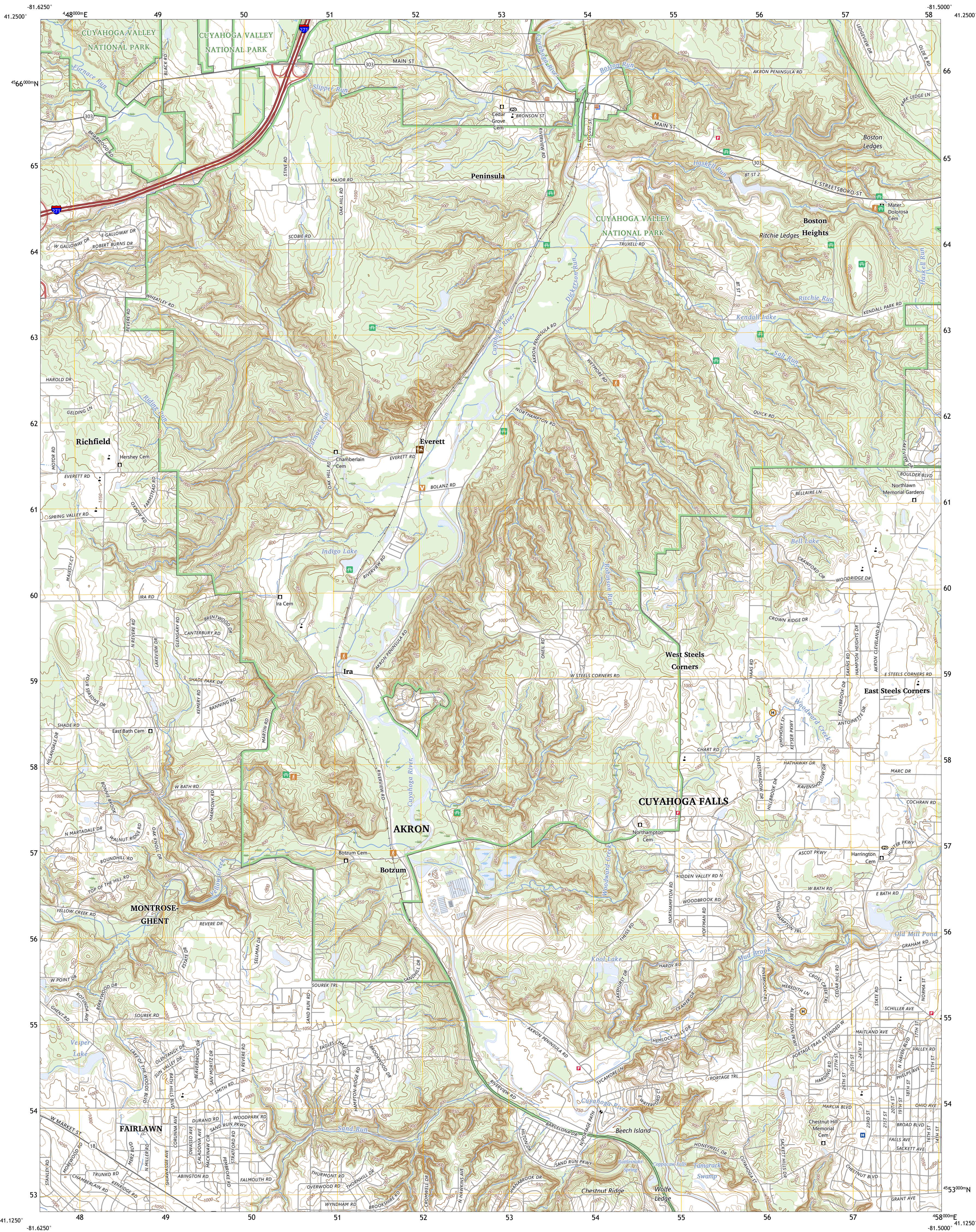




U.S. DEPARTMENT OF THE INTERIOR  
U.S. GEOLOGICAL SURVEY



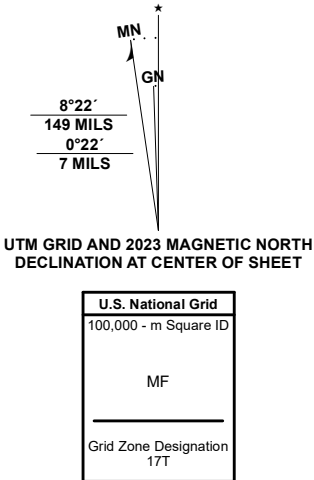
PENINSULA QUADRANGLE  
OHIO - SUMMIT COUNTY  
7.5-MINUTE SERIES



Produced by the United States Geological Survey

North American Datum of 1983 (NAD83)  
World Geodetic System of 1984 (WGS84). Projection and  
1 000-meter grid/Universal Transverse Mercator, Zone 17T  
This map is not a legal document. Boundaries may be  
generalized for this map scale. Private lands within government  
reservations may not be shown. Obtain permission before  
entering private lands.

Imagery.....NAIP, June 2017 - December 2017  
Roads.....U.S. Census Bureau, 2016  
Names.....GNIS, 1979 - 2023  
Hydrography.....National Hydrography Dataset, 2004 - 2022  
Contours.....National Elevation Dataset, 2010  
Boundaries.....Multiple sources; see metadata file 2020 - 2022  
Wetlands.....FWS National Wetlands Inventory 2004 - 2007

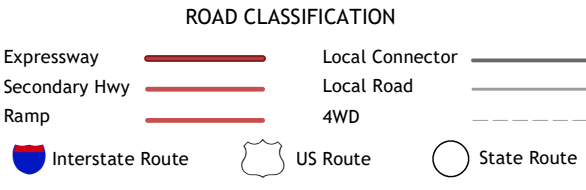


QUADRANGLE LOCATION

1	2	3
4	5	6
7	8	9

ADJOINING QUADRANGLES

1 Broadview Heights  
2 Northfield  
3 Twinsburg  
4 West Richfield  
5 Hudson  
6 Wadsworth  
7 Akron West  
8 Akron East



PENINSULA, OH  
2023



NSN 7 56 43 0 16 3 87 8 83  
NGA REF NO US S X 2 4 K 3 4 7 1 1