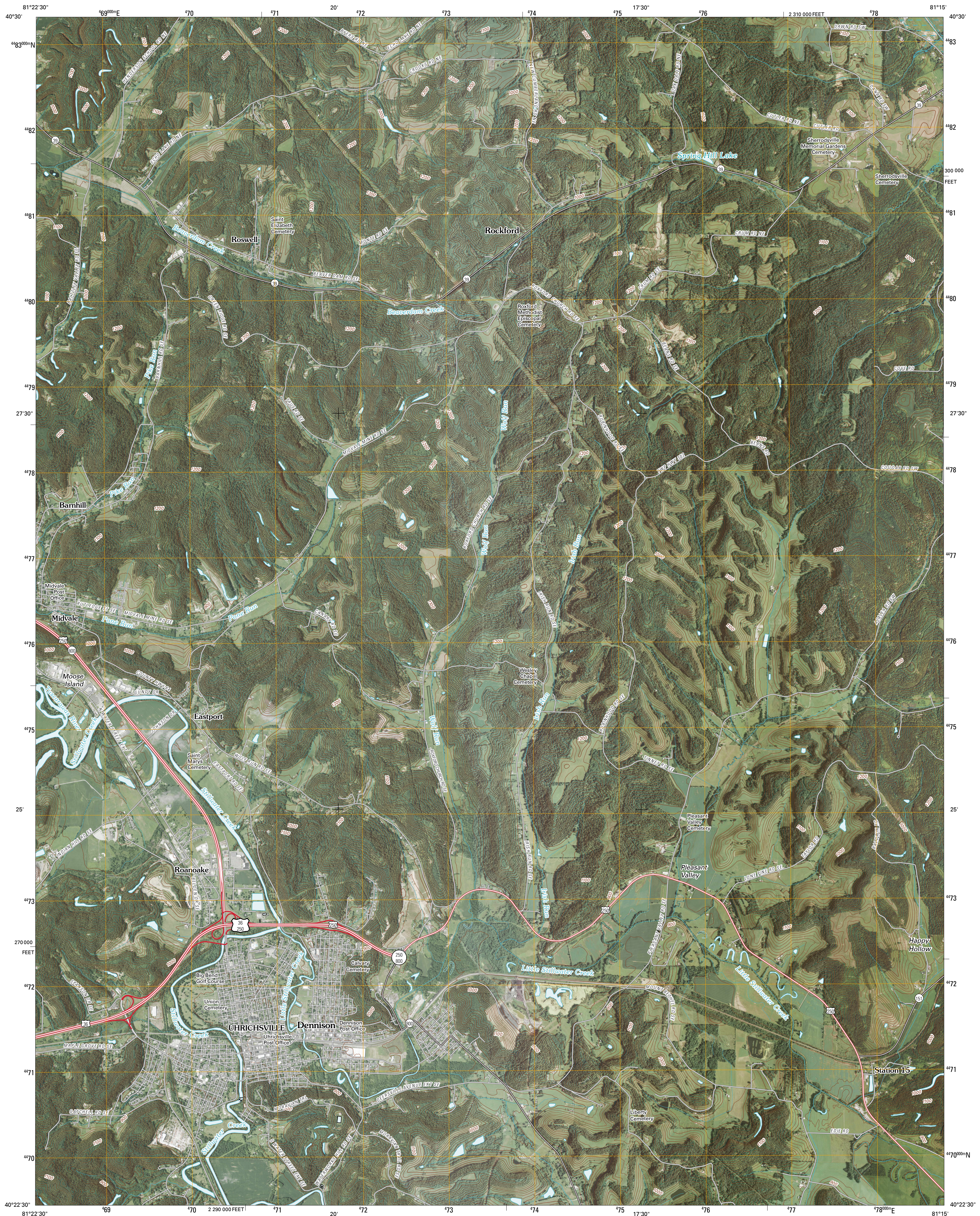




U.S. DEPARTMENT OF THE INTERIOR
U. S. GEOLOGICAL SURVEY

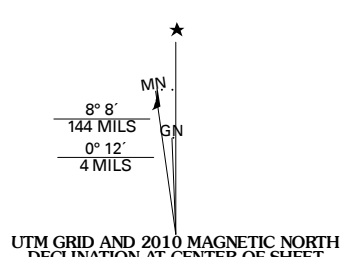


UHRICHSVILLE QUADRANGLE
OHIO
7.5-MINUTE SERIES

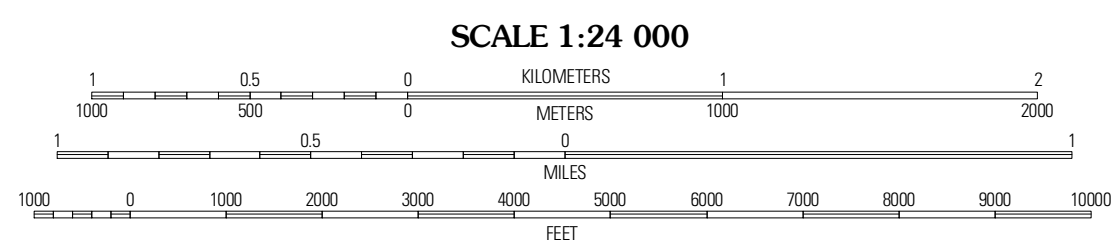


Produced by the United States Geological Survey
North American Datum of 1983 (NAD83)
World Geodetic System of 1984 (WGS84). Projection and
1 000-meter grid: Universal Transverse Mercator, Zone 17T
(10 000-foot ticks: Ohio Coordinate System of 1983
(north zone))

Imagery.....NAP, July 2004
Roads.....©2006-2010 Tele Atlas
Names.....GNIS, 2008
Hydrography.....National Hydrography Dataset, 2004
Contours.....National Elevation Dataset, 2004



U.S. National Grid
100,000 m Square ID
ME
Grid Zone Designation
17T



CONTOUR INTERVAL 20 FEET
NORTH AMERICAN VERTICAL DATUM OF 1988

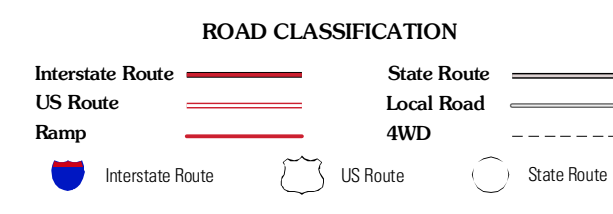
This map was produced to conform with version 0.5.10 of the
draft USGS Standards for 7.5-Minute Quadrangle Maps.
A metadata file associated with this product is draft version 0.5.11



QUADRANGLE LOCATION

Dover	Mineral City	Delroy
New Philadelphia	Uhrichsville	Bowerson
Gradesbuttes	Tippecanoe	Doersville

ADJOINING 7.5 QUADRANGLES



UHRICHSVILLE, OH
2010