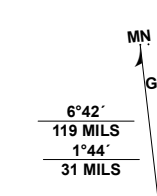


Produced by the United States Geological Survey

North American Datum of 1983 (NAD83) World Geodetic System of 1984 (WGS84) Projection and 1 000-meter grid/Universal Transverse Mercator, Zone 17T/17S This map is not a legal document. Boundaries may be generalized for this map scale. Private lands within government reservations may not be shown. Obtain permission before entering private lands.

Imagery: NAIP, August 2015 - October 2015  
Roads: U.S. Census Bureau, 2016  
Names: GNS, 1979-2019  
Hydrography: National Hydrography Dataset, 1989 - 2018  
Contours: National Elevation Dataset, 2010  
Boundaries: Multiple sources; see metadata file, 2017 - 2018  
Public Land Survey System: BLM, 2017  
Wetlands: FWS National Wetlands Inventory 2004 - 2007



UTM GRID AND 2019 MAGNETIC NORTH DECLINATION AT CENTER OF SHEET

Table with 2 columns: UTM Grid Zone Designation (17T) and Magnetic Declination (175°N).



SCALE 1:24 000

CONTOUR INTERVAL 10 FEET NORTH AMERICAN VERTICAL DATUM OF 1988

This map was produced to conform with the National Geospatial Program US Topo Product Standard, 2011. A metadata file associated with this product is draft version 0.6.18



QUADRANGLE LOCATION

3x3 grid of adjacent quadrangles with numbers 1-8. The center quadrangle (4) is highlighted in red.

- 1 Northville
- 2 Kingscreek
- 3 North Lewisburg
- 4 Urbana West
- 5 Mechanicsburg
- 6 Springfield
- 7 New Moorefield
- 8 South Vienna

ROAD CLASSIFICATION legend table with symbols for Expressway, Secondary Hwy, Ramp, Interstate Route, Local Connector, Local Road, 4WD, US Route, and State Route.

